

VORTAC RBL <b>115.7</b> Chan <b>104</b>	APP CRS <b>328°</b>	Rwy Idg <b>5431</b> TDZE <b>352</b> Apt Elev <b>352</b>
---	------------------------	---

**VOR RWY 33**  
RED BLUFF MUNI (RBL)

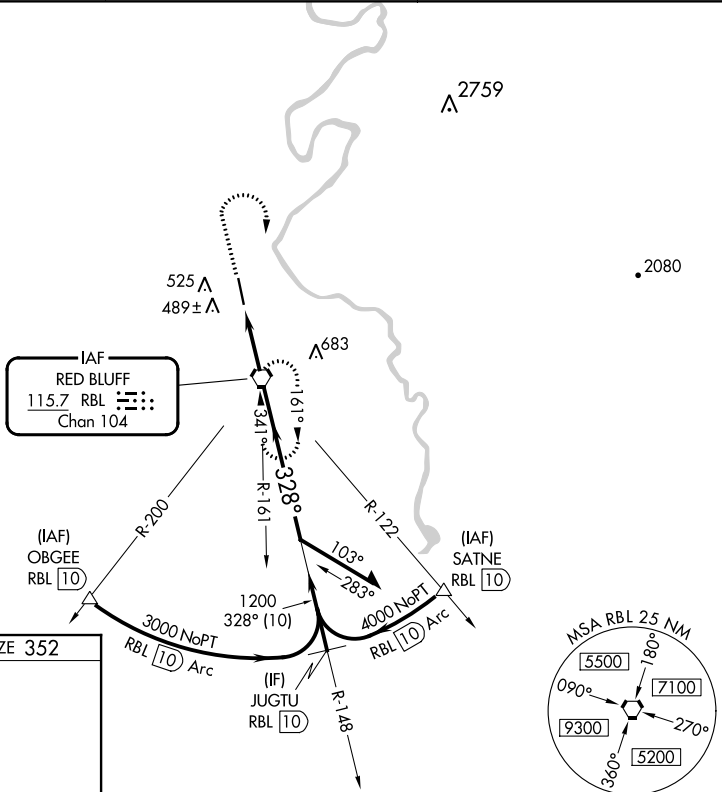
**⚠** When local altimeter setting not received, use Redding altimeter setting and increase all MDAs 80 feet and all Cat C/D visibilities ¼ SM.

MISSED APPROACH: Climb to 1500, then climbing right turn to 2000 direct RBL VORTAC and hold.

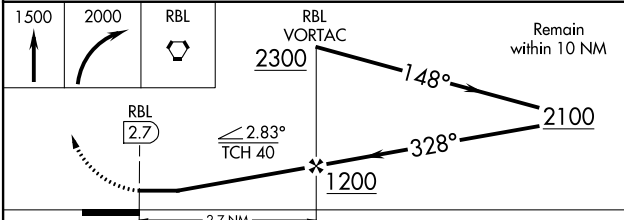
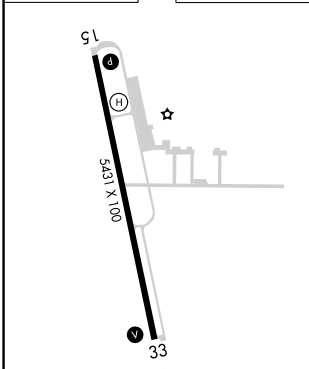
ASOS  
**120.775**

OAKLAND CENTER  
**132.2 350.3**

UNICOM  
**123.0 (CTAF) 0**



ELEV 352 TDZE 352



MIRL Rwy 15-33  
REIL Rwys 15 and 33

FAF to MAP 2.7 NM

Knots	60	90	120	150	180
Min:Sec	2:42	1:48	1:21	1:05	0:54

CATEGORY	A	B	C	D
S-33	740-1 388 (400-1)			740-1¼ 388 (400-1¼)
<b>C</b> CIRCLING	880-1 528 (600-1)		900-1½ 548 (600-1½)	1060-2¼ 708 (800-2¼)

SW-2, 28 NOV 2024 to 26 DEC 2024

SW-2, 28 NOV 2024 to 26 DEC 2024