

APP CRS	Rwy Idg	<b>7038</b>
<b>046°</b>	TDZE	<b>3075</b>
	Apt Elev	<b>3082</b>

# RNAV (RNP) Z RWY 5

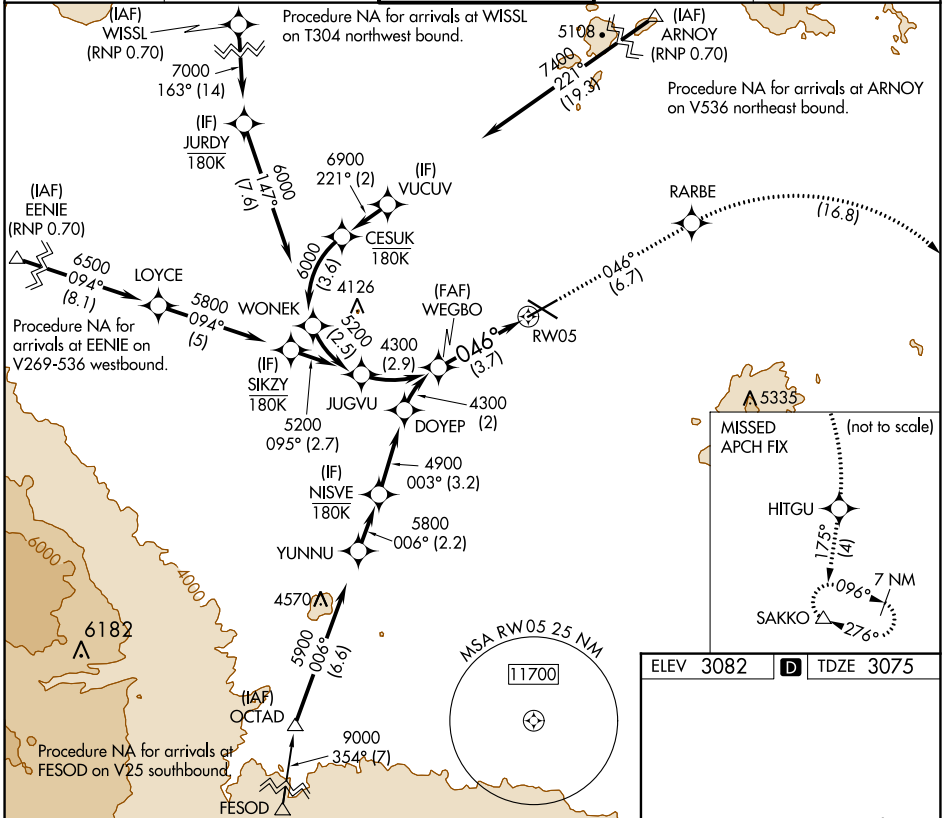
ROBERTS FLD (RDM)

RNP AR APCH. RF required.

MISSED APPROACH: Climb to 9500 on track 046° to RARBE right turn to HITGU and on track 175° to SAKKO and hold, continue climb-in-hold to 9500.

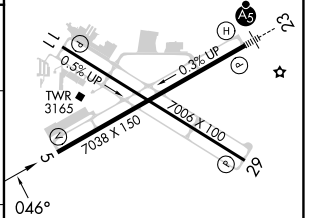
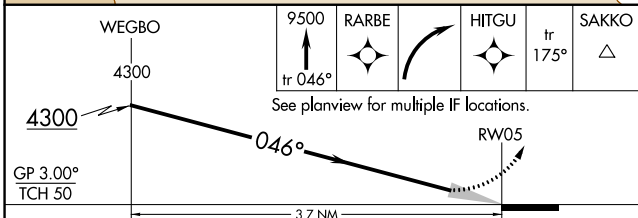
For uncompensated Baro-VNAV systems, procedure NA below -17°C or above 53°C.

ATIS <b>119.025</b>	SEATTLE CENTER <b>126.15 269.475</b>	REDMOND TOWER* <b>124.5 (CTAF) 0 256.8</b>	GND CON <b>121.8</b>	UNICOM <b>122.95</b>
------------------------	---	---	-------------------------	-------------------------



NW-1, 28 NOV 2024 to 26 DEC 2024

NW-1, 28 NOV 2024 to 26 DEC 2024



CATEGORY	A	B	C	D
RNP 0.10 DA		3351-7/8	276 (300-7/8)	
RNP 0.30 DA		3574-1 1/8	499 (500-1 1/8)	

## AUTHORIZATION REQUIRED

REIL Rwy 5, 11, and 29

HIRL Rwy 5-23

MIRL Rwy 11-29