

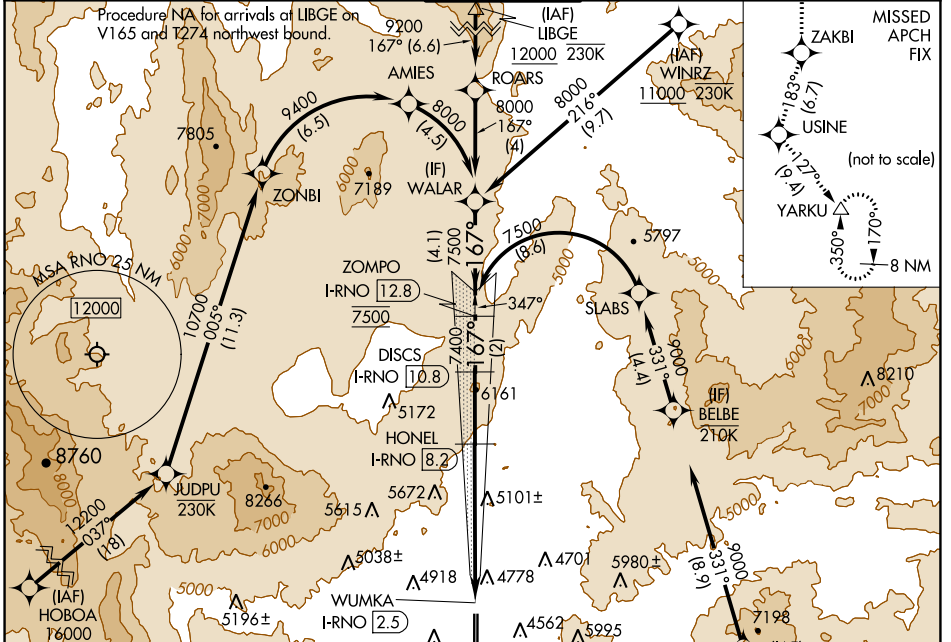
LOC/DME I-RNO <b>110.9</b> Chan <b>46</b>	APP CRS <b>167°</b>	Rwy Idg <b>10011</b> TDZE <b>4415</b> Apt Elev <b>4415</b>
---	------------------------	--

# ILS Z or LOC Z RWY 17R

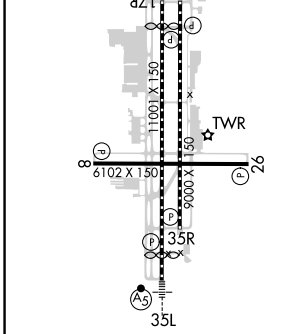
RENO/TAHOE INTL (RNO)

DME required. RNP APCH - GPS. From HOBOA or KLOCK: RF		MALS R	MISSED APPROACH: Climb to 13000 on the RNAV missed approach route to YARKU and hold, continue climb-in-hold to 13000. *Missed approach requires minimum climb of 390 feet per NM to 8000.
⚠ Circling Rwy 8 NA at night. # For inop ALS, increase S-ILS 17R all Cats visibility to 2 SM. ❄ -13°C *RVR 1800 authorized with use of FD or AP or HUD to DA.			

D-ATIS <b>135.8 363.0</b>	NORCAL APP CON <b>119.2 279.55</b>	RENO TOWER <b>118.7 257.8</b>	GND CON <b>121.9 348.6</b>	CLNC DEL <b>124.9 370.85</b>	CPDLC
------------------------------	---------------------------------------	----------------------------------	-------------------------------	---------------------------------	-------



ELEV <b>4415</b>	<b>D</b>	TDZE <b>4415</b>
------------------	----------	------------------



13000	ZAKBI	tr 183°	USINE	tr 127°	YARKU	VGSI and ILS glidepath not coincident (VGSI Angle 3.06/TCH 77).
See planview for multiple IF locations.						DISCS I-RNO [10.8]
						ZOMPO I-RNO [12.8]
						WALAR
						HONEL I-RNO [8.2]
						7400
						WUMKA I-RNO [2.5]
						4.7
						6540
						7400
						8000
						GS 3.10°
						TCH 59

CATEGORY	A	B	C	D
S-ILS 17R*		4615/24	200 (200-1/2)	
S-ILS 17R#		5138-1 5/8	723 (800-1%)	
S-LOC 17R	5420/40 1005 (1100-3/4)	5420/55 1005 (1100-1)	5420-2 1/2	1005 (1100-2 1/2)
<b>C</b> CIRCLING	5420-1 1/4 1005 (1100-1 1/4)	5420-1 1/2 1005 (1100-1 1/2)	6480-3	2065 (2100-3)

MIRL Rwy 8-26  
REIL Rwy 8, 17L, 26, and 35R  
HIRL Rwy 17R-35L and 17L-35R

SW-4, 28 NOV 2024 to 26 DEC 2024

SW-4, 28 NOV 2024 to 26 DEC 2024