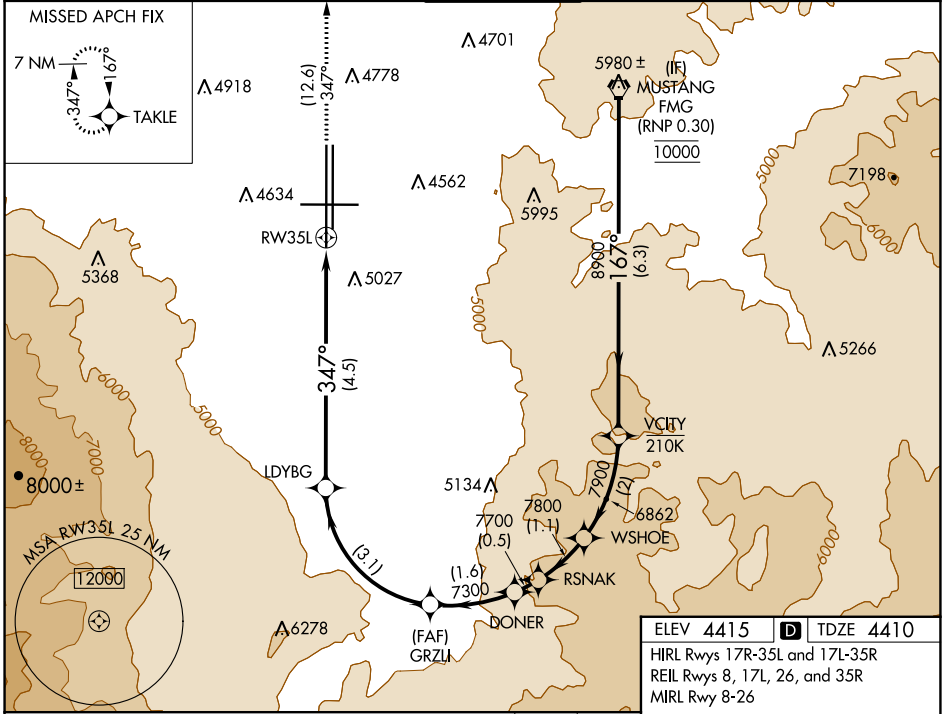


RNAV (RNP) W RWY 35L

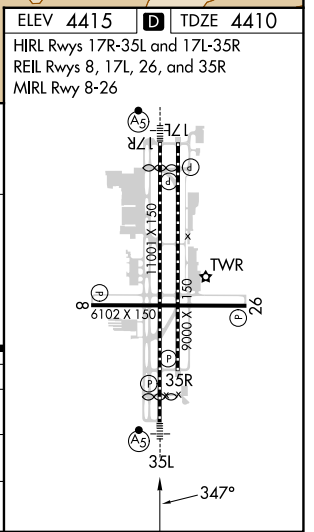
RENO/TAHOE INTL (RNO)

APP CRS 347°	Rwy Idg 10011
	TDZE 4410
	Apt Elev 4415

RNP AR APCH - GPS.		MALSR	MISSED APPROACH: Climb to 11000 on track 347° to TAKLE and hold, continue climb-in-hold to 11000. *Missed approach requires minimum climb of 300 feet per NM to 7140.					
<p>For uncompensated Baro-VNAV systems, procedure NA below -9°C or above 35°C.</p> <p>-13°C</p>			D-ATIS	NORCAL APP CON	RENO TOWER	GND CON	CLNC DEL	CPDLC
			135.8 363.0	119.2 279.55 126.3 353.9	118.7 257.8	121.9 348.6	124.9 370.85	



FMG VORTAC	VCITY	WSHOE	RSNAK	DONER	GRZLI	LDYBG	RW35L
10000	7900	7800	7700	7300	6155		
GP 3.50° TCH 72							
	6.3 NM	2 NM	1.1 NM	0.5 NM	1.6 NM	3.1 NM	4.5 NM
CATEGORY	A		B		C		D
RNP 0.10 DA*			4736-1/2		326 (400-1/2)		
RNP 0.30 DA			5349-2		939 (1000-2)		
AUTHORIZATION REQUIRED							



SW-4, 28 NOV 2024 to 26 DEC 2024

SW-4, 28 NOV 2024 to 26 DEC 2024