

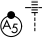
RNAV (RNP) Z RWY 17R

RENO/TAHOE INTL (RNO)

APP CRS	Rwy Idg	10001
167°	TDZE	4415
	Apt Elev	4415

RNP AR APCH - GPS.

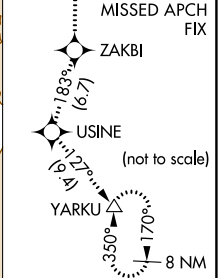
▼ For uncompensated Baro-VNAV systems, procedure NA below -9°C or above 54°C. For inop ALS, increase RNP 0.30 DA visibility all Cats to 1½ SM.

MALSR 

MISSED APPROACH: Climb to 3000 on track 167° to ZAKBI and on track 183° to USINE and on track 127° to YARKU and hold, continue climb-in-hold to 13000.

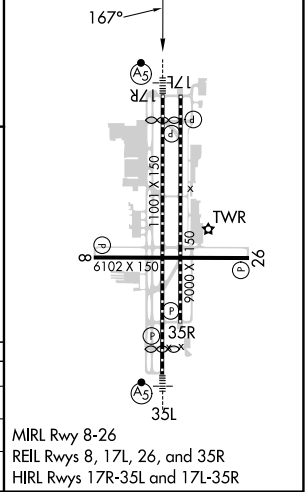
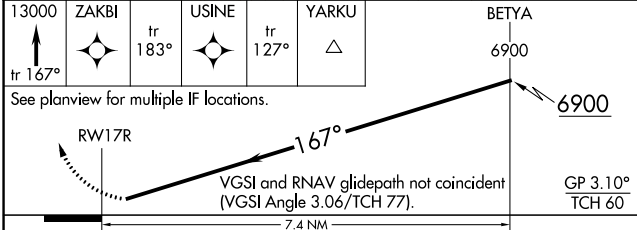
*Missed approach requires minimum climb of 266 feet per NM to 7240.

D-ATIS	NORCAL APP CON	RENO TOWER	GND CON	CLNC DEL	CPDLC
135.8 363.0	119.2 279.55 126.3 353.9	118.7 257.8	121.9 348.6	124.9 370.85	



13000	ZAKBI	USINE	YARKU	BETYA
↑		tr 183°		tr 127°
tr 167°				

ELEV 4415	TDZE 4415
-----------	-----------



CATEGORY	A	B	C	D
RNP 0.10 DA*		4754/26	339 (400-½)	
RNP 0.30 DA		5092-1½	677 (700-½)	

AUTHORIZATION REQUIRED

SW-4, 28 NOV 2024 to 26 DEC 2024

SW-4, 28 NOV 2024 to 26 DEC 2024