

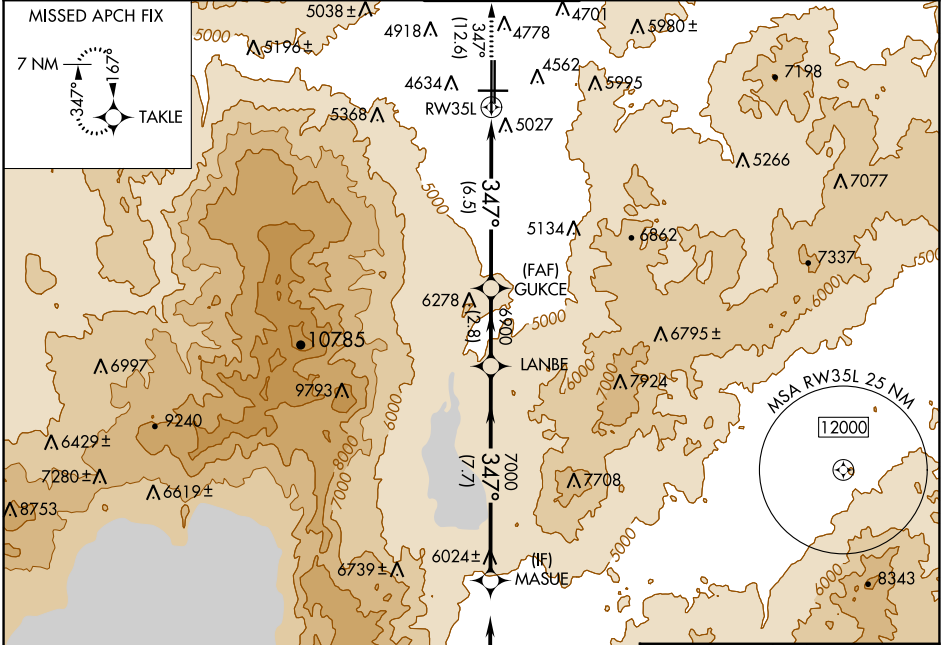
RNAV (RNP) Z RWY 35L

RENO/TAHOE INTL (RNO)

APP CRS	Rwy Idg	10011
347°	TDZE	4410
	Apt Elev	4415

RNP AR APCH - GPS.		MALSR	MISSED APPROACH: Climb to 11000 on track 347° to TAKLE and hold, continue climb-in-hold to 11000. *Missed approach requires minimum climb of 300 feet per NM to 7140.		

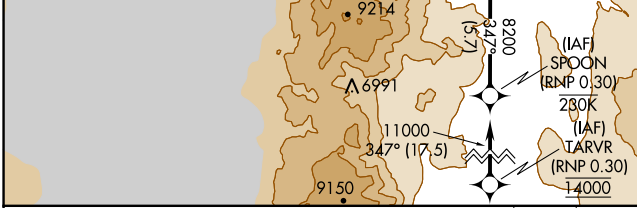
D-ATIS	NORCAL APP CON		RENO TOWER	GND CON	CLNC DEL	CPDLC
135.8 363.0	119.2 279.55	126.3 353.9	118.7 257.8	121.9 348.6	124.9 370.85	



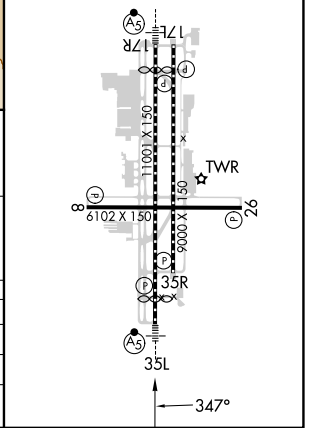
SW-4, 28 NOV 2024 to 26 DEC 2024

SW-4, 28 NOV 2024 to 26 DEC 2024

ELEV 4415		TDZE 4410
REIL Rwy 8, 17L, 26, and 35R		
HIRL Rwy 17R-35L and 17L-35R		
MIRL Rwy 8-26		



MASUE	LANBE	GUKCE	11000	TAKLE
8200		6900		
GP 3.50°				
TCH 72				
7.7 NM	2.8 NM	6.5 NM		



CATEGORY	A	B	C	D
RNP 0.10 DA*		4736-1/2	326 (400-1/2)	
RNP 0.30 DA		5349-2	939 (1000-2)	

AUTHORIZATION REQUIRED