

WAAS CH 40409 W35B	APP CRS 347°	Rwy Idg TDZE 4408 Apt Elev 4415
--	------------------------	---

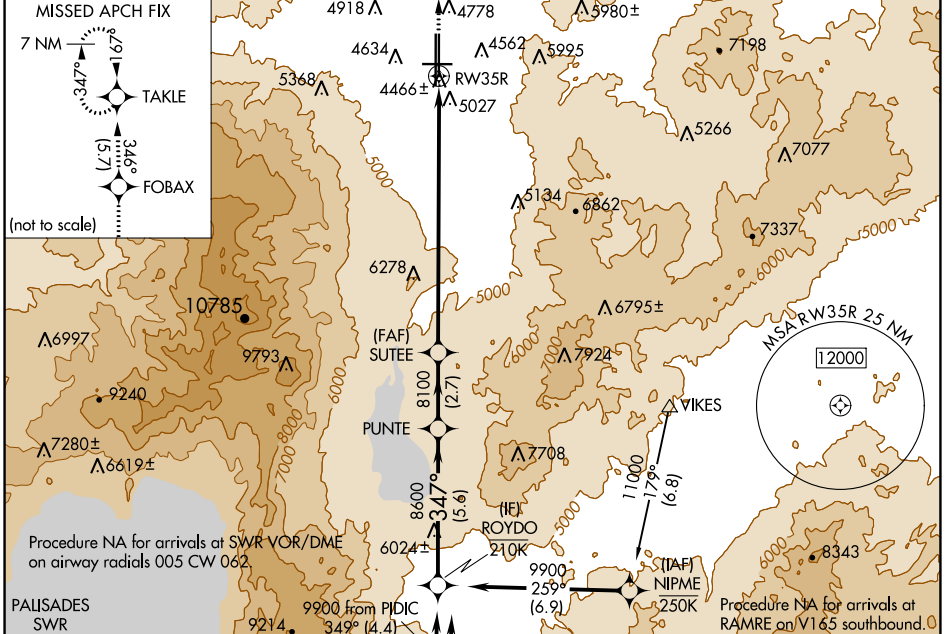
RNAV (GPS) Y RWY 35R

RENO/TAHOE INTL (RNO)

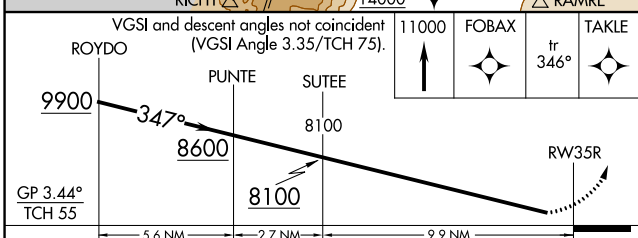
RNP APCH - GPS.			
Rwy 35R helicopter visibility reduction below 3/4 SM NA. -13°C			

MISSED APPROACH: Climb to 11000 direct FOBAX and on track 346° to TAKLE and hold, continue climb-in-hold to 11000.
 *Missed approach requires minimum climb of 250 feet per NM to 6100.

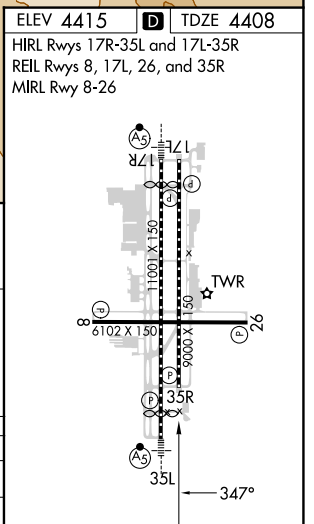
D-ATIS 135.8 363.0	NORCAL APP CON 119.2 279.55 126.3 353.9	RENO TOWER 118.7 257.8	GND CON 121.9 348.6	CLNC DEL 124.9 370.85	CPDLC
------------------------------	---	----------------------------------	-------------------------------	---------------------------------	-------



PAISADES SWR	ZAPTU	PUNTE	ROYDO	SPOON	RAMRE
11800 (091) (16.8)	11500 to PIDIC (047) (11.3)	11500 to PIDIC (077) (7)	11500 to PIDIC (349) (4.4)	9900 from SPOON (349) (4.6)	9900 to ROYDO (324) (9.9)



CATEGORY	A	B	C	D
LPV DA*		4780-1	372 (400-1)	
LPV DA		5379-3	971 (1000-3)	



SW-4, 28 NOV 2024 to 26 DEC 2024

SW-4, 28 NOV 2024 to 26 DEC 2024