

LOC I-EZD <b>110.9</b>	APP CRS <b>023°</b>	Rwy Idg TDZE Apt Elev	<b>6607</b> <b>161</b> <b>168</b>
---------------------------	------------------------	-----------------------------	---

## ILS or LOC RWY 2

RICHMOND INTL (RIC)

**▼** Rwy 2 helicopter visibility reduction below ¾ SM NA.  
For inop ALS, increase S-ILS 2 all Cats visibility  
to ½ SM and S-LOC 2 Cats A and B visibility to 1 SM.

MALSR



**MISSED APPROACH:** Climb to 2000 on RIC VORTAC R-018 to EPICS INT/RIC 17.3 DME and hold.

**ATIS**  
**119.15 263.025**


**POTOMAC APP CON**  
**126.4 282.375** (001°-185°)  
**126.75 307.2** (186°-360°)

**RICHMOND TOWER**  
**121.1 257.8**

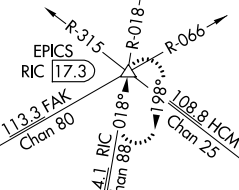
**GND CON**  
**121.9 348.6**

**CLNC DEL**  
**127.55 348.6**

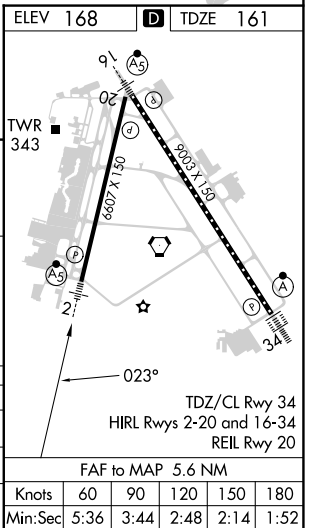
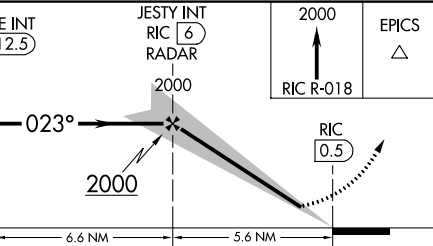
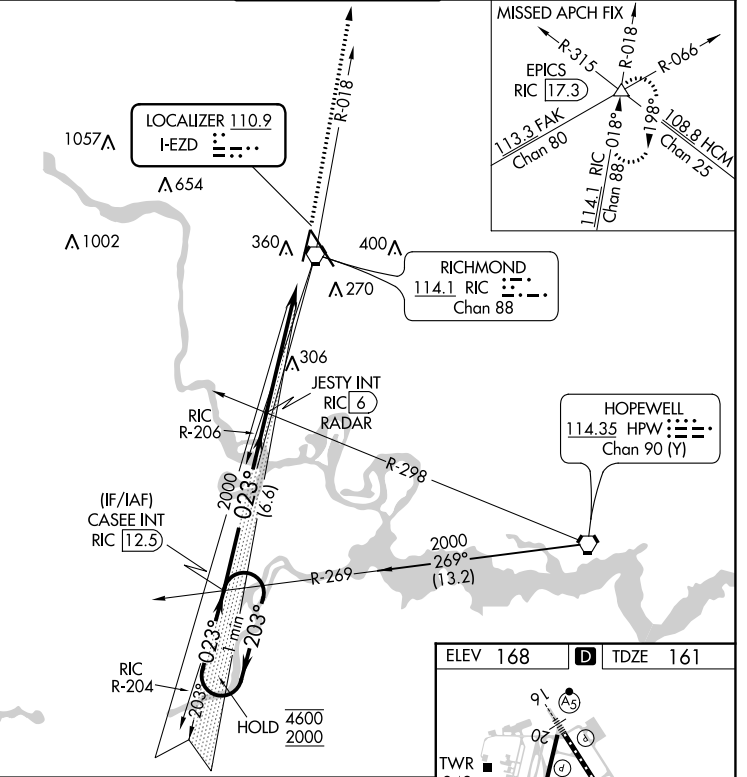
ALTERNATIVE  
MISSED APCH FIX  
**HOPEWELL HPW** 114.35 Chan 90 (Y)  
183°  
003° R-183



MISSED APCH FIX  
R-315  
R-018  
R-066  
108 & HCM Chan 25  
113.3 FAK Chan 80  
114.1 RIC Chan 88  
190°



1587  
1002  
360  
400  
270  
306  
RICHMOND 114.1 RIC Chan 88  
R-206  
R-298  
R-269  
2000 269 (13.2)  
R-204  
203  
203°  
203°  
1 min HOLD  
4600  
2000  
MSA RIC 25 NM  
2600  
2000  
180°  
360°



CATEGORY	A	B	C	D
S-ILS 2	457-¾ 296 (300-¾)			
S-LOC 2	560-¾ 399 (400-¾)			
<b>C</b> CIRCLING	660-1 492 (500-1)	700-1½ 532 (600-1½)	720-2 552 (600-2)	