

TOP ALTITUDE:  
5000

(READE7, READE)  
READE SEVEN DEPARTURE

241.09

AL-347 (FAA)

RICHMOND INTL (RIC)  
RICHMOND, VIRGINIA

ATIS 119.15 263.025  
CLNC DEL  
127.55 348.6  
GND CON  
121.9 348.6  
RICHMOND TOWER  
121.1 257.8  
POTOMAC DEP CON  
126.75 307.2

GORDONSVILLE  
115.6 GVE :···  
Chan 103

MONTEBELLO  
115.3 MOL :···  
Chan 100

FLAT ROCK  
113.3 FAK :···  
Chan 80

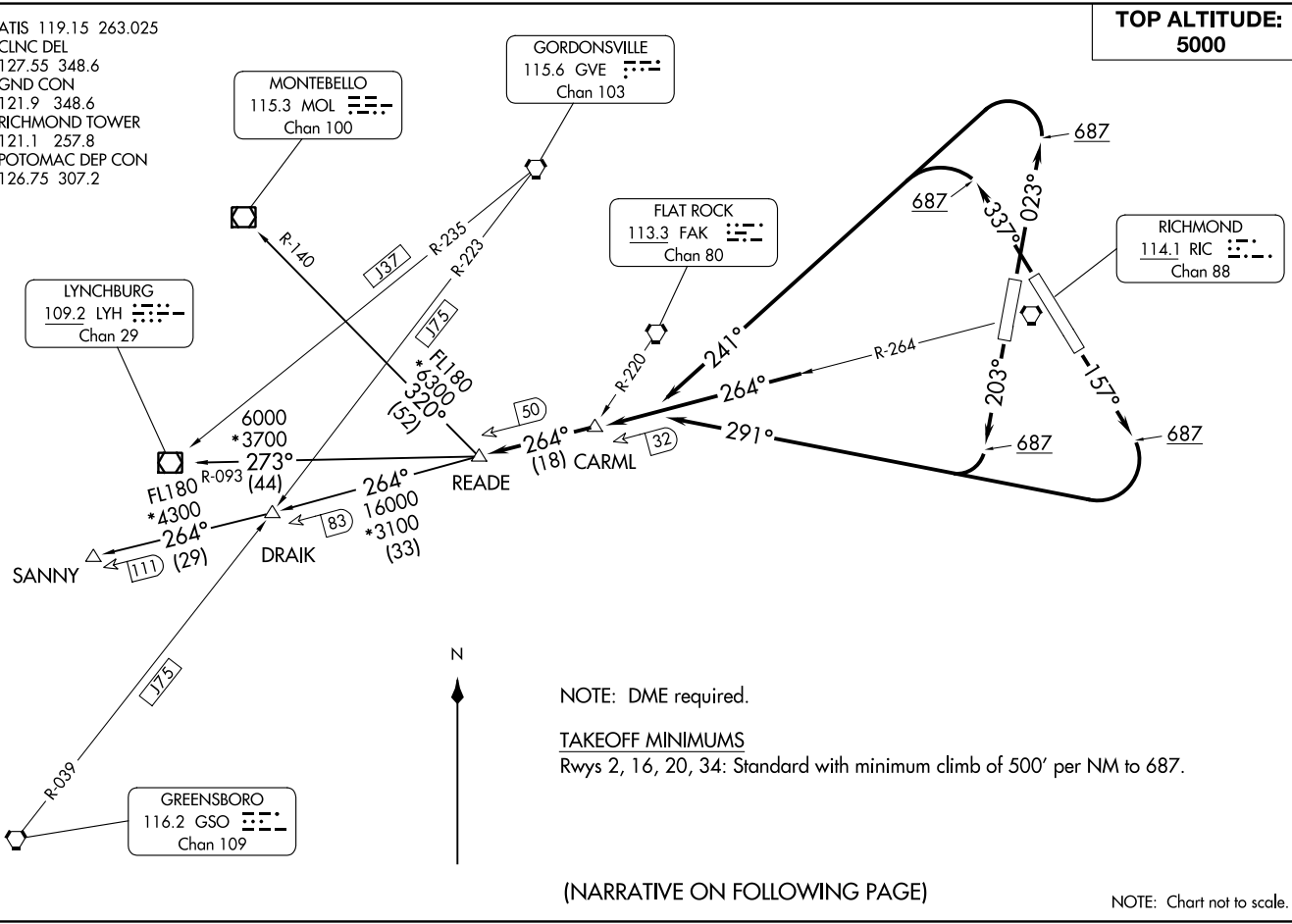
RICHMOND  
114.1 RIC :···  
Chan 88

LYNCHBURG  
109.2 LYH :···  
Chan 29

GREENSBORO  
116.2 GSO :···  
Chan 109

READE SEVEN DEPARTURE  
(READE7, READE) 05DEC19

RICHMOND, VIRGINIA  
RICHMOND INTL (RIC)



NOTE: DME required.

TAKEOFF MINIMUMS

Rwys 2, 16, 20, 34: Standard with minimum climb of 500' per NM to 687.

(NARRATIVE ON FOLLOWING PAGE)

NOTE: Chart not to scale.

# READE SEVEN DEPARTURE



## DEPARTURE ROUTE DESCRIPTION

TAKEOFF RUNWAY 2: Climb heading 023° to 687, then climbing left turn heading 241°, thence . . . .

TAKEOFF RUNWAY 16: Climb heading 157° to 687, then climbing right turn heading 291°, thence . . . .

TAKEOFF RUNWAY 20: Climb heading 203° to 687, then climbing right turn heading 291°, thence . . . .

TAKEOFF RUNWAY 34: Climb heading 337° to 687, then climbing left turn heading 241°, thence . . . .

. . . . intercept RIC VORTAC R-264 to CARML INT/RIC 32 DME, then on RIC VORTAC R-264 to READE INT/RIC 50 DME, then on assigned transition, maintain 5000. Expect filed altitude within ten minutes after departure.

DRAIK TRANSITION (READE7.DRAIK): From over READE INT/RIC 50 DME on RIC R-264 to DRAIK INT.

LYNCHBURG TRANSITION (READE7.LYH): From over READE INT/RIC 50 DME on LYH R-093 to LYH VOR/DME.

MONTEBELLO TRANSITION (READE7.MOL): From over READE INT/RIC 50 DME on MOL R-140 to MOL VOR/DME.

SANNY TRANSITION (READE7.SANNY): From over READE INT/RIC 50 DME on RIC R-264 to SANNY.

NE-3, 28 NOV 2024 to 26 DEC 2024

NE-3, 28 NOV 2024 to 26 DEC 2024