

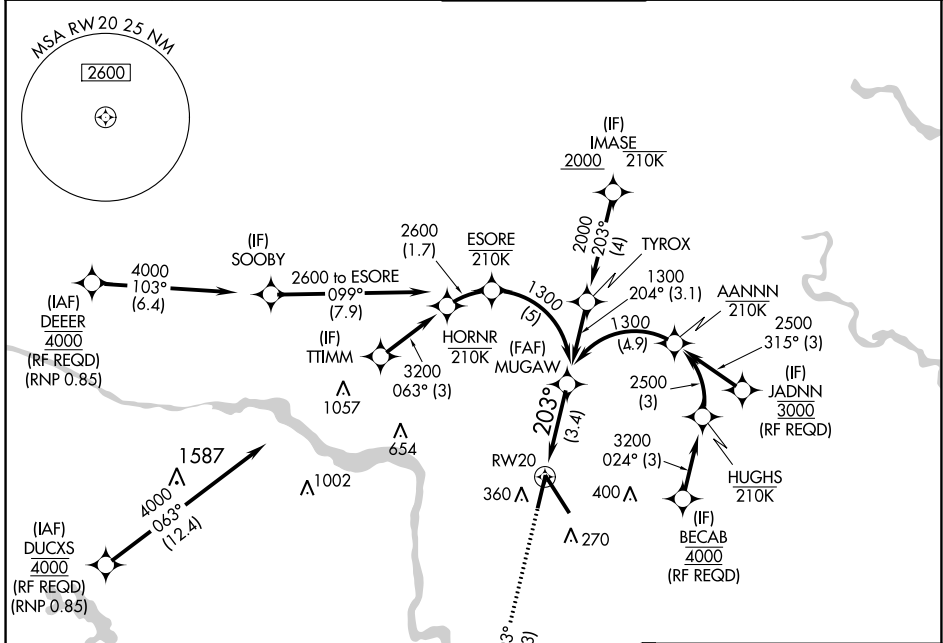
APP CRS	Rwy Idg	6607
203°	TDZE	168
	Apt Elev	168

RNAV (RNP) Y RWY 20

RICHMOND INTL (RIC)

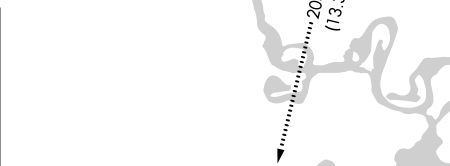
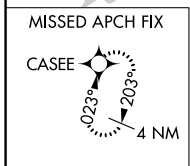
RNP AR APCH.	MISSED APPROACH: Climb to 2000 on track 203° CASEE and hold.
▼ For uncompensated Baro-VNAV systems, procedure NA below -11°C or above 54°C.	

ATIS	POTOMAC APP CON	RICHMOND TOWER	GND CON	CLNC DEL
119.15 263.025	126.4 282.375 (001°-185°) 126.75 307.2 (186°-360°)	121.1 257.8	121.9 348.6	127.55 348.6

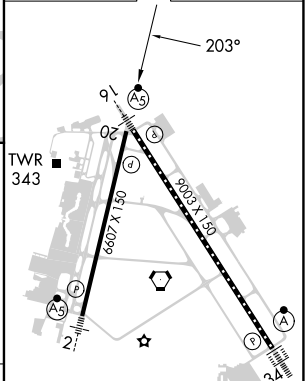


NE-3, 28 NOV 2024 to 26 DEC 2024

NE-3, 28 NOV 2024 to 26 DEC 2024



ELEV 168	D TDZE 168
----------	-------------------



2000	CASEE	See planview for multiple IF locations.
↑	✧	
tr 203°		



CATEGORY	A	B	C	D
RNP 0.11 DA		505-1	337 (400-1)	
RNP 0.30 DA		613-1½	445 (500-1½)	

AUTHORIZATION REQUIRED

TDZ/CL Rwy 34
HIRL Rwy 2-20 and 16-34
REIL Rwy 20