

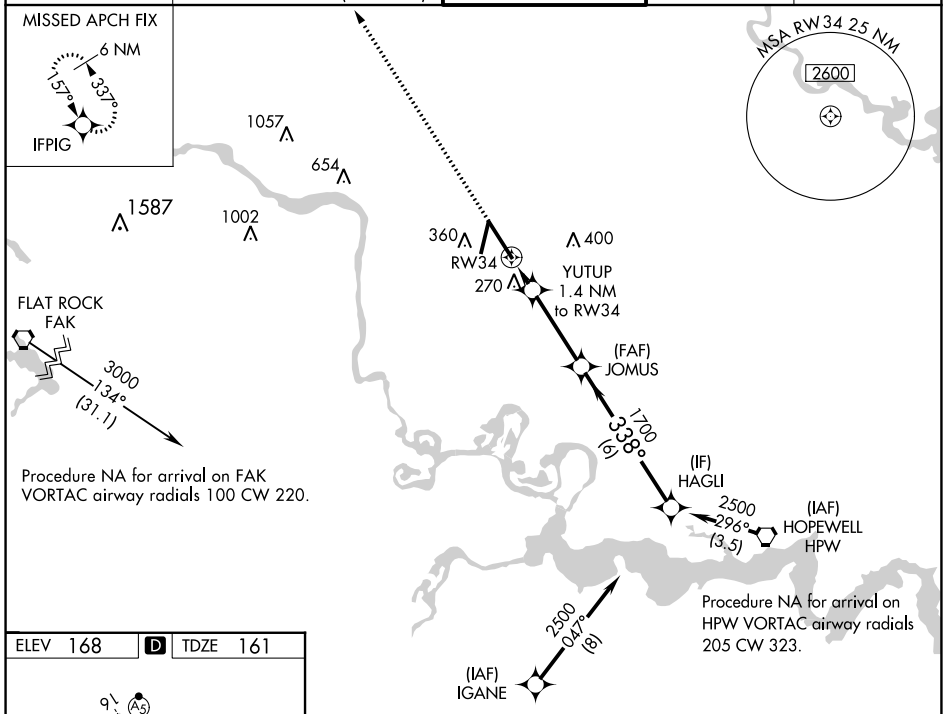
WAAS CH <b>97520</b> <b>W34A</b>	APP CRS <b>338°</b>	Rwy Idg <b>9003</b> TDZE <b>161</b> Apt Elev <b>168</b>
--	------------------------	---

# RNAV (GPS) Z RWY 34

RICHMOND INTL (RIC)

RNP APCH.	ALSF-2 	MISSED APPROACH: Climb to 2500 direct IFPIG and hold.
<p><b>▼</b> For uncompensated Baro-VNAV systems, LNAV/VNAV NA below -11°C or above 54°C. For inop ALS, increase LNAV/VNAV all Cats visibility to 1¼ SM and LNAV Cats C and D visibility to RVR 5500.</p>		

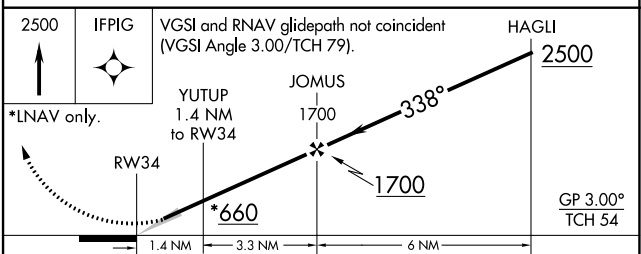
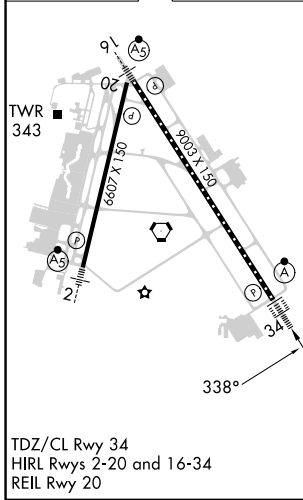
ATIS <b>119.15 263.025</b>	POTOMAC APP CON <b>126.4 282.375</b> (001°-185°) <b>126.75 307.2</b> (186°-360°)	RICHMOND TOWER <b>121.1 257.8</b>	GND CON <b>121.9 348.6</b>	CLNC DEL <b>127.55 348.6</b>
-------------------------------	--	--------------------------------------	-------------------------------	---------------------------------



NE-3, 28 NOV 2024 to 26 DEC 2024

NE-3, 28 NOV 2024 to 26 DEC 2024

ELEV 168	<b>D</b>	TDZE 161
----------	----------	----------



CATEGORY	A	B	C	D
LPV DA		361/18	200 (200-½)	
LNAV/VNAV DA		530/37	369 (400-¾)	
LNAV MDA	520/24	359 (400-½)	520/30	359 (400-¾)
<b>C</b> CIRCLING	660-1	492 (500-1)	700-1½ 532 (600-1½)	720-2 552 (600-2)