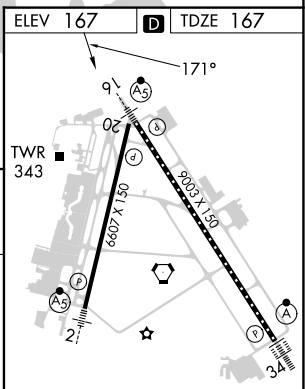
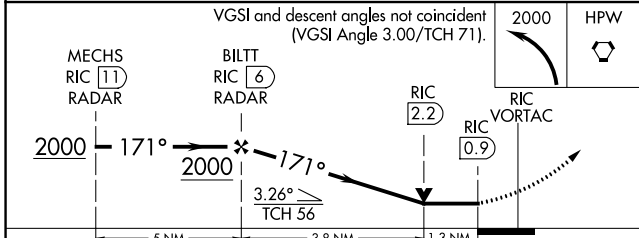
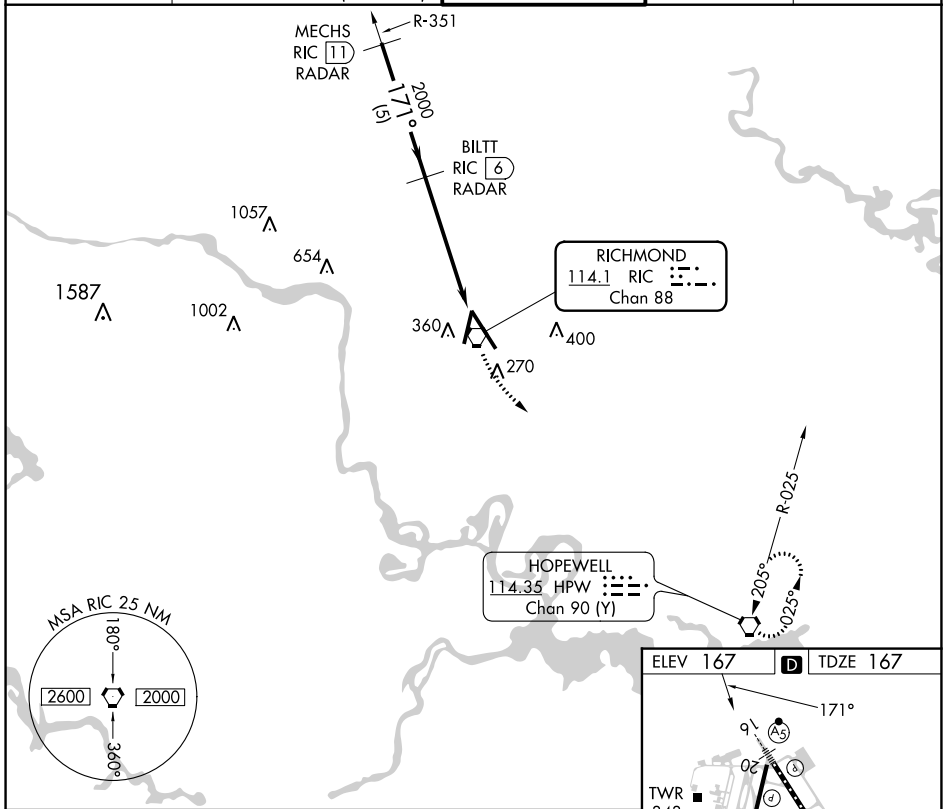


VORTAC RIC 114.1 Chan 88	APP CRS 171°	Rwy Idg TDZE 167 Apt Elev 167	9003
--	------------------------	---	-------------

VOR RWY 16

RICHMOND INTL (RIC)

DME or RADAR required. RADAR required for procedure entry.		MALSR	MISSED APPROACH: Climbing left turn to 2000 direct HPW VORTAC and hold.	
▼ Rwy 16 helicopter visibility reduction below RVR 4000 NA. For inop ALS, increase S-16 Cat A/B visibility to RVR 5500, and Cat C/D to 1 3/8 SM.				
ATIS 119.15 263.025	POTOMAC APP CON 126.4 282.375 (001°-185°) 126.75 307.2 (186°-360°)	RICHMOND TOWER 121.1 257.8	GND CON 121.9 348.6	CLNC DEL 127.55 348.6



CATEGORY	A	B	C	D	ELEV 167	TDZE 167
S-16	640/40 473 (500-3/4)			640/50 473 (500-1)	D TDZE 167	
CIRCLING	660-1 493 (500-1)	700-1 1/2 533 (600-1 1/2)		720-2 553 (600-2)	TWR 343 HPW 2000 1710 1500 1300 1150 900 343 34	
					TDZ/CL Rwy 34 HIRL Rwys 2-20 and 16-34 REIL Rwy 20 FAF to MAP 5.1 NM	
					Knots	60 90 120 150 180
					Min:Sec	5:06 3:24 2:33 2:02 1:42

NE-3, 28 NOV 2024 to 26 DEC 2024

NE-3, 28 NOV 2024 to 26 DEC 2024