

VOR Y RWY 32

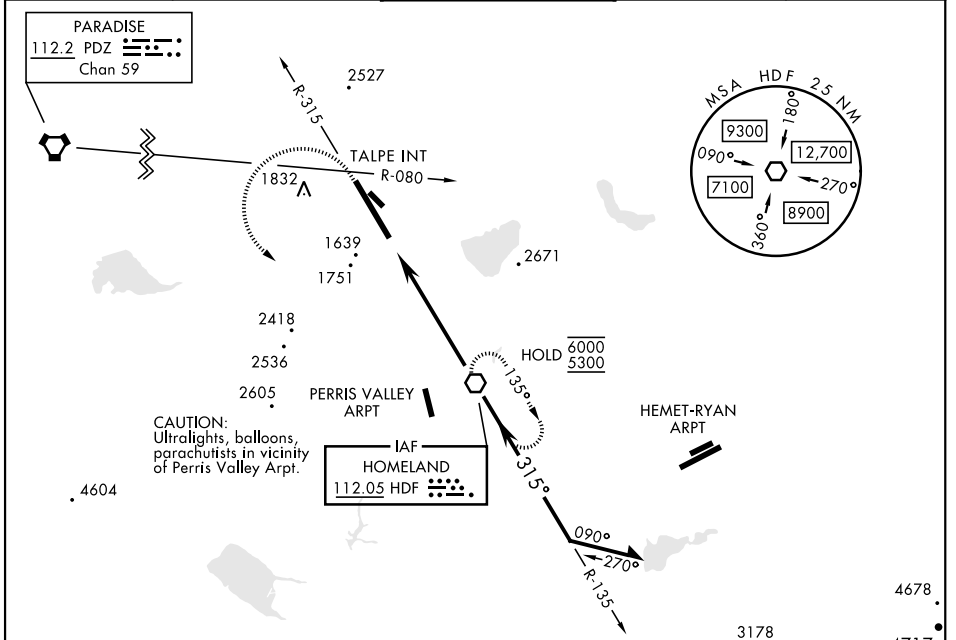
VOR HDF 112.05	APCH CRS 315°	Rwy Ldg 13,302 TDZE 1497 Arpt Elev 1536	AL-348 [USAF]	MARCH ARB (KRIV)
--------------------------	-------------------------	--	---------------	------------------

▼ *When ALS inop, increase CAT AB RVR to 60 and vis to 1½ mile, CAT CDE vis to 1½ miles.
** Circling not authorized NE of Rwy 14-32. Rapid rising terrain.



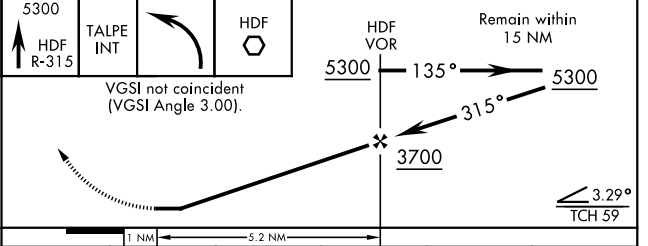
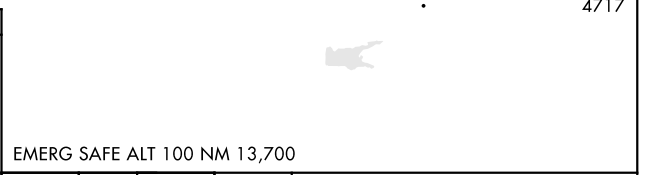
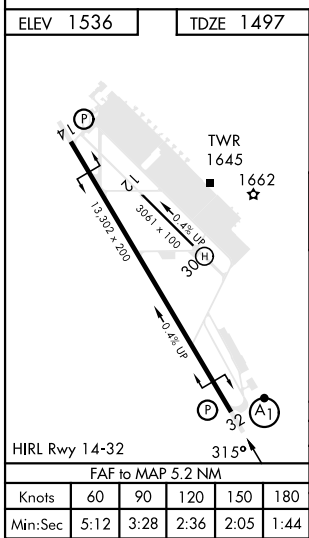
MISSED APPROACH: Climb to 5300 on HDF VOR R-315 to TALPE, then turn left direct HDF continue climb-in-hold to 5300.

ATIS 134.75 239.05	APP/DEP CON ★ 133.5 306.975	TOWER 127.65 253.5	GND CON 121.75 335.8	CLNC DEL 127.775 268.7
------------------------------	---------------------------------------	------------------------------	--------------------------------	----------------------------------



SW-3, 28 NOV 2024 to 26 DEC 2024

SW-3, 28 NOV 2024 to 26 DEC 2024



VOR Y RWY 32