

(HOKEE3.HOKEE) 23334

ROANOKE/BLACKSBURG RGNL (WOODRUM FLD) (R.O.A.)

HOKEE THREE DEPARTURE

AL-349 (FAA)

ROANOKE, VIRGINIA

ATIS
 132.375
 CLNC DEL
 119.7
 GND CON
 121.9 257.8
 ROANOKE TOWER
 118.3 257.8
 ROANOKE DEP CON
 126.9 339.8

**TOP ALTITUDE:
5000**

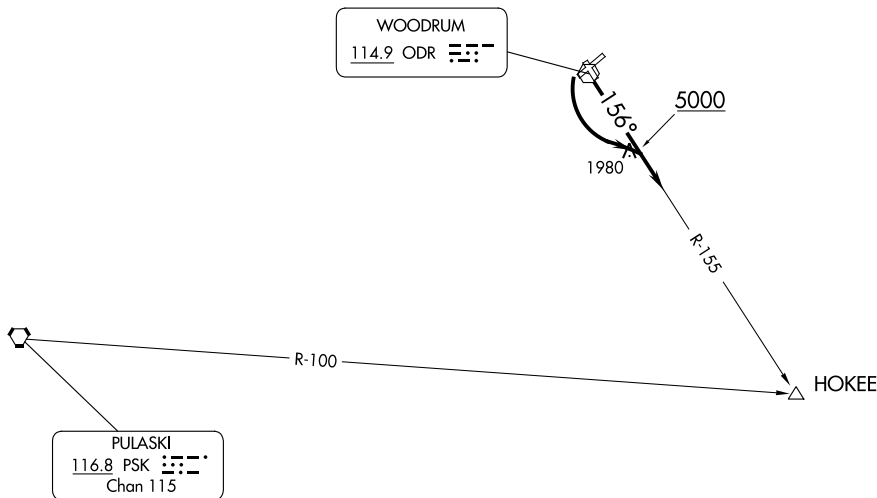
NOTE: RADAR required.

TAKEOFF MINIMUMS:

Rwys 6, 34: NA - Obstacles

Rwy 16: Standard with minimum climb of 260' per NM to 2300

Rwy 24: Standard with minimum climb of 205' per NM to 2800



NOTE: Chart not to scale.



DEPARTURE ROUTE DESCRIPTION

TAKEOFF RUNWAY 16: Climb to 5000 on heading 156° to intercept ODR R-155 to HOKEE INT. Expect RADAR vectors to filed/assigned route.

TAKEOFF RUNWAY 24: Climbing left turn to 5000 to intercept ODR R-155 to HOKEE INT. Expect RADAR vectors to filed/assigned route.

HOKEE THREE DEPARTURE

(HOKEE3.HOKEE) 10DEC15

ROANOKE, VIRGINIA

ROANOKE/BLACKSBURG RGNL (WOODRUM FLD) (R.O.A.)

NE-3, 28 NOV 2024 to 26 DEC 2024

NE-3, 28 NOV 2024 to 26 DEC 2024