


LOC I-ROA <b>109.7</b>	APP CRS <b>336°</b>	Rwy ldg <b>5810</b>
		TDZE <b>1160</b>
		Apt Elev <b>1175</b>

# ILS or LOC RWY 34

ROANOKE/BLACKSBURG RGNL (WOODRUM FLD) (R.O.A)

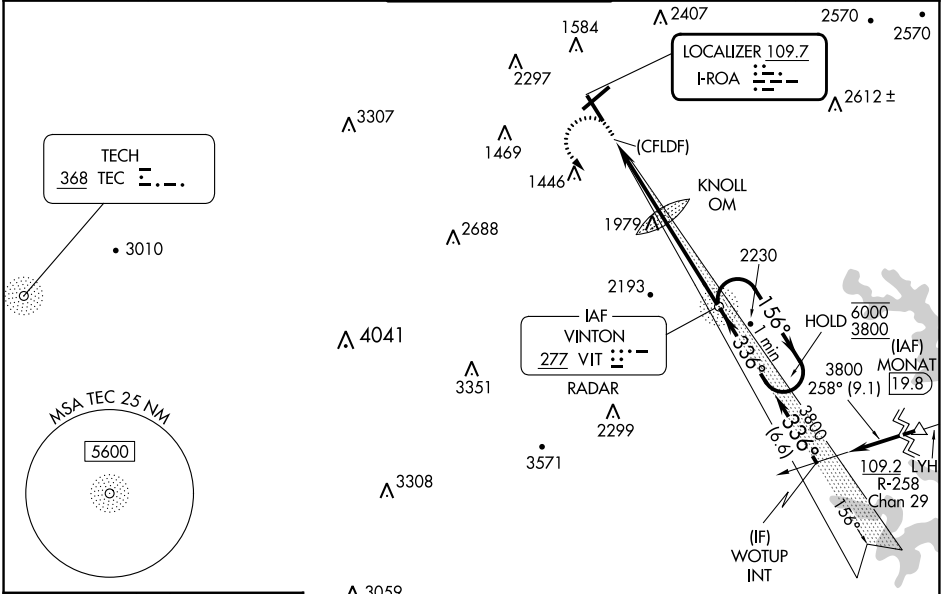
DME required for procedure entry. ADF or RADAR required.

**▼** For inop ALS, increase S-ILS 34 # all Cats visibility to 1 3/8 SM. Circling NA northwest of Rwy 6-24.  
**▲** Inop table does not apply to S-ILS 34 all Cats.

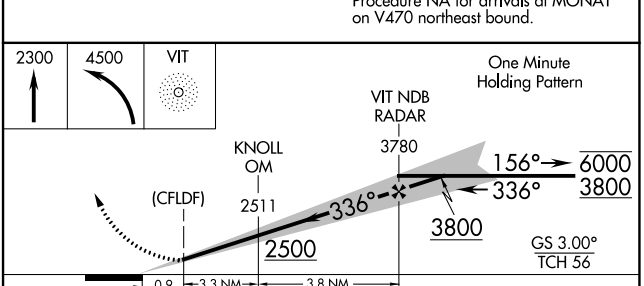
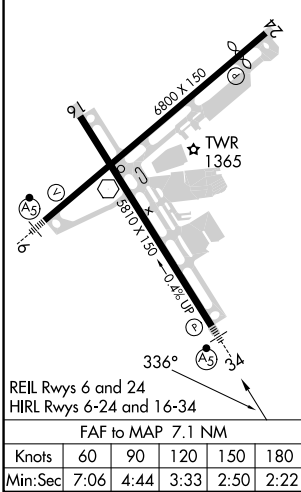
**MALSR**  


**MISSED APPROACH:** Climb to 2300 then climbing left turn to 4500 direct VIT NDB and hold. Continue climb-in-hold to 4500. # Missed approach requires minimum climb of 425 feet per NM to 3700.

ATIS <b>132.375</b>	ROANOKE APP CON <b>126.9 339.8</b>	ROANOKE TOWER <b>118.3 257.8</b>	GND CON <b>121.9 257.8</b>	CLNC DEL <b>119.7</b>
------------------------	---------------------------------------	-------------------------------------	-------------------------------	--------------------------



ELEV 1175	<b>D</b>	TDZE 1160
-----------	----------	-----------



CATEGORY	A		B		C		D	
	1	2	1	2	1	2	1	2
S-ILS 34 #	1603-7/8		443 (500-7%)					
S-ILS 34	2040-4		880 (900-4)					
S-LOC 34	2140-3/4 980 (1000-3/4)	2140-1 980 (1000-1)	2140-2 1/2 980 (1000-2 1/2)					
CIRCLING	2140-1 1/4 965 (1000-1 1/4)	2140-1 1/2 965 (1000-1 1/2)	2460-3 1285 (1300-3)	2800-3 1625 (1700-3)				

NE-3, 28 NOV 2024 to 26 DEC 2024

NE-3, 28 NOV 2024 to 26 DEC 2024