

LOC/DME I-SZK 111.1 Chan 48	APP CRS 072°	Rwy Idg 6800 TDZE 1175 Apt Elev 1175
---	------------------------	---

LDA Z RWY 6

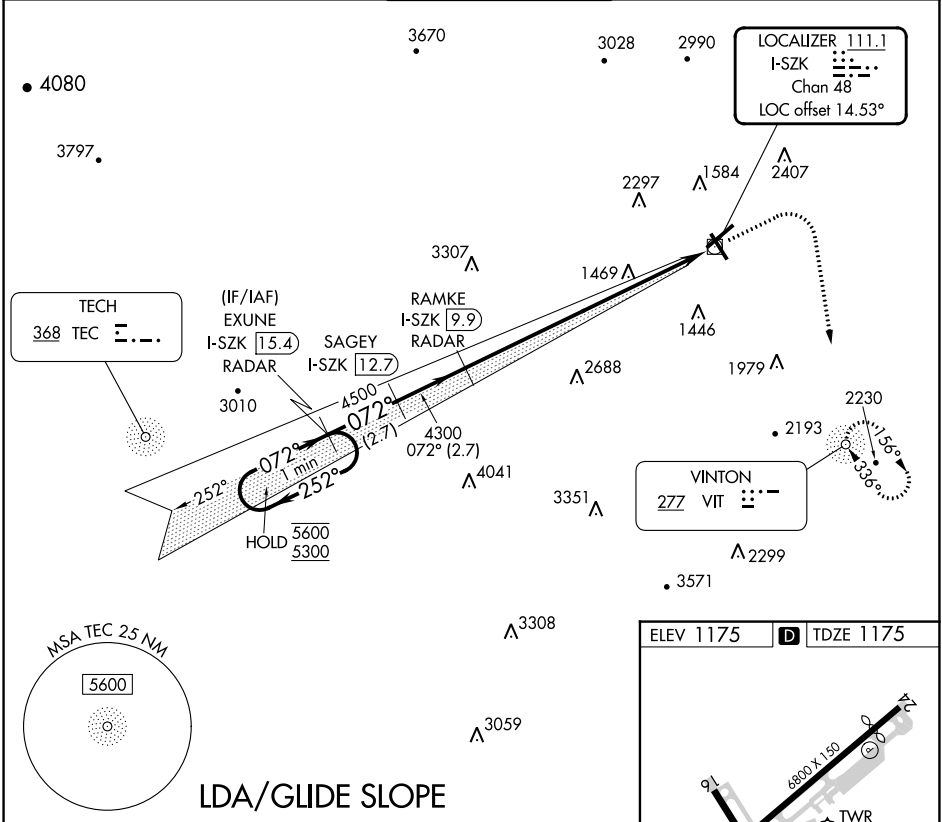
ROANOKE/BLACKSBURG RGNL (WOODRUM FLD) (R.O.A)

ADF required. RADAR required for procedure entry.

MALSRL MISSED APPROACH: Climb to 1800 then climbing right turn to 5000 direct VIT NDB and hold, continue climb-in-hold to 5000. Missed approach requires minimum climb of 350 feet per NM to 3600.

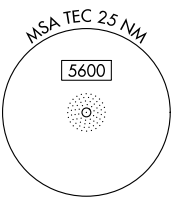
-13°C For inop ALS, increase S-LDA/GS 6 visibility all Cats to 7/8 SM.

ATIS 132.375	ROANOKE APP CON 126.9 339.8	ROANOKE TOWER 118.3 257.8	GND CON 121.9 257.8	CLNC DEL 119.7
------------------------	---------------------------------------	-------------------------------------	-------------------------------	--------------------------

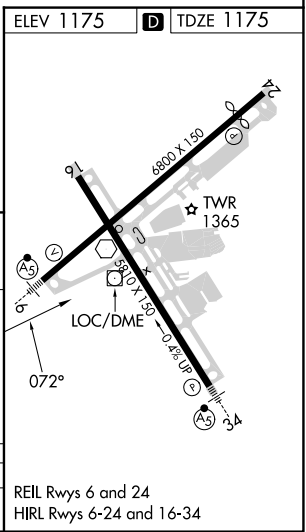
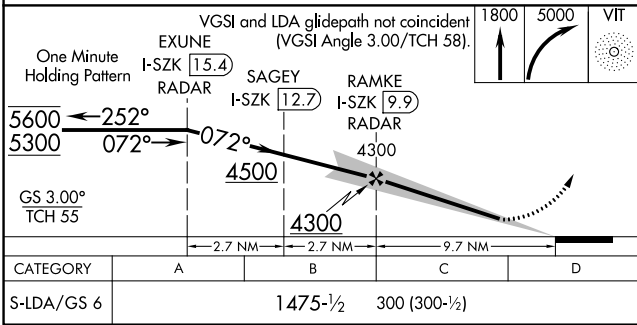


NE-3, 28 NOV 2024 to 26 DEC 2024

NE-3, 28 NOV 2024 to 26 DEC 2024



LDA/GLIDE SLOPE



LDA Z RWY 6