

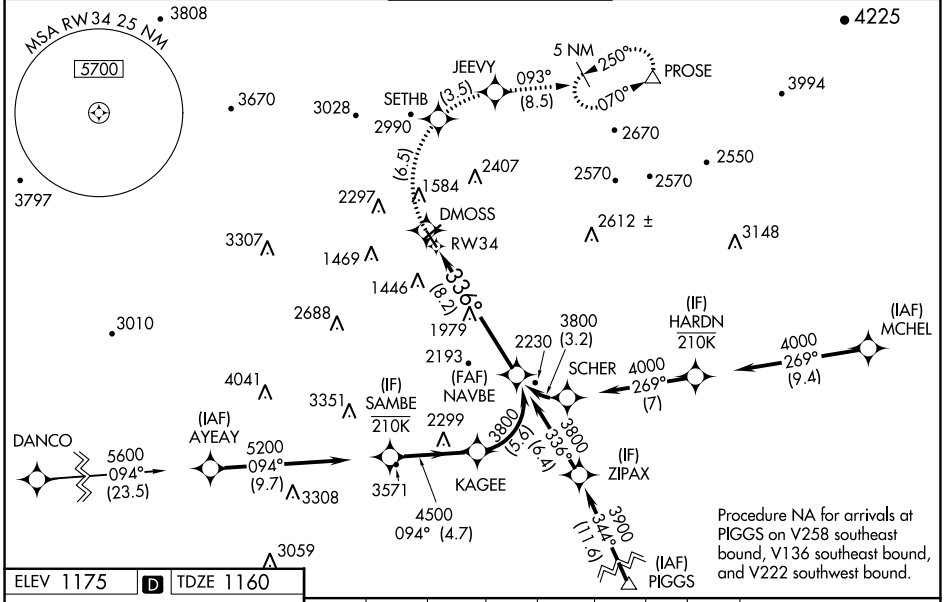
APP CRS	Rwy Idg	5810
336°	TDZE	1160
	Apt Elev	1175

RNAV (RNP) Z RWY 34

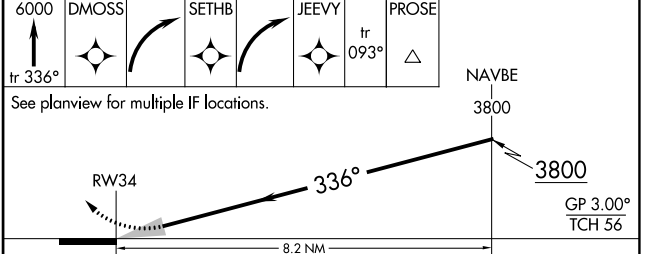
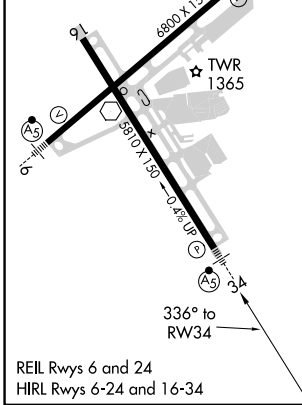
ROANOKE/BLACKSBURG RGNL (WOODRUM FLD) (R.O.A)

RNP AR APCH. RF required.	MALSRL	MISSED APPROACH: Climb to 6000 on track 336° to DMOSS, right turn to SETHB, right turn to JEEVY and on track 093° to PROSE and hold. * Missed approach requires minimum climb of 350 feet per NM to 4100. # Missed approach requires minimum climb of 415 feet per NM to 4100.
<p>⚠ Missed approach requires RNP less than 1.0. For inop ALS, increase RNP 0.30* all Cats visibility to 1 1/2 SM. Inop table does not apply to RNP 0.30.</p> <p>❄ -13°C</p> <p>For uncompleted Baro-VNAV systems, procedure NA below -14°C or above 54°C.</p>		

ATIS 132.375	ROANOKE APP CON 126.9 339.8	ROANOKE TOWER 118.3 257.8	GND CON 121.9 257.8	CLNC DEL 119.7
------------------------	---------------------------------------	-------------------------------------	-------------------------------	--------------------------



ELEV 1175	D	TDZE 1160
-----------	----------	-----------



CATEGORY	A	B	C	D
RNP 0.15 DA #		1495-1/2	335 (400-1/2)	
RNP 0.30 DA*		1646-1	486 (500-1)	
RNP 0.30 DA		2115-4	955 (1000-4)	

AUTHORIZATION REQUIRED

NE-3, 28 NOV 2024 to 26 DEC 2024

NE-3, 28 NOV 2024 to 26 DEC 2024