

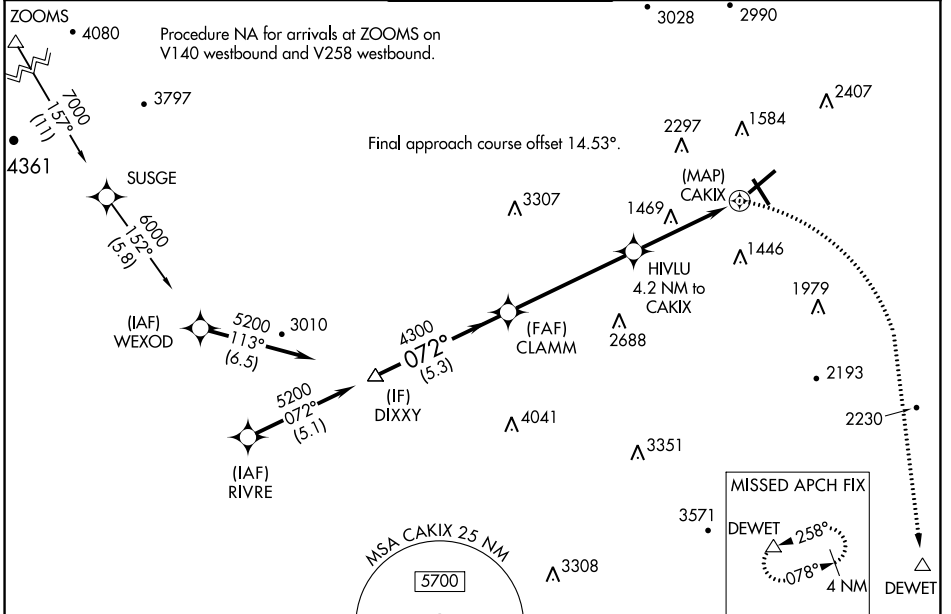
APP CRS	Rwy Idg	<b>6800</b>
<b>072°</b>	TDZE	<b>1175</b>
	Apt Elev	<b>1175</b>

# RNAV (GPS) Y RWY 6

ROANOKE/BLACKSBURG RGNL (WOODRUM FLD) (R.O.A)

RNP APCH - GPS.		MALSR	MISSED APPROACH: Climbing right turn to 4000 direct DEWET and hold. ** Misted approach requires minimum climb of 276 feet per NM to 2700.
<p>Circling NA northwest of Rwy 6-24. For inop ALS, increase LNAV Cat C and D visibility to 2½ SM.</p>			
-13°C			

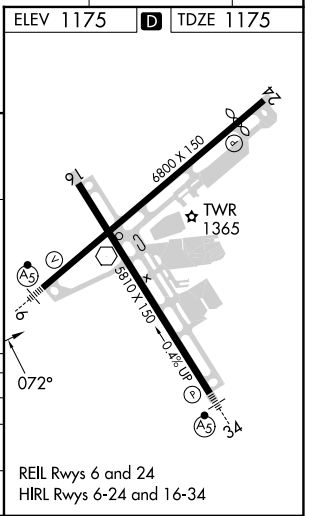
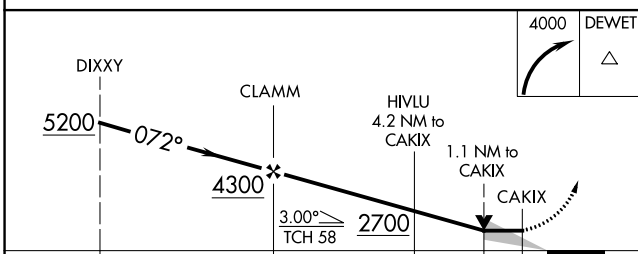
ATIS	ROANOKE APP CON	ROANOKE TOWER	GND CON	CLNC DEL
<b>132.375</b>	<b>126.9 339.8</b>	<b>118.3 257.8</b>	<b>121.9 257.8</b>	<b>119.7</b>



NE-3, 28 NOV 2024 to 26 DEC 2024

NE-3, 28 NOV 2024 to 26 DEC 2024

ELEV 1175	<b>D</b>	TDZE 1175
-----------	----------	-----------



CATEGORY	A	B	C	D
LNAV MDA**	1720-½	545 (600-½)	1720-1⅛	545 (600-1⅛)
LNAV MDA	1980-½ 805 (900-½)	1980-¾ 805 (900-¾)	1980-1⅞	805 (900-1⅞)
<b>C</b> CIRCLING	1980-1 805 (900-1)	1980-1¼ 805 (900-1¼)	2460-3 1285 (1300-3)	2800-3 1625 (1700-3)

REIL Rwy 6 and 24  
HIRL Rwy 6-24 and 16-34