

(SCUTA3.SCUTA) 22027

ROANOKE/BLACKSBURG RGNL (WOODRUM FLD) (R.O.A.)

SCUTA THREE DEPARTURE (RNAV) AL-349 (FAA)

ROANOKE, VIRGINIA

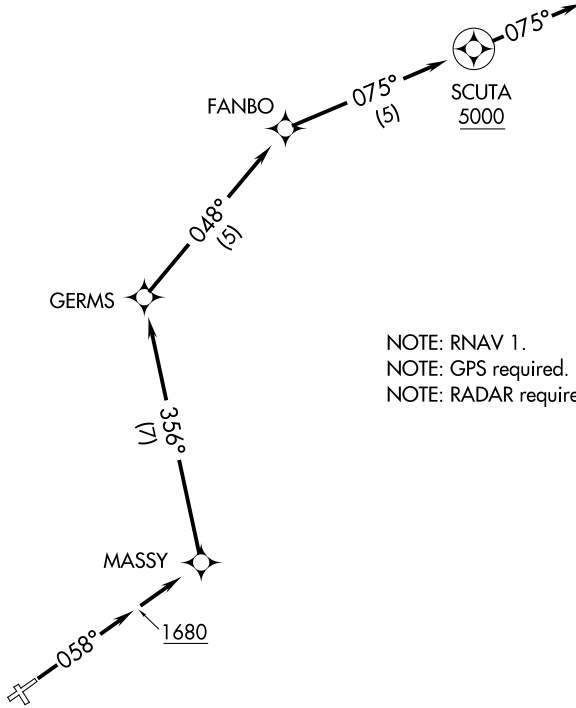
ATIS
132.375
CLNC DEL
119.7
GND CON
121.9 257.8
ROANOKE DEP CON
126.9 339.8
ROANOKE TOWER
118.3 257.8

**TOP ALTITUDE:
5000**

TAKEOFF MINIMUMS

Rwys 16, 24, 34: NA - Air Traffic.

Rwy 6: Standard with minimum climb
of 560' per NM to 2900.



NOTE: RNAV 1.
NOTE: GPS required.
NOTE: RADAR required.

NOTE: Chart not to scale.



DEPARTURE ROUTE DESCRIPTION

TAKEOFF RUNWAY 6: Climb heading 058° to 1680, then direct MASSY.
Then on depicted route to cross SCUTA at or above 5000 on heading 075° for
RADAR vectors. Maintain 5000 or assigned altitude, expect clearance to filed
altitude 10 minutes after departure.

SCUTA THREE DEPARTURE (RNAV)

ROANOKE, VIRGINIA

(SCUTA3.SCUTA) 10OCT19

ROANOKE/BLACKSBURG RGNL (WOODRUM FLD) (R.O.A.)

NE-3, 28 NOV 2024 to 26 DEC 2024

NE-3, 28 NOV 2024 to 26 DEC 2024