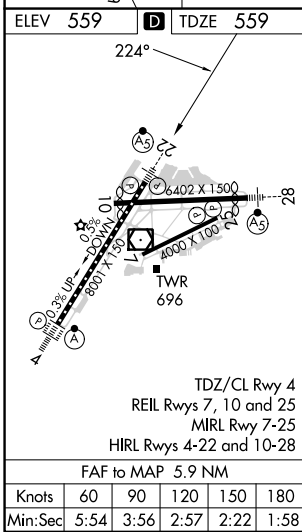
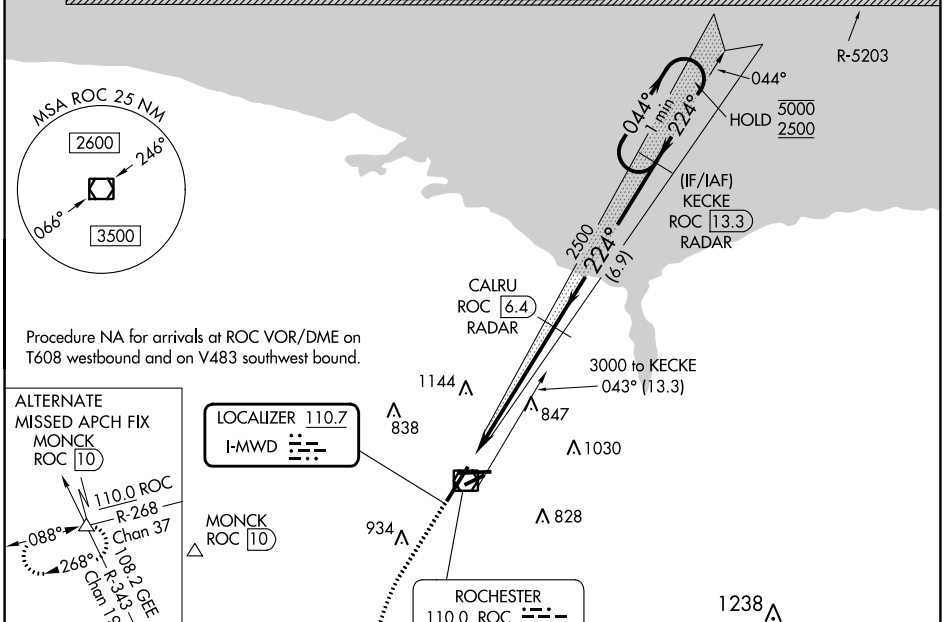


LOC I-MWD 110.7	APP CRS 224°	Rwy Idg TDZE Apt Elev	8001 559 559
---------------------------	------------------------	-----------------------------	---

ILS or LOC RWY 22

FREDERICK DOUGLASS/GREATER ROCHESTER INTL (ROC)

DME or RADAR required.		MALSR		MISSED APPROACH: Climb to 1000 then climbing left turn to 4000 direct GEE VOR/DME and hold.		
When R-5203 active hold in lieu NA. DME from ROC VOR/DME. DME use requires simultaneous reception of I-MWD and ROC DME. * RVR 1800 authorized with use of FD or AP or HUD to DA.		ATIS 124.825	ROCHESTER APP CON 119.55 269.6	ROCHESTER TOWER 118.3 254.3	GND CON 121.7	CLNC DEL 118.8 343.65



NE-2, 28 NOV 2024 to 26 DEC 2024

NE-2, 28 NOV 2024 to 26 DEC 2024