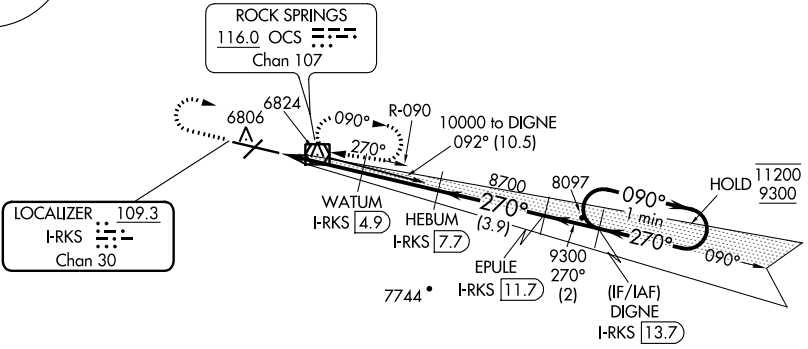
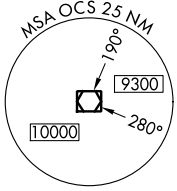


LOC/DME I-RKS 109.3 Chan 30	APP CRS 270°	Rwy Idg TDZE Apt Elev	10000 6765 6765
--	------------------------	-----------------------------	--

ILS or LOC RWY 27

SOUTHWEST WYOMING RGNL (R.KS)

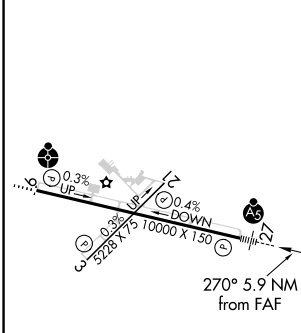
DME required.		MALSR	MISSED APPROACH: Climb to 7600 then climbing right turn to 9300 direct OCS VOR/DME and hold, continue climb-in-hold to 9300.
ASOS 118.375	SALT LAKE CENTER 124.35 353.5	UNICOM 122.8 (CTAF) 0	



NW-1, 28 NOV 2024 to 26 DEC 2024

NW-1, 28 NOV 2024 to 26 DEC 2024

ELEV 6765	D	TDZE 6765
-----------	----------	-----------



7600	9300	OCS	Use I-RKS DME when on the localizer course.			
*LOC only.		HEBUM I-RKS 7.7	EPULE I-RKS 11.7	DIGNE I-RKS 13.7	One Minute Holding Pattern	
WATUM I-RKS 4.9		8700	9300	11200	GS 3.00° TCH 55	
*I-RKS 2.7		8700	9300	11200		
I-RKS 1.8		7800*	8700	9300		
0.9		2.2 NM	2.8 NM	3.9 NM	2 NM	

CATEGORY	A	B	C	D
S-ILS-27		6965-1/2	200 (200-1/2)	
S-LOC 27		7100-1/2	335 (400-1/2)	
C CIRCLING	7140-1 375 (400-1)	7220-1 455 (500-1)	7220-1 1/2 455 (500-1 1/2)	7540-2 1/2 775 (800-2 1/2)

MIRL Rwy 3-21
HIRL Rwy 9-27 **0**
REIL Rws 3 and 21 **0**