

WAAS CH 66016 W09A	APP CRS 090°	Rwy Idg 10000 TDZE 6741 Apt Elev 6765
--	------------------------	--

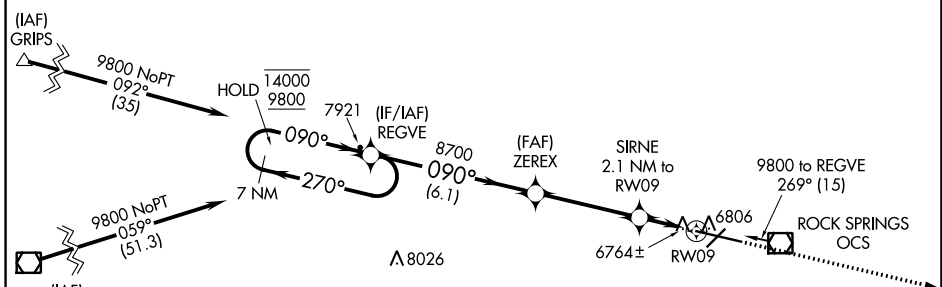
RNAV (GPS) RWY 9

SOUTHWEST WYOMING RGNL (R.K.S)

RNP APCH.	ODALS	MISSED APPROACH: Climb to 9600 direct DIGNE and hold.
<p>▼ For uncompensated Baro-VNAV systems, LNAV/VNAV NA below -28°C or above 45°C.</p> <p>▲</p>		

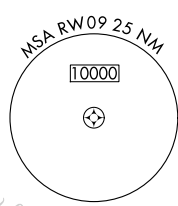
ASOS 118.375	SALT LAKE CENTER 124.35 353.5	UNICOM 122.8 (CTAF) 0
------------------------	---	---------------------------------

• 8003

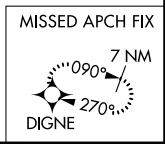


NW-1, 28 NOV 2024 to 26 DEC 2024

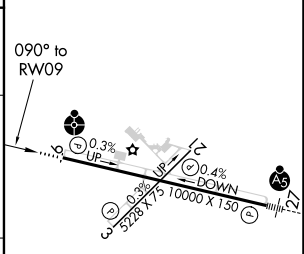
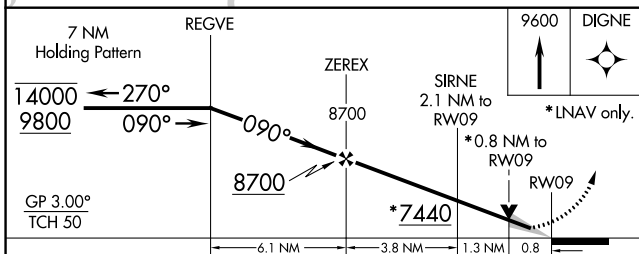
NW-1, 28 NOV 2024 to 26 DEC 2024



Procedure NA for arrivals at OCS VOR/DME on V328 southeast bound, V391 northbound, and T298 northeast bound.



▲ 8798	ELEV 6765	TDZE 6741
--------	-----------	-----------



CATEGORY	A	B	C	D
LPV DA	6941-3/4 200 (200-3/4)			
LNAV/VNAV DA	7034-3/4 293 (300-3/4)			
LNAV MDA	7040-3/4 299 (300-3/4)			7040-1 299 (300-1)
CIRCLING	7140-1 375 (400-1)	7220-1 455 (500-1)	7220-1 1/2 455 (500-1 1/2)	7540-2 1/2 775 (800-2 1/2)

MIRL Rwy 3-21
HIRL Rwy 9-27 0
REIL Rws 3 and 21 0