

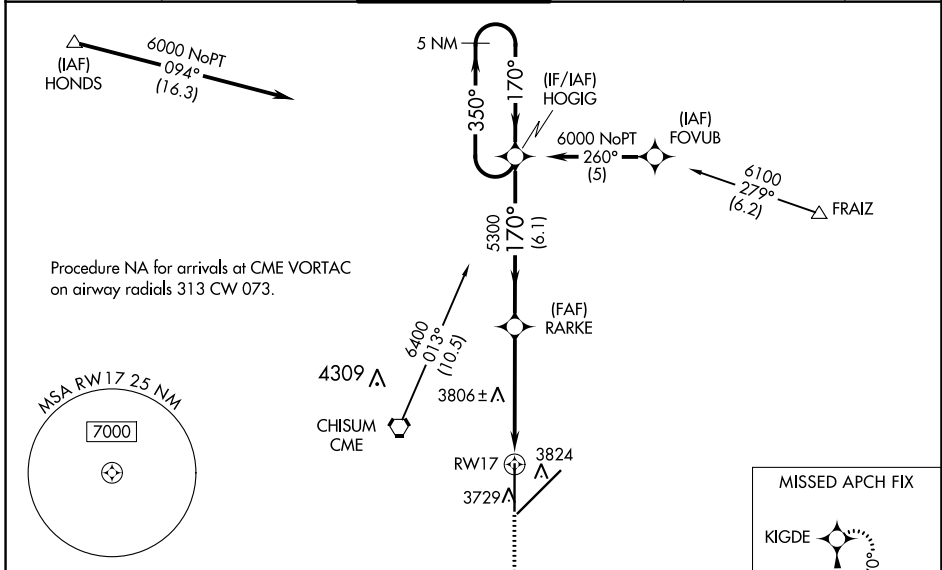
WAAS CH <b>65702</b> <b>W17A</b>	APP CRS <b>170°</b>	Rwy ldg <b>10008</b> TDZE <b>3666</b> Apt Elev <b>3671</b>
--	------------------------	--

# RNAV (GPS) RWY 17

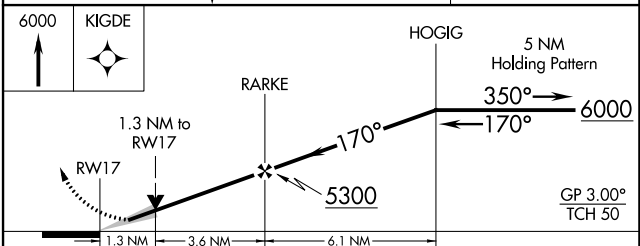
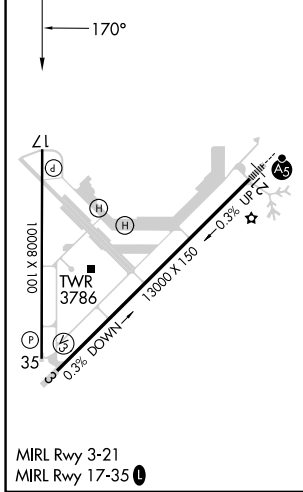
ROSWELL AIR CENTER (ROW)

RNP APCH - GPS.	<p>MISSED APPROACH: Climb to 6000 direct KIGDE and hold.</p>
<p><b>⚠</b> For uncompensated Baro-VNAV systems, LNAV/VNAV NA below -22°C or above 41°C. When local altimeter setting not received, use Artesia altimeter setting: increase LPV DA to 4083 feet and all visibilities ¼ SM; increase LNAV/VNAV DA to 4083 feet; increase all MDAs 80 feet and visibility LNAV Cat C ¼ SM and Circling Cat D ¼ SM. VDP and Baro-VNAV NA when using Artesia altimeter setting.</p>	

ATIS <b>128.45 306.2</b>	ROSWELL APP CON* <b>119.6 239.0</b>	ROSWELL TOWER* <b>118.5 (CTAF) 0 233.7</b>	GND CON <b>121.9 348.6</b>	CLNC DEL <b>132.875 282.25</b>	UNICOM <b>122.95</b>
-----------------------------	--	---	-------------------------------	-----------------------------------	-------------------------



ELEV 3671	<b>D</b>	TDZE 3666
-----------	----------	-----------



CATEGORY	A	B	C	D
LPV DA	3916-3/4 250 (300-3/4)			
LNAV/VNAV DA	4003-1 1/4 337 (400-1 1/4)			
LNAV MDA	4120-1	454 (500-1)	4120-1 1/4 454 (500-1 1/4)	4120-1 1/2 454 (500-1 1/2)
CIRCLING	4140-1 1/4	469 (500-1 1/4)	4140-1 1/2 469 (500-1 1/2)	4300-2 629 (700-2)

SW-1, 28 NOV 2024 to 26 DEC 2024

SW-1, 28 NOV 2024 to 26 DEC 2024