

LOC I-MCC <b>109.7</b>	APP CRS <b>163°</b>	Rwy ldg <b>10599</b> TDZE <b>77</b> Apt Elev <b>77</b>
---------------------------	------------------------	--

# ILS or LOC RWY 16

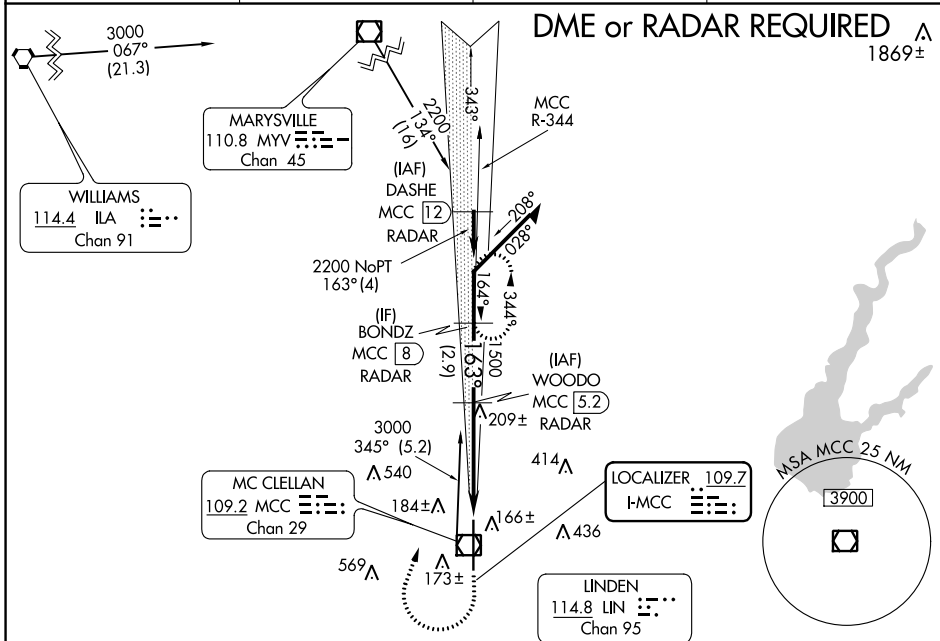
MC CLELLAN AIRFIELD (MCC)

**NA** DME from MCC VOR/DME. If local altimeter setting is not received, use Sacramento Intl altimeter setting and increase all DH/MDAs 40 feet.

**MALS**

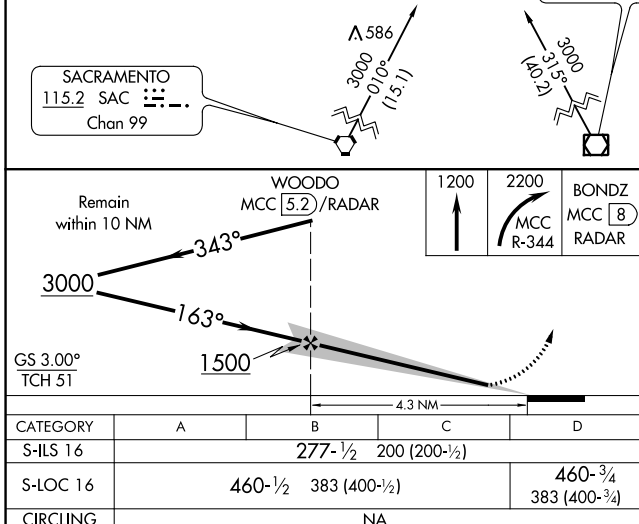
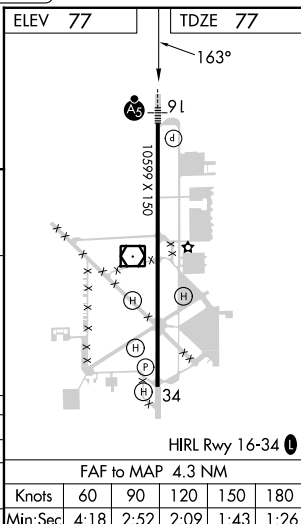
**MISSED APPROACH:** Climb to 1200 then climbing right turn to 2200 via MCC VOR/DME R-344 to BONDZ/MCC 8 DME/RADAR and hold.

AWOS-3 <b>125.975</b>	NORCAL APP CON <b>127.4 317.5</b>	CINC DEL <b>119.825</b>	UNICOM <b>122.975 (CTAF)</b>
--------------------------	--------------------------------------	----------------------------	---------------------------------



**DME or RADAR REQUIRED**

1869±



SW-2, 28 NOV 2024 to 26 DEC 2024

SW-2, 28 NOV 2024 to 26 DEC 2024