

WAAS CH 77819 W35A	APP CRS 356°	Rwy Idg TDZE Apt Elev	8061 815 827
---------------------------------	------------------------	-----------------------------	---

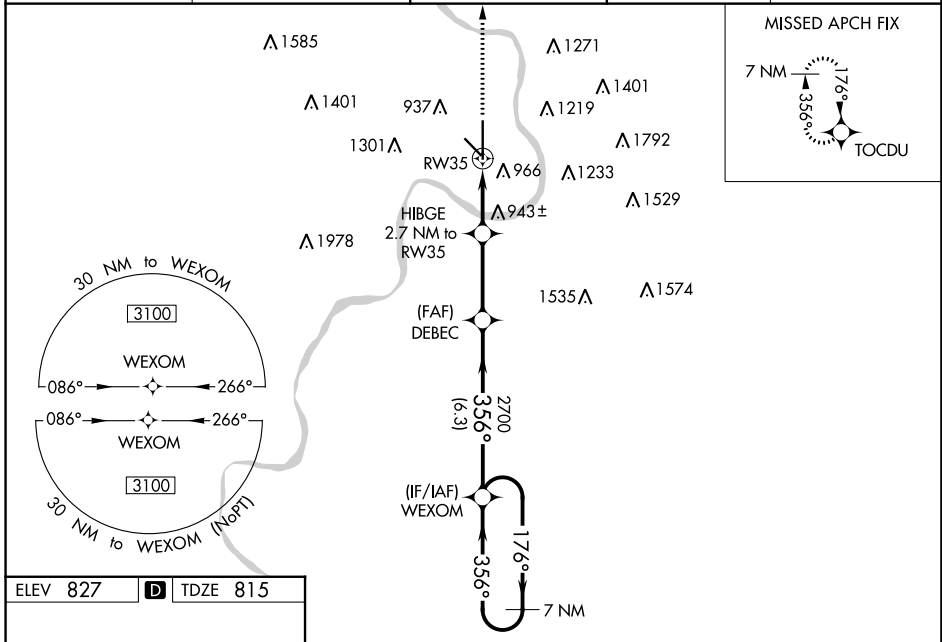
RNAV (GPS) RWY 35

ROSECRANS MEML (STJ)

⚠ For uncompensated Baro-VNAV systems, LNAV/VNAV NA below -20°C (-4°F) or above 54°C (130°F). DME/DME RNP-0.3 NA. VDP and Baro-VNAV NA when using Kansas City ASR/PAR Inlt altimeter setting. When local altimeter setting not received, use Kansas City Inlt altimeter setting and increase all DA 97 feet and increase LPV all Cats visibility to RVR 5000, and LNAV/VNAV all Cats visibility to 1 1/4 mile; increase all MDA 100 feet, and increase LNAV Cat C/D/E visibility 1/4 mile, and Circling Cat C 1/2 mile, Cat D 1/2 mile.

MISSED APPROACH:
Climb to 3000 direct TOCDU and hold.

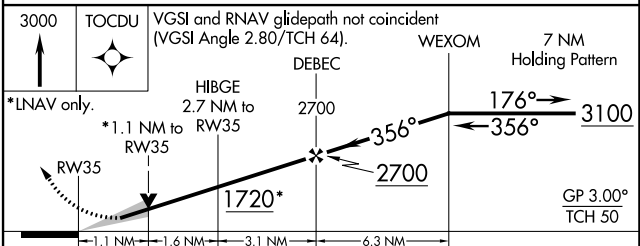
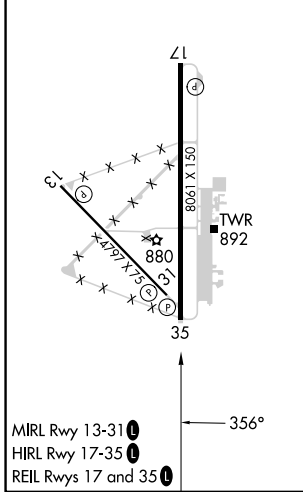
ATIS 125.05	ST. JOSEPH APP CON ★ 120.35 360.8	ST. JOSEPH TOWER ★ 126.9(CTAF) 239.0	GND CON 121.9	UNICOM 122.95
-----------------------	---	--	-------------------------	-------------------------



NC-3, 28 NOV 2024 to 26 DEC 2024

NC-3, 28 NOV 2024 to 26 DEC 2024

ELEV 827	D	TDZE 815
----------	----------	----------



CATEGORY	A	B	C	D	E
LPV DA	1015/40		200 (200-3/4)		
LNAV/VNAV DA	1096/45		281 (300-7/8)		
LNAV MDA	1200/55 385 (400-1)		1200/60 385 (400-1 1/4)		
C CIRCLING	1400-1 573 (600-1)	1420-1 593 (600-1)	1620-2 1/4 793 (800-2 1/4)	1640-2 3/4 813 (900-2 3/4)	1760-3 933 (1000-3)