

# RACER EIGHT DEPARTURE

AL-359 (FAA)

RADAR required.

**TOP ALTITUDE:  
10000**

ST. JOSEPH DEP CON \*  
120.35 360.8  
ATIS  
125.05

ST. JOSEPH  
115.5 STJ  
Chan 102

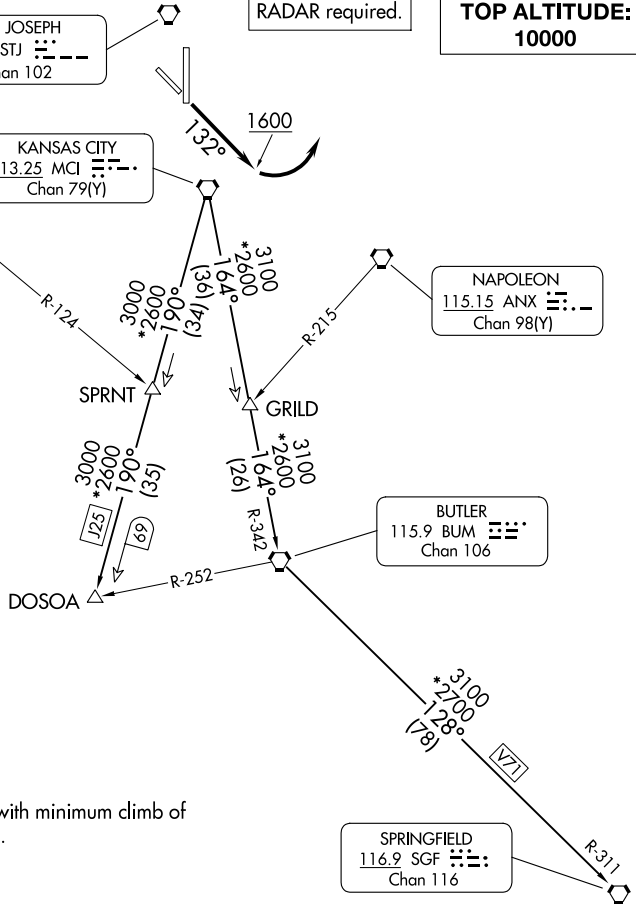
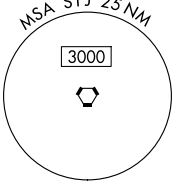
KANSAS CITY  
113.25 MCI  
Chan 79(Y)

TOPEKA  
117.8 TOP  
Chan 125

NAPOLEON  
115.15 ANX  
Chan 98(Y)

BUTLER  
115.9 BUM  
Chan 106

SPRINGFIELD  
116.9 SGF  
Chan 116



### TAKEOFF MINIMUMS

Rwys 13, 17, 35: Standard.  
Rwy 31, 400-2¼ or standard with minimum climb of 340' per NM to 1300.

NOTE: Chart not to scale.

### DEPARTURE ROUTE DESCRIPTION

**TAKEOFF RUNWAY 13:** Climb on heading 132° to 1600 before turning left, thence . . . .climb on assigned heading for RADAR vectors to appropriate route. Maintain 10000 or as assigned by ATC, expect filed altitude 10 minutes after departure.

**TAKEOFF ALL OTHER RUNWAYS:** Climb on assigned heading for RADAR vectors to appropriate route. Maintain 10000 or as assigned by ATC, expect filed altitude 10 minutes after departure.

**BUTLER TRANSITION (RACER8.BUM):** From over MCI VORTAC on MCI R-164 and BUM R-342 to BUM VORTAC.

**DOSOIA TRANSITION (RACER8.DOSOIA):** From over MCI VORTAC on MCI R-190 to DOSOIA.

**SPRINGFIELD TRANSITION (RACER8.SGF):** From over MCI VORTAC on MCI R-164 and BUM R-342 to BUM VORTAC, then on BUM R-128 and SGF R-311 to SGF VORTAC.