

| | | |
|--|------------------------|--|
| LOC/DME I-OGZ 111.95 Chan 56(Y) | APP CRS 123° | Rwy ldg TDZE Apt Elev 9000 618 618 |
|--|------------------------|--|

ILS RWY 11 (CAT II & III)

ST LOUIS LAMBERT INTL (STL)

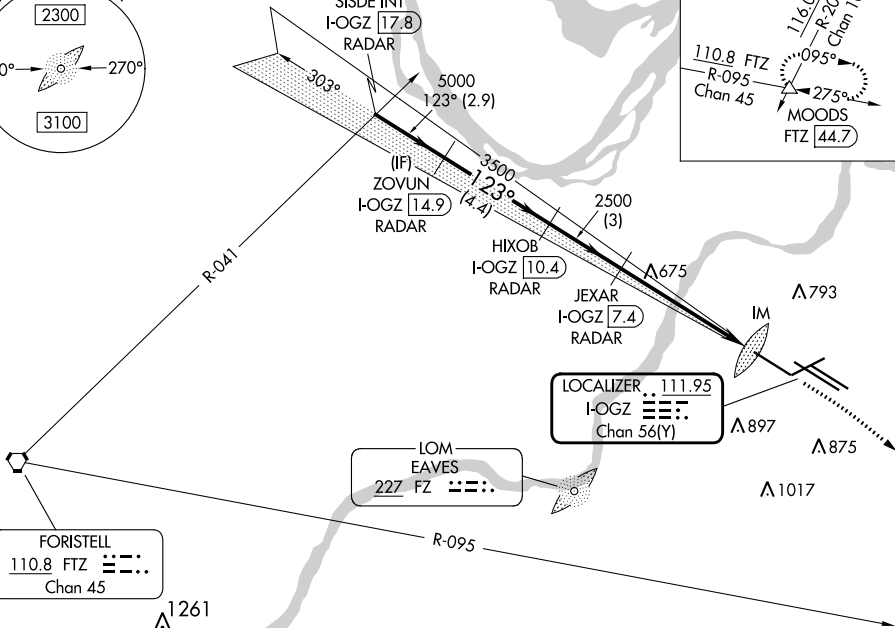
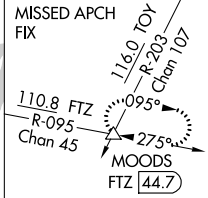
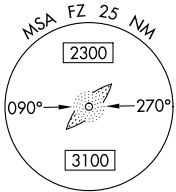
RADAR required for procedure entry. DME or RADAR required.



MISSED APPROACH: Climb to 1060 then climbing right turn to 3000 on heading 130° and FTZ R-095 to MOODS INT/FTZ 44.7 DME and hold.

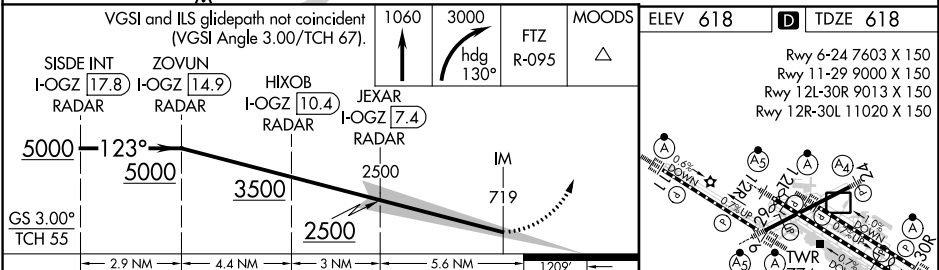
Simultaneous approach authorized with Rwy 12R/L. Disregard OM signal associated with ILS to Rwy 12R.

| | | | | | |
|--|---|---|---|--------------------------------|-------|
| D-ATIS 125.025 379.925 | ST. LOUIS APP CON 132.125 360.6 | ST. LOUIS TOWER 132.475 239.275 | GND CON 121.9 348.6 (Inbound) 121.65 377.175 (Outbound) 118.925 227.125 (Rwy 11/29) | CLNC DEL 119.5 363.1 | CPDLC |
|--|---|---|---|--------------------------------|-------|



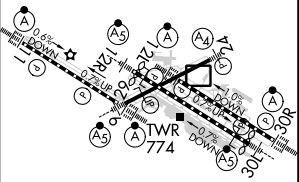
NC-3, 28 NOV 2024 to 26 DEC 2024

NC-3, 28 NOV 2024 to 26 DEC 2024



| | | | | |
|----------|-----------------------------|---|---|---|
| CATEGORY | A | B | C | D |
| S-ILS 11 | CAT II RA 187/12 100 DA 718 | | | |
| S-ILS 11 | CAT III RVR 06 | | | |

VGSI and ILS glidepath not coincident (VGSI Angle 3.00/TCH 67).
 1060 ↑
 3000 hdg 130°
 FTZ R-095
 MOODS △
 ELEV 618 [D] TDZE 618
 Rwy 6-24 7603 X 150
 Rwy 11-29 9000 X 150
 Rwy 12L-30R 9013 X 150
 Rwy 12R-30L 11020 X 150



CATEGORY II & III ILS - SPECIAL AIRCREW & AIRCRAFT CERTIFICATION REQUIRED

HIRL all Rwys
 TDZ/CL Rwys 11, 12L, 12R, 29, and 30R