

**TOP ALTITUDE:
5000**

D-ATIS
125.025 379.925
CLINC DEL
119.5 363.1
CPDLC
GND CON
121.9 348.6 (Inbound)
121.65 377.175 (Outbound)
118.925 227.125 (Rwy 11/29)
ST. LOUIS TOWER
120.05 284.6 (Rwys 12L/30R, 24)
118.5 257.7 (Rwy 12R/30L)
132.475 239.275 (Rwys 6, 11/29)
ST. LOUIS DEP CON
128.1 307.05

NOTE: RNAV 1.
NOTE: DME/DME/IRU or GPS required.
NOTE: RADAR required.
NOTE: For use by turbojet aircraft only.

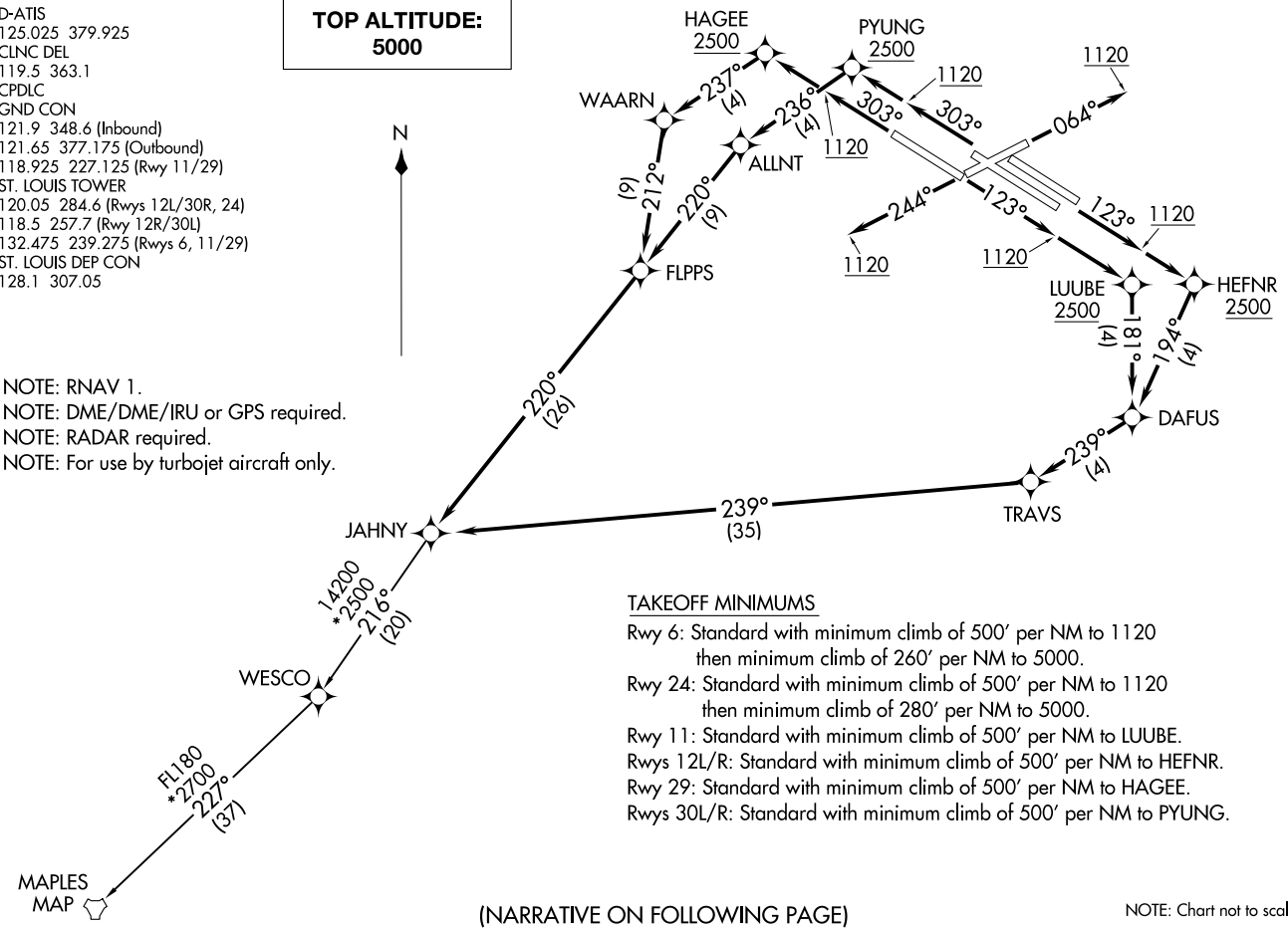
JAHNY SIX DEPARTURE (RNAV)
(JAHNY6 JAHNY) 12AUG21

ST. LOUIS, MISSOURI
ST LOUIS LAMBERT INTL (STL)

(JAHNY6 JAHNY) 21224
JAHNY SIX DEPARTURE (RNAV)

AL-360 (FAA)

ST LOUIS LAMBERT INTL (STL)
ST. LOUIS, MISSOURI



TAKEOFF MINIMUMS

- Rwy 6: Standard with minimum climb of 500' per NM to 1120 then minimum climb of 260' per NM to 5000.
- Rwy 24: Standard with minimum climb of 500' per NM to 1120 then minimum climb of 280' per NM to 5000.
- Rwy 11: Standard with minimum climb of 500' per NM to LUUBE.
- Rwys 12L/R: Standard with minimum climb of 500' per NM to HEFNR.
- Rwy 29: Standard with minimum climb of 500' per NM to HAGEE.
- Rwys 30L/R: Standard with minimum climb of 500' per NM to PYUNG.

(NARRATIVE ON FOLLOWING PAGE)

NOTE: Chart not to scale.



DEPARTURE ROUTE DESCRIPTION

TAKEOFF RUNWAY 6: Climb on heading 064° to 1120, then as assigned by ATC, expect RADAR vectors to JAHNY. Thence. . . .

TAKEOFF RUNWAY 24: Climb on heading 244° to 1120, then as assigned by ATC, expect RADAR vectors to JAHNY. Thence. . . .

TAKEOFF RUNWAY 11: Climb on heading 123° to 1120, then direct LUUBE, cross LUUBE at or above 2500, then on depicted route to JAHNY. Thence. . . .

TAKEOFF RUNWAYS 12L/R: Climb on heading 123° to 1120, then direct HEFNR, cross HEFNR at or above 2500, then on depicted route to JAHNY. Thence. . . .

TAKEOFF RUNWAY 29: Climb on heading 303° to 1120, then direct HAGEE, cross HAGEE at or above 2500, then on depicted route to JAHNY. Thence. . . .

TAKEOFF RUNWAYS 30L/R: Climb on heading 303° to 1120, then direct PYUNG, cross PYUNG at or above 2500, then on depicted route to JAHNY. Thence. . . .

. . . . Maintain 5000, expect filed altitude 10 minutes after departure.

MAPLES TRANSITION (JAHNY6.MAP)

NC-3, 28 NOV 2024 to 26 DEC 2024

NC-3, 28 NOV 2024 to 26 DEC 2024