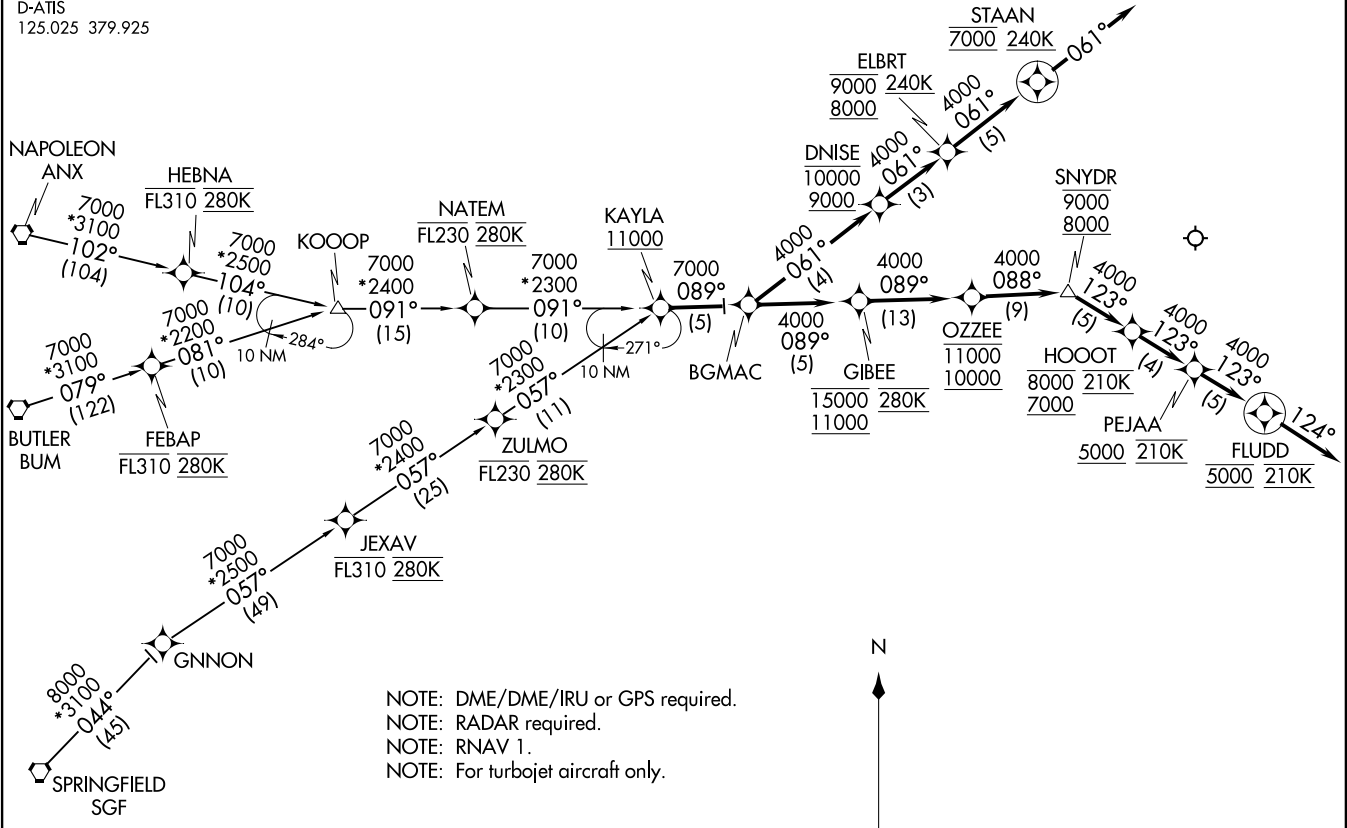


KAYLA THREE ARRIVAL (RNAV)  
(KAYLA.KAYLA3) 1200CT7

(KAYLA.KAYLA3) 18312  
KAYLA THREE ARRIVAL (RNAV)

ST LOUIS APP CON  
132.125 360.6  
D-ATIS  
125.025 379.925



A1-360 (FAA)

ST LOUIS LAMBERT INTL (STLL)  
ST LOUIS, MISSOURI

- NOTE: DME/DME/IRU or GPS required.
- NOTE: RADAR required.
- NOTE: RNAV 1.
- NOTE: For turbojet aircraft only.

(NARRATIVE ON FOLLOWING PAGE)

NOTE: Chart not to scale.

ST LOUIS, MISSOURI  
ST LOUIS LAMBERT INTL (STLL)

ARRIVAL ROUTE DESCRIPTION

BUTLER TRANSITION (BUM.KAYLA3)

KOOOP TRANSITION (KOOOP.KAYLA3)

NAPOLEON TRANSITION (ANX.KAYLA3)

SPRINGFIELD TRANSITION (SGF.KAYLA3)

From KAYLA on track 089° to BGMAC. Thence. . . .

LANDING RUNWAYS 11/12L/R: From BGMAC on track 061° to cross DNISE at or above 9000 or at or below 10000, then on track 061° to cross ELBRT at or above 8000 and at or below 9000 and at or above 240K, then on track 061° to cross STAAN at 7000 and at or above 240K, then on assigned approach procedure. If approach clearance not received by STAAN, then on track 061°, expect RADAR vectors to final approach course.

LANDING RUNWAYS 29/30L/R: From BGMAC on track 089° to cross GIBEE at or above 11000 and at or below 15000 and at 280K, then on track 089° to cross OZZEE at or above 10000 and at or below 11000, then on track 088° to cross SNYDR at or above 8000 and at or below 9000, then on track 123° to cross HOOOT at or above 7000 and at or below 8000 and at 210K, then on track 123° to cross PEJAA at or above 5000 and at 210K, then on track 123° to cross FLUDD at 5000 and at 210K. If approach clearance not received by FLUDD, then on track 124°, expect RADAR vectors to final approach course.

NC-3, 28 NOV 2024 to 26 DEC 2024

NC-3, 28 NOV 2024 to 26 DEC 2024