

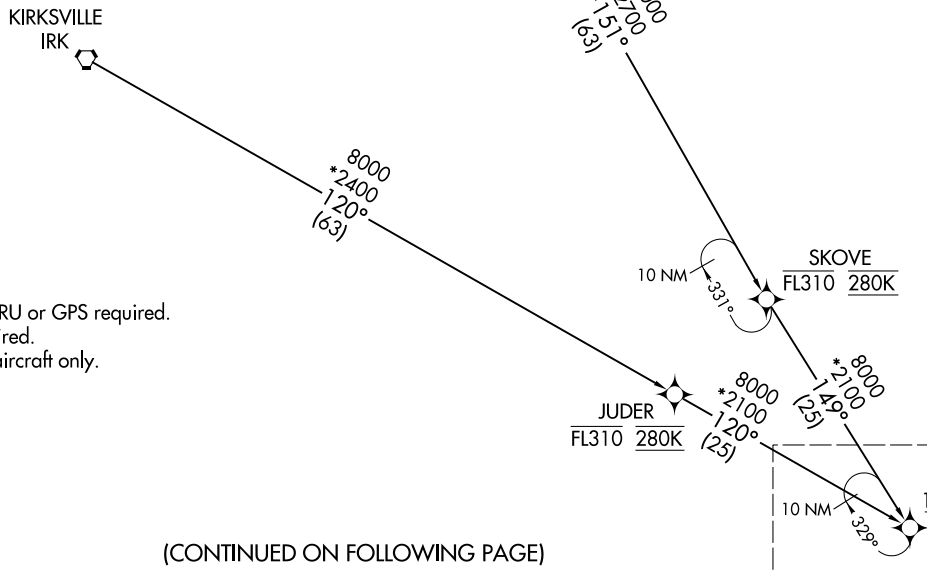
ST LOUIS APP CON
132.125 360.6
D-ATIS
125.025 379.925

GUZIK TRANSITION (GUZIK.LORLE3)
KIRKSVILLE TRANSITION (IRK.LORLE3)
SKOVE TRANSITION (SKOVE.LORLE3)

(LORLE: LORLE3) 23166
LORLE THREE ARRIVAL (RNAV)

AT-360 (FAA)
Transition Routes

ST LOUIS LAMBERT INTL (STL)
ST LOUIS, MISSOURI



NOTE: DME/DME/IRU or GPS required.
NOTE: RADAR required.
NOTE: For turbojet aircraft only.
NOTE: RNAV-1.

(CONTINUED ON FOLLOWING PAGE)

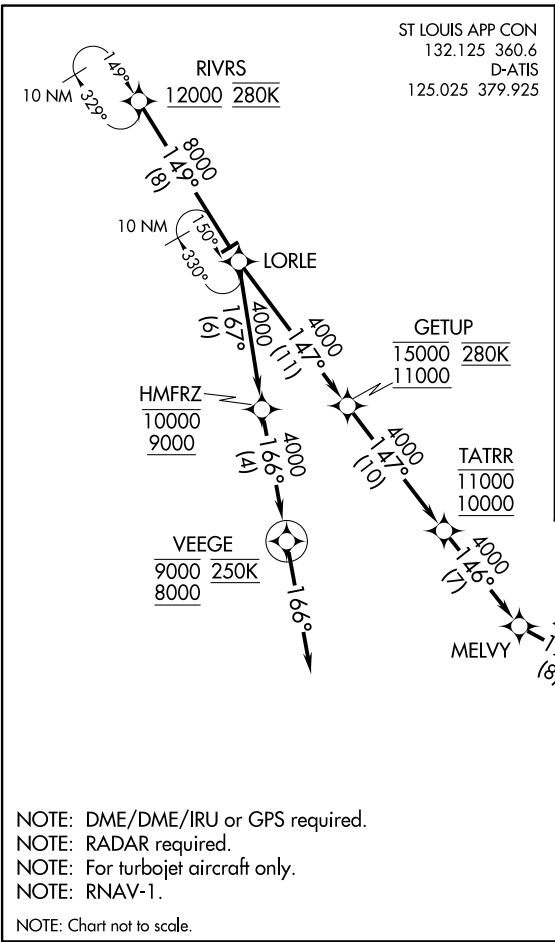
NOTE: Chart not to scale.

LORLE THREE ARRIVAL (RNAV)
(LORLE: LORLE3) 07/DEC17
Transition Routes

ST LOUIS, MISSOURI
ST LOUIS LAMBERT INTL (STL)

LORLE THREE ARRIVAL (RNAV)
(LORLE:LORLE3) 07/DEC17

ST LOUIS LAMBERT INTL (STL)
ST LOUIS, MISSOURI



ARRIVAL ROUTE DESCRIPTION

From RIVRS on track 149° to LORLE.

LANDING RUNWAYS 11/12L/R: From LORLE on track 167° to cross HMFRZ at or above 9000 and at or below 10000, then on track 166° to cross VEEGE at or above 8000 and at or below 9000 and at 250K, then via assigned instrument approach procedure. If clearance not received by VEEGE, then on track 166°, expect RADAR vectors to final approach course.

LANDING RUNWAYS 29/30L/R: From LORLE on track 147° to cross GETUP at or above 11000 and at or below 15000 and at 280K, then on track 147° to cross TATTR at or above 10000 and at or below 11000, then on track 146° to MELVY, then on track 123° to cross BRDWL at or above 8000 and at or below 9000, then on track 123° to cross ENNEE at or above 7000 and at or below 8000 and at 210K, then on track 123° to cross JYAAR at or above 5000 and at 210K, then on track 123° to cross DOBLZ at 5000 and at 210K. If approach clearance not received by DOBLZ, then on track 124°. Expect RADAR vectors to final approach course.



(LORLE:LORLE3) 23166
LORLE THREE ARRIVAL (RNAV)
AT-360 (FAA)
Arrival Routes

ST LOUIS LAMBERT INTL (STL)
ST LOUIS, MISSOURI