

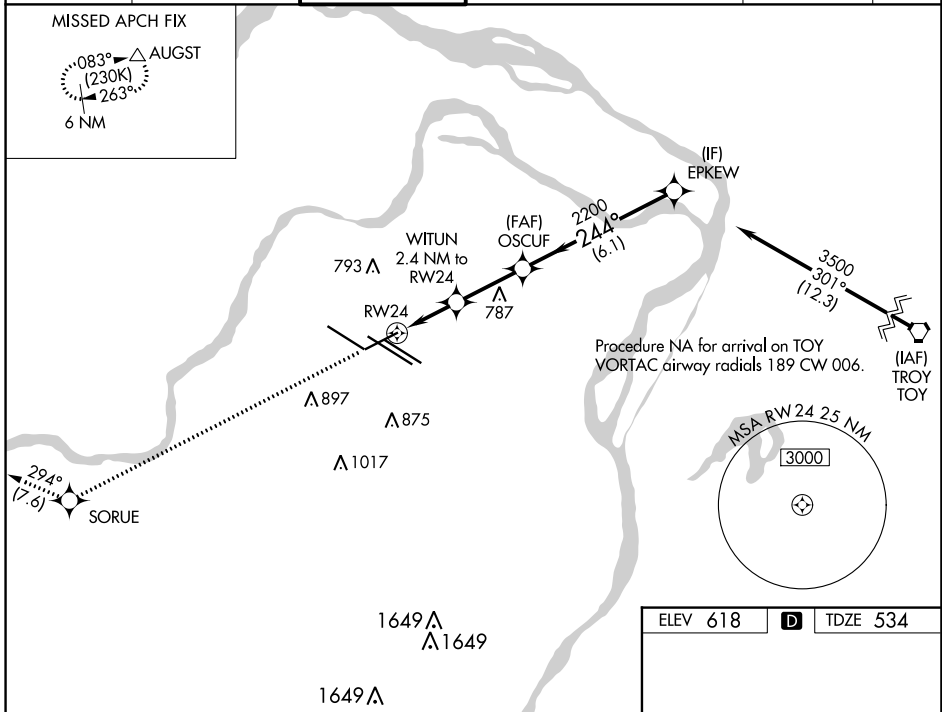
WAAS CH 87021 W24A	APP CRS 244°	Rwy Idg TDZE Apt Elev	7603 534 618
--	------------------------	-----------------------------	---

RNAV (GPS) RWY 24

ST LOUIS LAMBERT INTL (STL)

<p>▽ For uncompensated Baro-VNAV systems, LNAV/VNAV NA below -16°C (4°F) or above 54°C (130°F). Rwy 24 helicopter visibility reduction below ¼ SM NA. DME/DME RNP-0.3 NA. For inop ALS, increase LNAV/VNAV all Cats visibility to 1½ and LNAV Cats C, D and E visibility to 1½.</p>	<p>MALS</p>	<p>MISSED APPROACH: Climb to 3000 direct SORUE and on track 294° to AUGST and hold.</p>
--	-------------	---

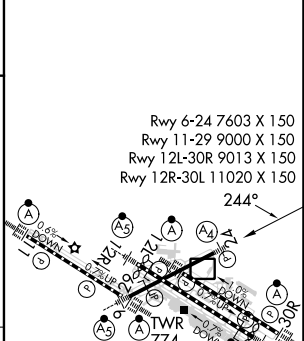
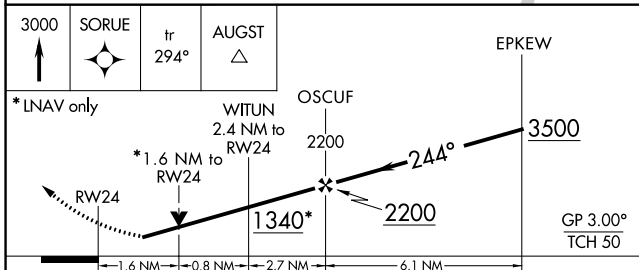
D-ATIS 125.025 379.925	ST. LOUIS APP CON 132.125 360.6	ST. LOUIS TOWER 120.05 284.6	GND CON 121.9 348.6 (Inbound) 121.65 377.175 (Outbound) 118.925 227.125 (Rwy 11/29)	CLNC DEL 119.5 363.1	CPDLC
--	---	--	---	--------------------------------	-------



NC-3, 28 NOV 2024 to 26 DEC 2024

NC-3, 28 NOV 2024 to 26 DEC 2024

ELEV 618	D	TDZE 534
----------	----------	----------



CATEGORY	A	B	C	D	E
LPV DA		734/40	200 (200-¾)		
LNAV/VNAV DA		931/50	397 (400-1)		
LNAV MDA	1080/40	546 (500-¾)	1080-1¾	546 (500-1¾)	

HIRL all Rwys
TDZ/CL Rwwys 11, 12L, 12R, 29, and 30R