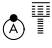


APP CRS	Rwy Idg	<b>8956</b>
<b>123°</b>	TDZE	<b>541</b>
	Apt Elev	<b>618</b>

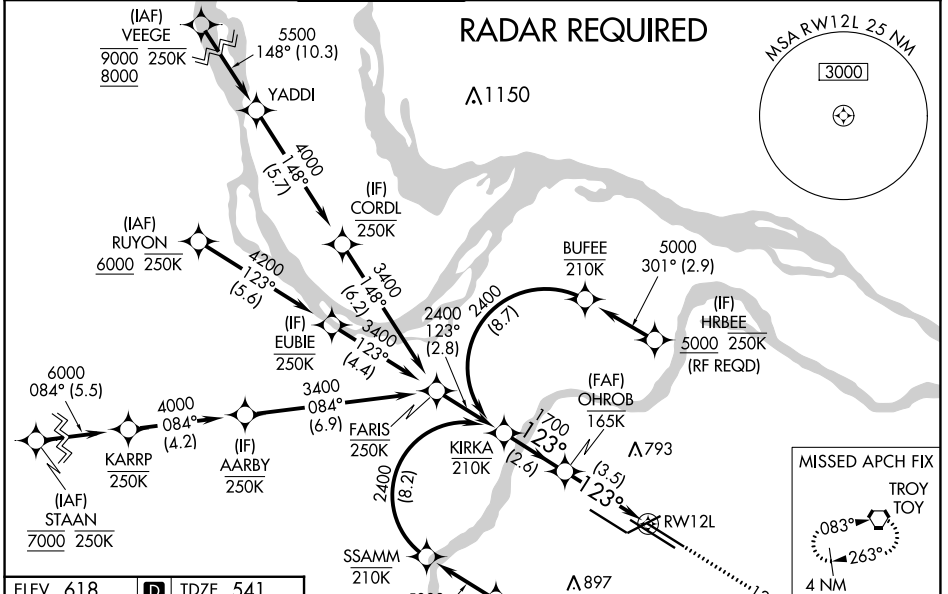
# RNAV (RNP) Z RWY 12L

ST LOUIS LAMBERT INTL (STL)

**▼** For uncompensated Baro-VNAV systems, procedure NA below -16°C (4°F) or above 54°C (130°F). GPS required. For inop ALS, increase RNP 0.30 all Cats visibility to 1 3/4 SM. Simultaneous approach authorized with Rwy 11, except for arrivals at RIRPP and HRBEE. Use of FD or AP required during simultaneous operations.

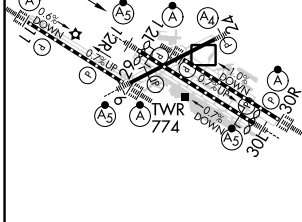
**ALSF-2**  
  
**MISSED APPROACH:** Climb to 3000 on track 123° to ODITY and on track 071° to TOY VORTAC and hold.

D-ATIS <b>125.025</b> <b>379.925</b>	ST. LOUIS APP CON <b>132.125 360.6</b>	ST. LOUIS TOWER <b>120.05 284.6</b>	GND CON <b>121.9 348.6</b> (Inbound) <b>121.65 377.175</b> (Outbound) <b>118.925 227.125</b> (Rwy 11/29)	CLNC DEL <b>119.5 363.1</b>	CPDLC
--	---	--	---	--------------------------------	-------



ELEV 618	<b>D</b>	TDZE 541
----------	----------	----------

Rwy 6-24 7603 X 150  
 Rwy 11-29 9000 X 150  
 Rwy 12L-30R 9013 X 150  
 Rwy 12R-30L 11020 X 150



HIRL all Rwys  
 TDZ/CL Rwys 11, 12L, 12R, 29, and 30R

KIRKA	OHROB	3000	ODITY	tr 071°	TOY
2400	1700	↑			
		tr 123°			
See planview for multiple IF locations.					
GP 3.00°					
TCH 54					
	2.6 NM		3.5 NM		
CATEGORY	A	B	C	D	
RNP 0.30 DA	1043/60		502 (500-1 1/4)		
<b>AUTHORIZATION REQUIRED</b>					

NC-3, 28 NOV 2024 to 26 DEC 2024

NC-3, 28 NOV 2024 to 26 DEC 2024