

WAAS CH <b>78121</b> <b>W12B</b>	APP CRS <b>123°</b>	Rwy ldg <b>10553</b> TDZE <b>540</b> Apt Elev <b>618</b>
--	------------------------	--

# RNAV (GPS) Y RWY 12R

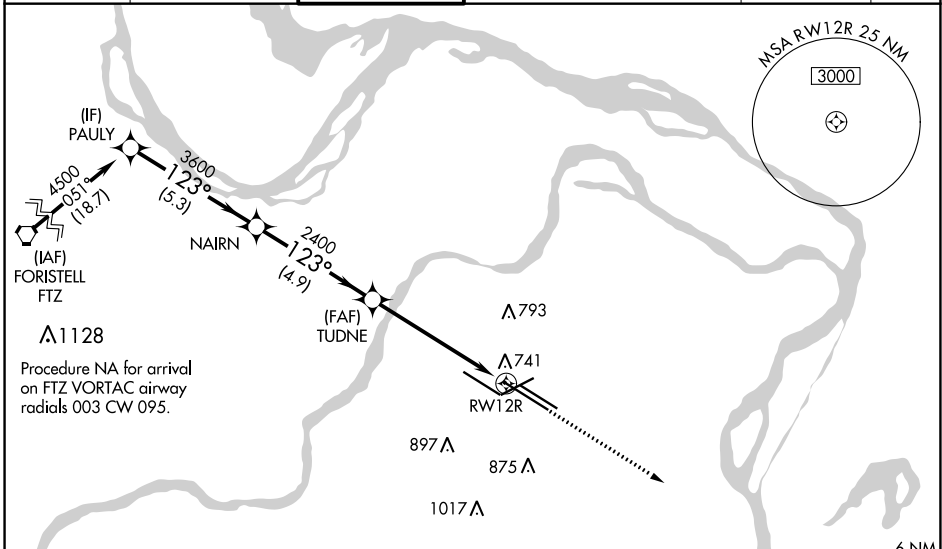
ST LOUIS LAMBERT INTL (STL)

**▽** For uncompensated Baro-VNAV systems, LNAV/VNAV NA below -16°C (4°F) or above 54°C (130°F). DME/DME RNP-0.3 NA. For inop ALS, increase LPV Cat E visibility to RVR 4000, LNAV Cats A/B visibility to RVR 5000, and LNAV Cat E visibility to 1½ SM. Inop table does not apply to LNAV/VNAV. Simultaneous approach authorized with Rwy 11. LNAV procedure NA during simultaneous operations. Use of FD or AP required during simultaneous operations.

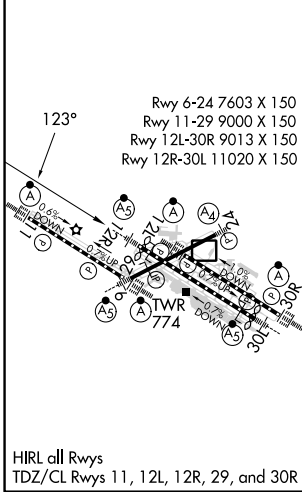


**MISSED APPROACH:**  
Climb to 5000 direct FONTI and hold, continue climb-in-hold to 5000.

D-ATIS <b>125.025</b> <b>379.925</b>	ST. LOUIS APP CON <b>132.125 360.6</b>	ST. LOUIS TOWER <b>118.5 257.7</b>	GND CON <b>121.9 348.6</b> (Inbound) <b>121.65 377.175</b> (Outbound) <b>118.925 227.125</b> (Rwy 11/29)	CLNC DEL <b>119.5 363.1</b>	CPDLC
--	---	---------------------------------------	---	--------------------------------	-------



ELEV 618	<b>D</b>	TDZE 540
----------	----------	----------



	PAULY	NAIRN	TUDNE	RWY 12R		
	4500	3600	2400	2400		
	* 1.3 NM to RWY 12R					
	* LNAV only					
	GP 3.00° TCH 54					
	5.3 NM    4.9 NM    4.4 NM    1.3 NM					
CATEGORY	A	B	C	D	E	
LPV	DA	740/18		200 (200-½)		
LNAV/VNAV	DA	1103-2		563 (500-2)		
LNAV MDA	1000/40		460 (400-¾)		1000/50	460 (400-1)

NC-3, 28 NOV 2024 to 26 DEC 2024

NC-3, 28 NOV 2024 to 26 DEC 2024