

ST. LOUIS, MISSOURI

TACAN RWY 12R

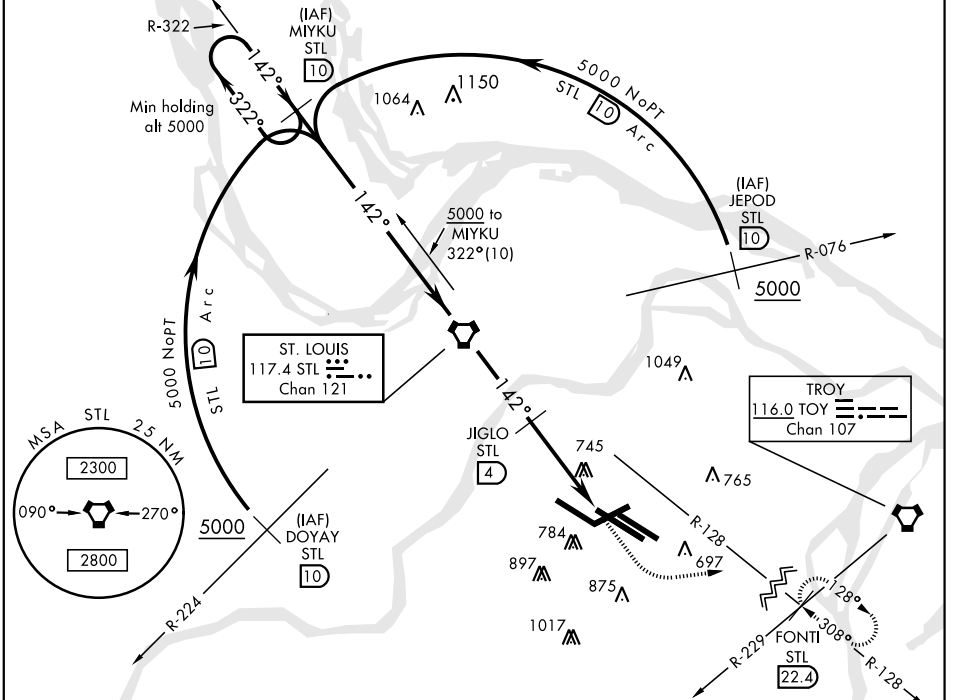
VORTAC STL 117.4 Chan 121	APCH CRS 142°	Rwy Ldg 10,552 TDZE 540 Arprt Elev 618
---------------------------------	------------------	--

AL-360 [USAF]

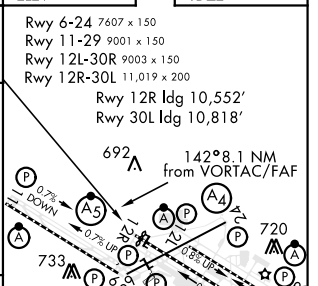
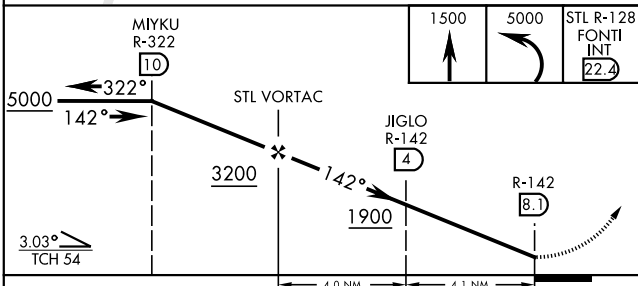
ST. LOUIS LAMBERT INTL (KSTL)

<p>▼ * Inoperative table does not apply.</p> <p>▲ NA Visibility reduction by helicopters NA</p>	<p>MALSR</p>	<p>MISSED APPROACH: Climb to 1500 then climbing left turn to 5000 intercept STL R-128 to FONTI INT/STL 22.4 DME and hold, continue climb in hold.</p>
---	--------------	---

<p>ATIS 125.025 379.925</p>	<p>ST. LOUIS APP CON 121.02 338.25</p>	<p>N 120.05 284.6</p>	<p>ST. LOUIS TOWER 132.475 239.275</p>	<p>S 118.5 257.7</p>	<p>GND CON (Inlbd) 121.9 348.6 (Outlbd) 121.65 377.175 (West) 118.925 227.125</p>	<p>CLNC DEL 119.5 363.1</p>
---------------------------------	--	-------------------------------	--	------------------------------	---	---------------------------------



EMERG SAFE ALT 100 NM 3500	ELEV 618	TDZE 540
----------------------------	----------	----------



CATEGORY	A	B	C	D	E
S-12R *	1060/50	520 (500-1)	1060-1½ 520(500-1½)	1060-1¾	520 (500-1¾)
CIRCLING	NOT AUTHORIZED				

HIRL all Rwy	REIL Rwy 12L
TDZL/CL Rwy 11-29, 12L-30R, and 12R	

ST. LOUIS, MISSOURI 38°45'N-90°22'W ST. LOUIS LAMBERT INTL (KSTL)

Amdt 1 18200

TACAN RWY 12R

NC-3, 28 NOV 2024 TO 26 DEC 2024

NC-3, 28 NOV 2024 TO 26 DEC 2024