

LOC/DME I-SLE 110.3 Chan 40	APP CRS 313°	Rwy Idg TDZE 213 Apt Elev 213	5811
------------------------------------------	------------------------	---------------------------------------------------	-------------

ILS or LOC Z RWY 31

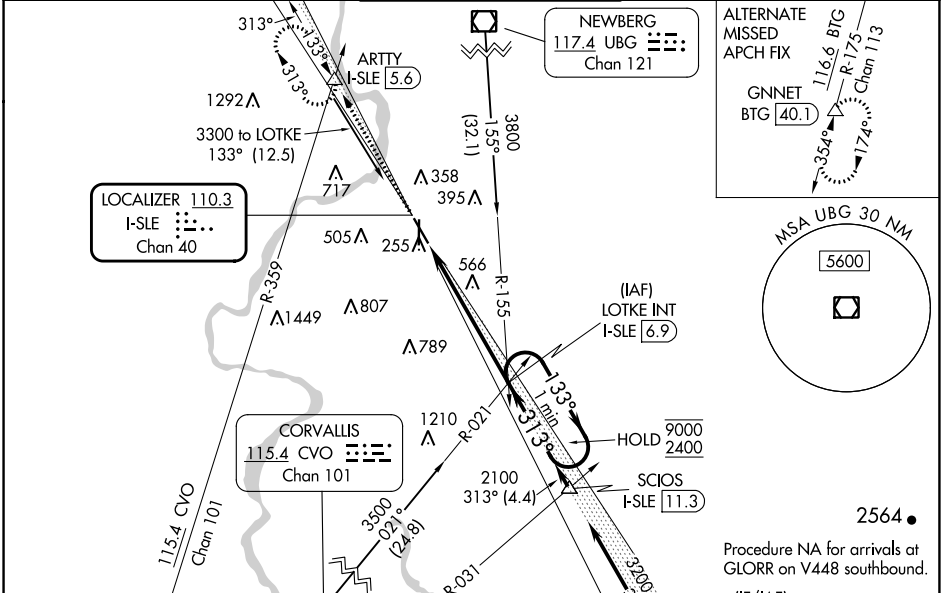
MCNARY FLD (SLE)

RADAR required for procedure entry at ARTY.

⚠ Circling Rwy 16, 34 NA at night. For inop ALS, increase S-LOC 31 Cat C/D visibility to 2½ SM.
*RVR 1800 authorized with use of FD or AP or HUD to DA (NA when using Mc Minnville altimeter setting).

MALSR
MISSED APPROACH: Climb to 4000 on I-SLE localizer NW course (313°) to ARTY INT/I-SLE 5.6 DME and hold, continue climb-in-hold to 4000.

ATIS 124.55	SEATTLE CENTER 125.8 291.7	SALEM TOWER ★ 119.1 (CTAF) 0 257.2	GND CON 121.9	UNICOM 122.95
-----------------------	--------------------------------------	----------------------------------------------	-------------------------	-------------------------



ELEV 213 TDZE 213

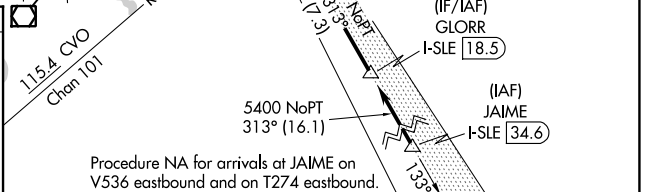
REIL Rwy 13, 16 and 34
MIRL Rwy 16-34
HIRL Rwy 13-31

TWR 270

FAF to MAP 5.8 NM

Knots	60	90	120	150	180
Min:Sec	5:48	3:52	2:54	2:19	1:56

Ⓢ CIRCLING



ARTY I-SLE NW crs (313°)	ARTY I-SLE (313°)	LOTKE INT I-SLE 6.9	One Minute Holding Pattern
2100	2100	2100	9000
313°	313°	313°	133°
2.4 NM	3.4 NM		
			GS 3.00° TCH 42

CATEGORY	A	B	C	D
S-ILS 31*	413/24 200 (200-½)			
S-LOC 31	1020/24 807 (900-½)	1020/40 807 (900-¾)	1020-1⅞ 807 (900-1⅞)	807 (900-1⅞)
Ⓢ CIRCLING	1020-1 807 (900-1)	1020-1¼ 807 (900-1¼)	1060-2½ 847 (900-2½)	1260-3 1047 (1100-3)

NW-1, 28 NOV 2024 to 26 DEC 2024

NW-1, 28 NOV 2024 to 26 DEC 2024