
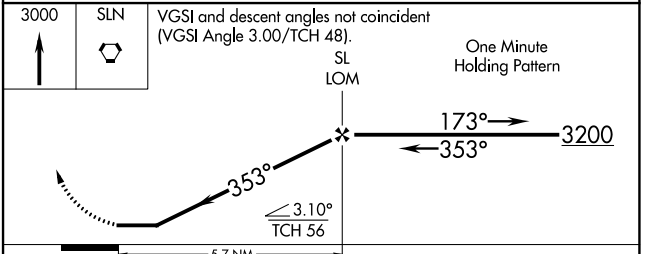
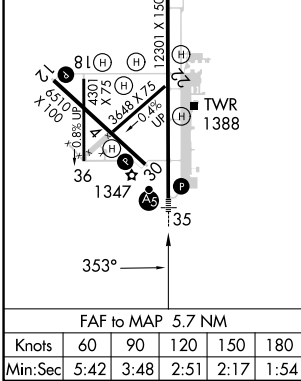
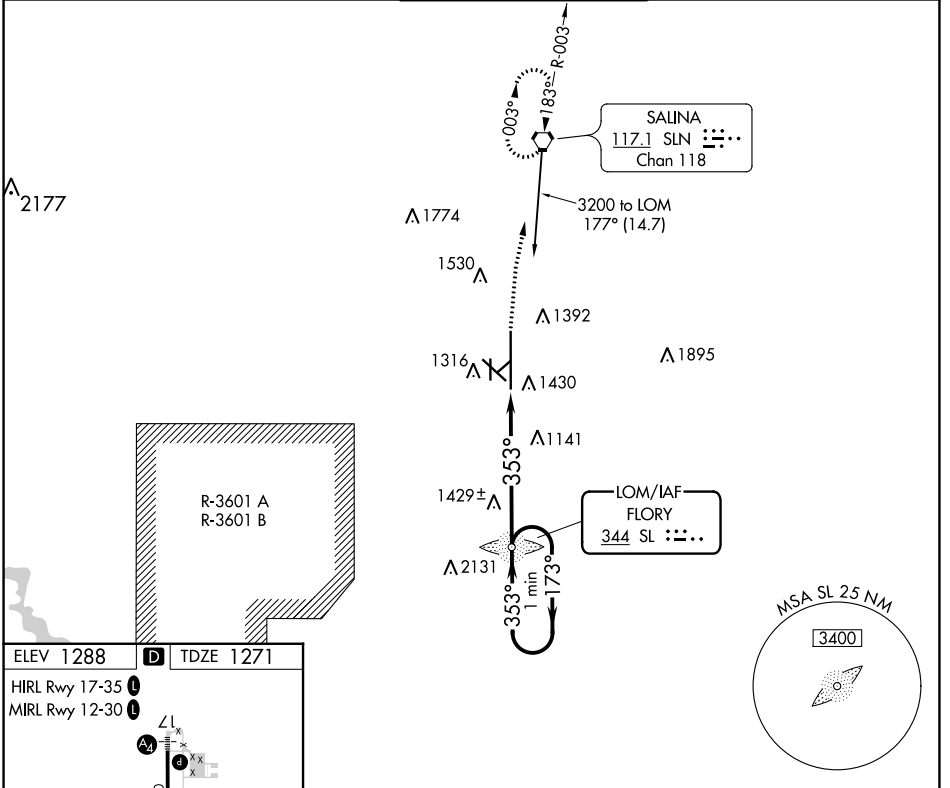


LOM SL 344	APP CRS 353°	Rwy Idg TDZE Apt Elev	12300 1271 1288
----------------------	------------------------	-----------------------------	--

NDB RWY 35

SALINA RGNL (SLN)

▼ ▲ Cat D Circling NA southwest of runway 12-30. For inop ALS, increase S-35 Cats A/B visibility to 1 SM and Cats C/D to 1½ SM.	MALSR 	MISSED APPROACH: Climb to 3000 direct SLN VORTAC and hold.
	ATIS 120.15	KANSAS CITY CENTER 134.9 363.2
GND CON 121.9 360.8		UNICOM 122.95



CATEGORY	A	B	C	D
S-35	1760-¾ 489 (500-¾)	489 (500-¾)	1760-1 489 (500-1)	1760-1¼ 489 (500-1¼)
CIRCLING	1820-1 532 (600-1)	1840-1 552 (600-1)	1860-1½ 572 (600-1½)	1860-2 572 (600-2)

SALINA, KANSAS
Amdt 17C 20MAY21

38°47'N-97°39'W

SALINA RGNL (SLN)
NDB RWY 35

NC-2, 28 NOV 2024 to 26 DEC 2024

NC-2, 28 NOV 2024 to 26 DEC 2024