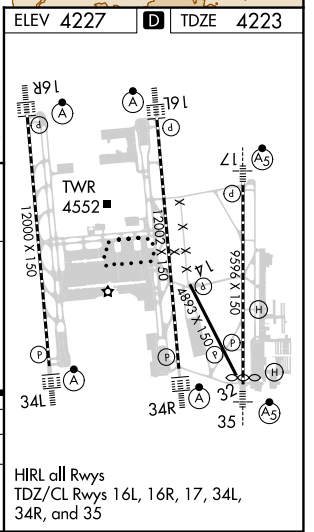
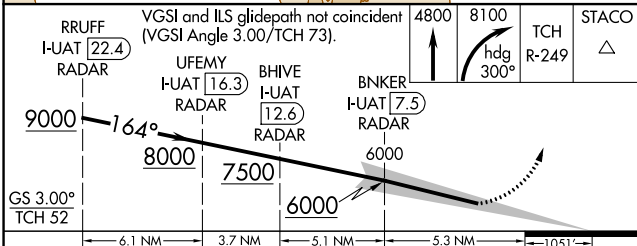
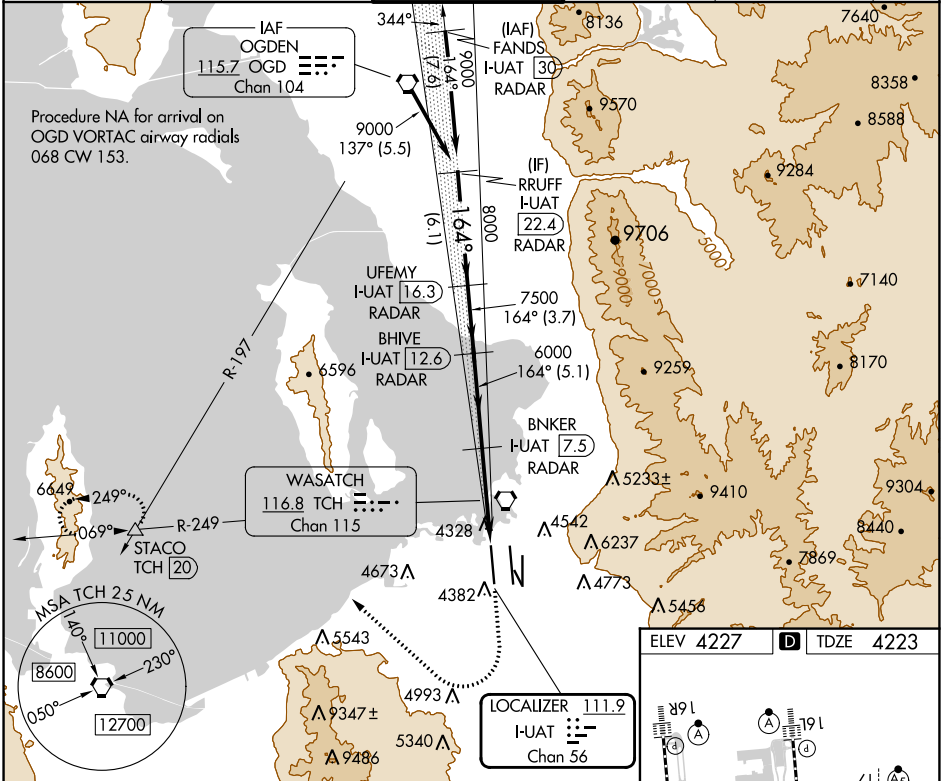


LOC/DME I-UAT <b>111.9</b> Chan 56	APP CRS <b>164°</b>	Rwy ldg <b>12000</b>	TDZE <b>4223</b>	Apt Elev <b>4227</b>
--	------------------------	-------------------------	---------------------	-------------------------

# ILS RWY 16R (SA CAT I)

SALT LAKE CITY INTL (SLC)

DME or RADAR required.		ALSIF-2	MISSED APPROACH: Climb to 4800 then climbing right turn to 8100 on heading 300° and on TCH VORTAC R-249 to STACO INT/TCH 20 DME and hold.		
▼ Simultaneous approach authorized. Requires specific OPSPEC, MSPEC, or LOA approval and use of HUD to DH.		(A)			
D-ATIS <b>124.75 125.625</b>	SALT LAKE CITY APP CON <b>125.7 284.6</b>	SALT LAKE CITY TOWER <b>132.65 336.4</b>	GND CON <b>123.775 348.6</b>	CLNC DEL <b>127.3 379.975</b>	CPDLC



RRUFF I-UAT 22.4 RADAR	UFEY I-UAT 16.3 RADAR	BHIVE I-UAT 12.6 RADAR	BNKER I-UAT 7.5 RADAR	STACO TCH 20
VGS1 and ILS glidepath not coincident (VGS1 Angle 3.00/TCH 73).				
GS 3.00° TCH 52				
CATEGORY	A	B	C	D
S-ILS 16R	RA 157/14 150 DA 4373			
<b>SA CATEGORY I ILS - SPECIAL AIRCREW &amp; AIRCRAFT CERTIFICATION REQUIRED</b>				