

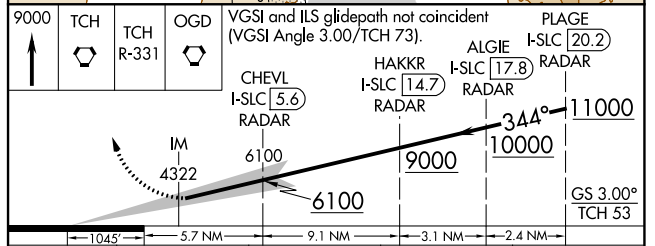
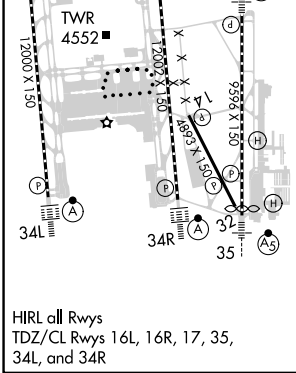
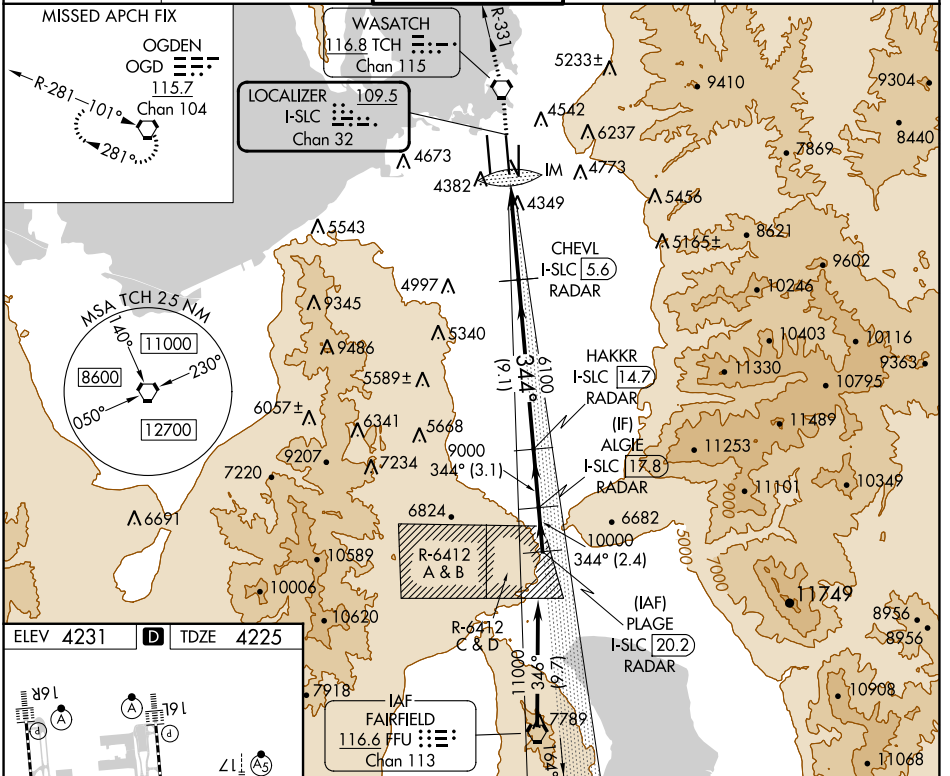
LOC/DME I-SLC 109.5 Chan 32	APP CRS 344°	Rwy Idg 12002 TDZE 4225 Apt Elev 4231
---	------------------------	--

ILS RWY 34R (CAT II & III)

SALT LAKE CITY INTL (SLC)

<p>Simultaneous approach authorized. CAT II: RVR 1000 authorized with specific OPSPEC, MSPEC, or LOA approval and use of autoland or HUD to touchdown.</p>	ALSIF-2 A	MISSED APPROACH: Climb to 9000 direct TCH VORTAC and on TCH VORTAC R-331 to OGD VORTAC and hold.

D-ATIS 124.75 125.625	SALT LAKE CITY APP CON 125.7 284.6	SALT LAKE CITY TOWER 119.05 257.8	GND CON 123.775 348.6	CLNC DEL 127.3 379.975	CPDLC
---------------------------------	--	---	---------------------------------	----------------------------------	-------



CATEGORY	A	B	C	D
S-ILS 34R	CAT II RA 100/12 100 DA 4325			
S-ILS 34R	CAT III RVR 03			

CATEGORY II & III ILS - SPECIAL AIRCREW & AIRCRAFT CERTIFICATION REQUIRED

SW-4, 28 NOV 2024 to 26 DEC 2024

SW-4, 28 NOV 2024 to 26 DEC 2024