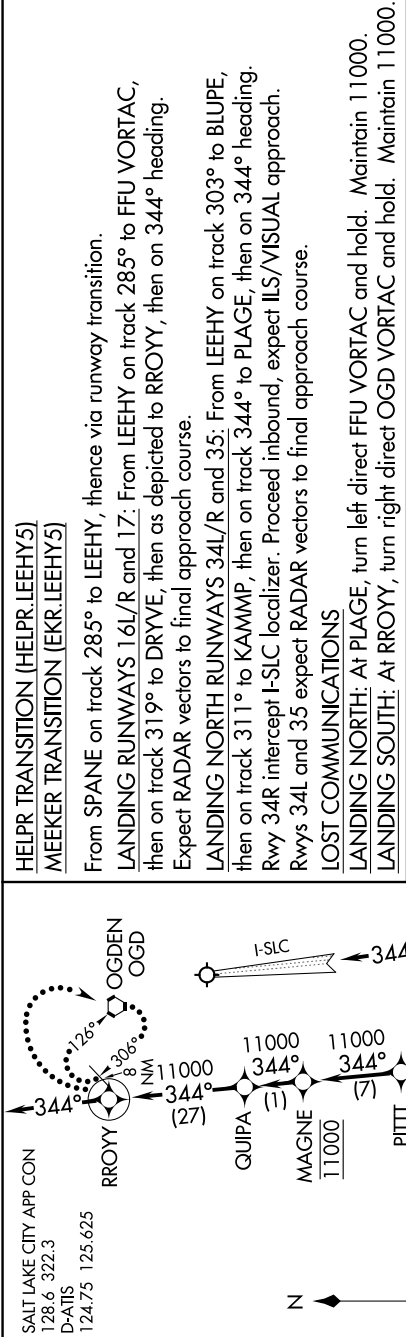


# LEEHY FIVE ARRIVAL (RNAV)

AL-365 (FAA)

SALT LAKE CITY INTL (SLC)  
SALT LAKE CITY, UTAH

SW-4, 28 NOV 2024 to 26 DEC 2024



**HELP Transition (HELP: LEEHY5)**  
**MEEKER Transition (EKR: LEEHY5)**

From SPANE on track 285° to LEEHY, thence via runway transition.  
**LANDING RUNWAYS 16L/R and 17:** From LEEHY on track 285° to FFU VORTAC, then on track 319° to DRYVE, then as depicted to RROYY, then on 344° heading. Expect RADAR vectors to final approach course.

**LANDING NORTH RUNWAYS 34L/R and 35:** From LEEHY on track 303° to BLUPE, then on track 311° to KAMMP, then on track 344° to PLAGE, then on 344° heading. Rwy 34R intercept I-SLC localizer. Proceed inbound, expect ILS/VISUAL approach. Rwys 34L and 35 expect RADAR vectors to final approach course.

**LOST COMMUNICATIONS**  
**LANDING NORTH:** At PLAGE, turn left direct FFU VORTAC and hold. Maintain 11000.  
**LANDING SOUTH:** At RROYY, turn right direct OGD VORTAC and hold. Maintain 11000.

**NOTE:** EKR Transition landing north: For non-GPS equipped aircraft PUC and DTA DMEs must be operational.  
 Landing south: For non-GPS equipped aircraft DTA, TCH, PUC, and PVU DMEs must be operational.  
**NOTE:** HELP Transition landing north: For non-GPS equipped aircraft FFU DME must be operational.  
 Landing south: For non-GPS equipped aircraft TCH and PVU DMEs must be operational.

**NOTE:** RADAR required.  
**NOTE:** RNAV 1  
**NOTE:** DME/DME/IRU or GPS required.  
**NOTE:** Turbojet aircraft only.

Landing north (Rwys 34L/R, 35):  
Expect 16000

Landing south (Rwys 16L/R, 17):  
Expect FL190

**NOTE:** Chart not to scale.

SW-4, 28 NOV 2024 to 26 DEC 2024