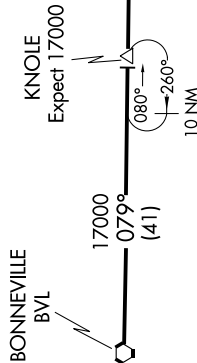


SW-4, 28 NOV 2024 to 26 DEC 2024

SALT LAKE CITY APP CON
128.1 307.05
D-ATIS
124.75 125.625



NOTE: Chart not to scale.

ARRIVAL ROUTE DESCRIPTION

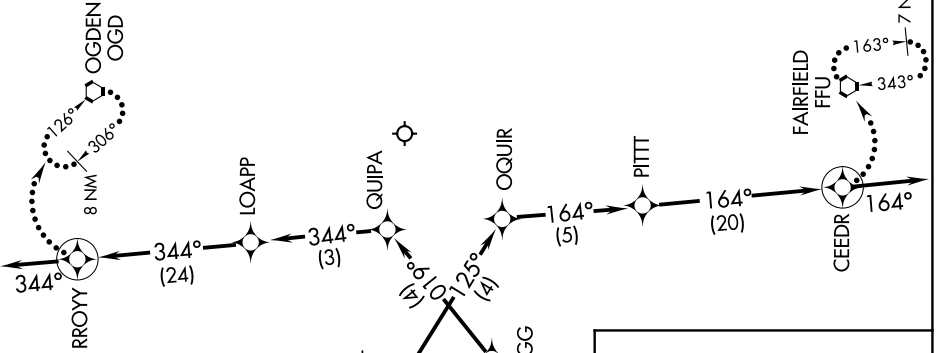
From BVL VORTAC on track 079° to KNOLE, then on track 080° to WAATS.

LANDING NORTH RUNWAYS 34L/R and 35: From WAATS on track 067° to RAAACE, thence as depicted to CEEDR, then on heading 164° . Expect RADAR vectors to final approach course.

LANDING SOUTH RUNWAYS 16L/R and 17: From WAATS on track 081° to DUGGY, thence as depicted to RROYY, then on heading 344° . Expect RADAR vectors to final approach course.

LOST COMMUNICATIONS

- LANDING NORTH: At CEEDR, turn left direct to FFU VORTAC and hold. Maintain 12000.
- LANDING SOUTH: At RROYY, turn right direct to OGD VORTAC and hold. Maintain 12000.



- NOTE: RADAR required.
- NOTE: RNAV 1.
- NOTE: DME/DME/IRU or GPS required.
- NOTE: Turbojet aircraft only.
- NOTE: For non-GPS equipped aircraft LCU, TCH and OGD DMEs must be operational.

SW-4, 28 NOV 2024 to 26 DEC 2024