

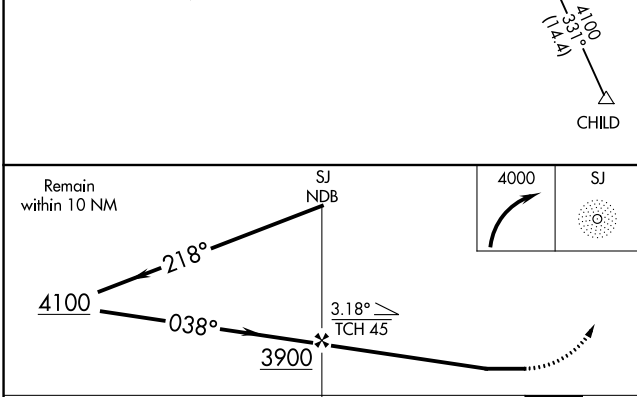
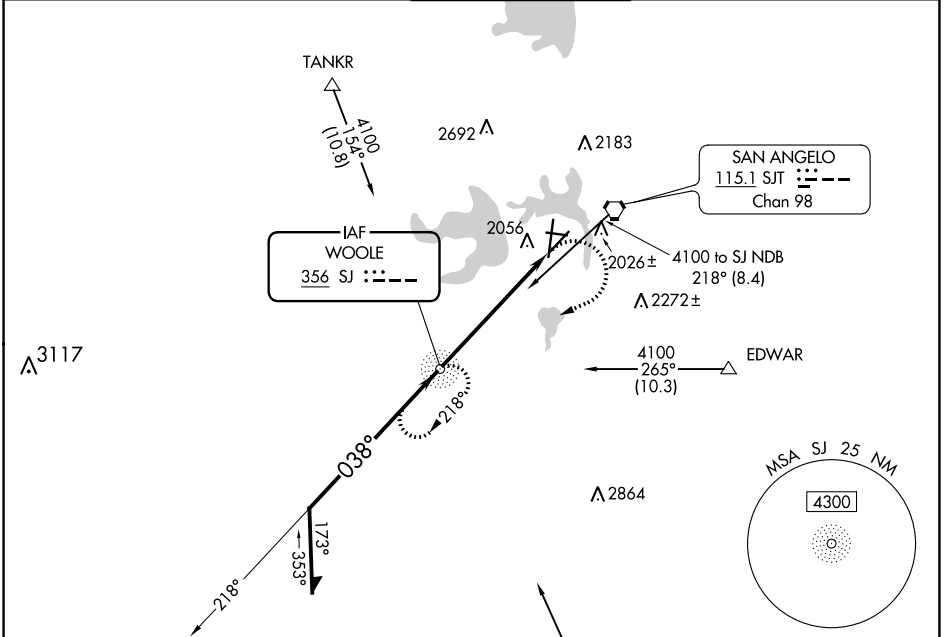
NDB SJ 356	APP CRS 038°	Rwy Idg TDZE Apt Elev	5940 1917 1919
----------------------	------------------------	-----------------------------	---

NDB RWY 3

SAN ANGELO RGNL/MATHIS FLD (SJT)

 For inop ALS, increase Cat A/B visibility to RVR 5500, and Cat C/D to 2 SM.	 MALSR	MISSED APPROACH: Climbing right turn to 4000 direct SJ NDB and hold.		

ATIS 128.45 319.0	SAN ANGELO APP CON ★ 125.35 354.1	MATHIS TOWER ★ 118.3 (CTAF) 284.7	GND CON 121.9 348.6	UNICOM 122.95
-----------------------------	---	---	-------------------------------	-------------------------



ELEV 1919	TDZE 1917
MIRL Rwy 9-27 and 18-36	HIRL Rwy 3-21
REIL Rwy 18	

Detailed arrival diagram showing runway 36, 36L, 36R, 81, and 27L. Key features include:

- Runway 36: 0.3% DOWN, 0.3% UP
- Runway 81: 0.3% UP
- Runway 27L: 0.4% UP
- Altitudes: 1990 MSL (TWR), 4406 X 75, 8054 X 150, 5940 X 150
- Distances: 5.7 NM from FAF

CATEGORY	A	B	C	D
S-3	2640/40	723 (800-¾)	2640-1½	723 (800-1%)
CIRCLING	2640-1	721 (800-1)	2640-2	2700-2½
			781 (800-2½)	

Knots	60	90	120	150	180
Min:Sec	5:42	3:48	2:51	2:17	1:54

SC-3, 28 NOV 2024 to 26 DEC 2024

SC-3, 28 NOV 2024 to 26 DEC 2024