

(CRVZA.CRVZA1) 25JAN24

CRVZA ONE ARRIVAL (RNAV) Transition Routes

SAN ANTONIO, TEXAS

SAN ANTONIO APP CON
125.7 290.225
BAZ ATIS
119.325
KRND ATIS ★
290.525
KSKF ATIS
120.45 273.5
SAT D-ATIS
118.9
SSF ATIS
128.8

See following page
for Arrival Routes

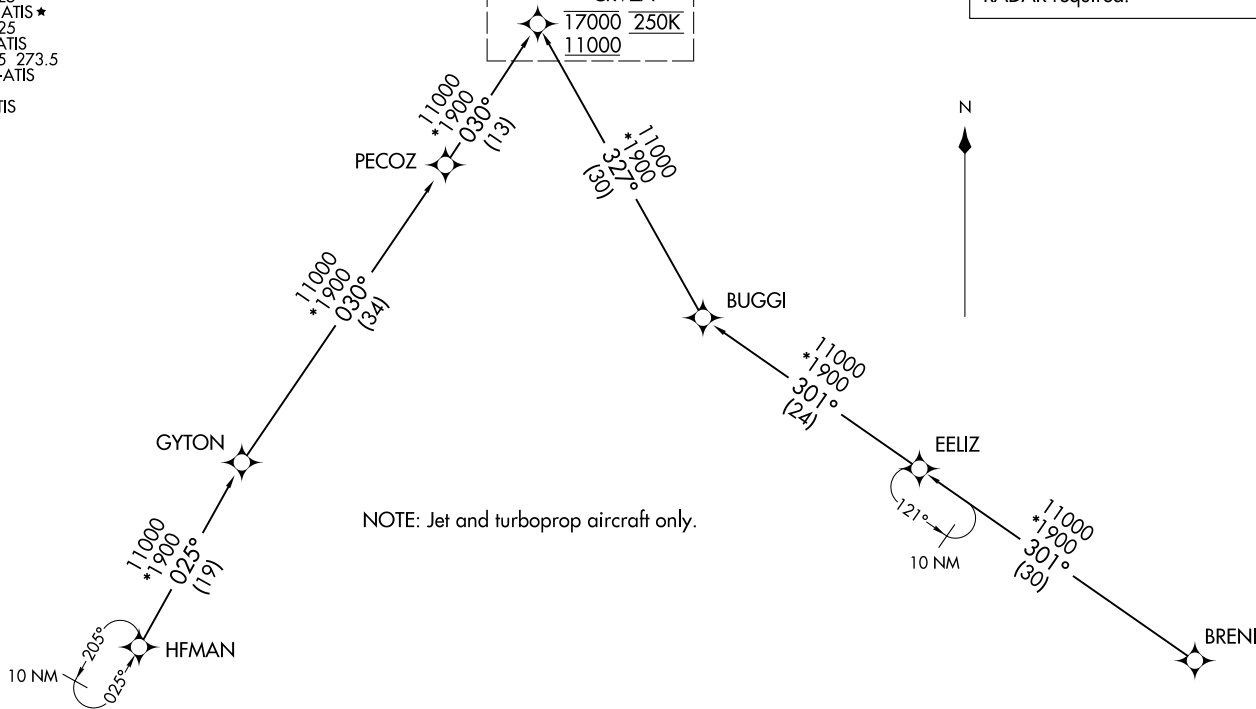
CRVZA
17000 250K
11000

RNAV 1 - DME/DME/IRU or GPS.
RADAR required.

(CRVZA.CRVZA1) 24025

AL-369 (FAA)
CRVZA ONE ARRIVAL (RNAV) Transition Routes

SAN ANTONIO, TEXAS



NOTE: Jet and turboprop aircraft only.

BRENI TRANSITION (BRENI.CRVZA1)
EELIZ TRANSITION (EELIZ.CRVZA1)
HFMAN TRANSITION (HFMAN.CRVZA1)

(CONTINUED ON FOLLOWING PAGE)

NOTE: Chart not to scale.

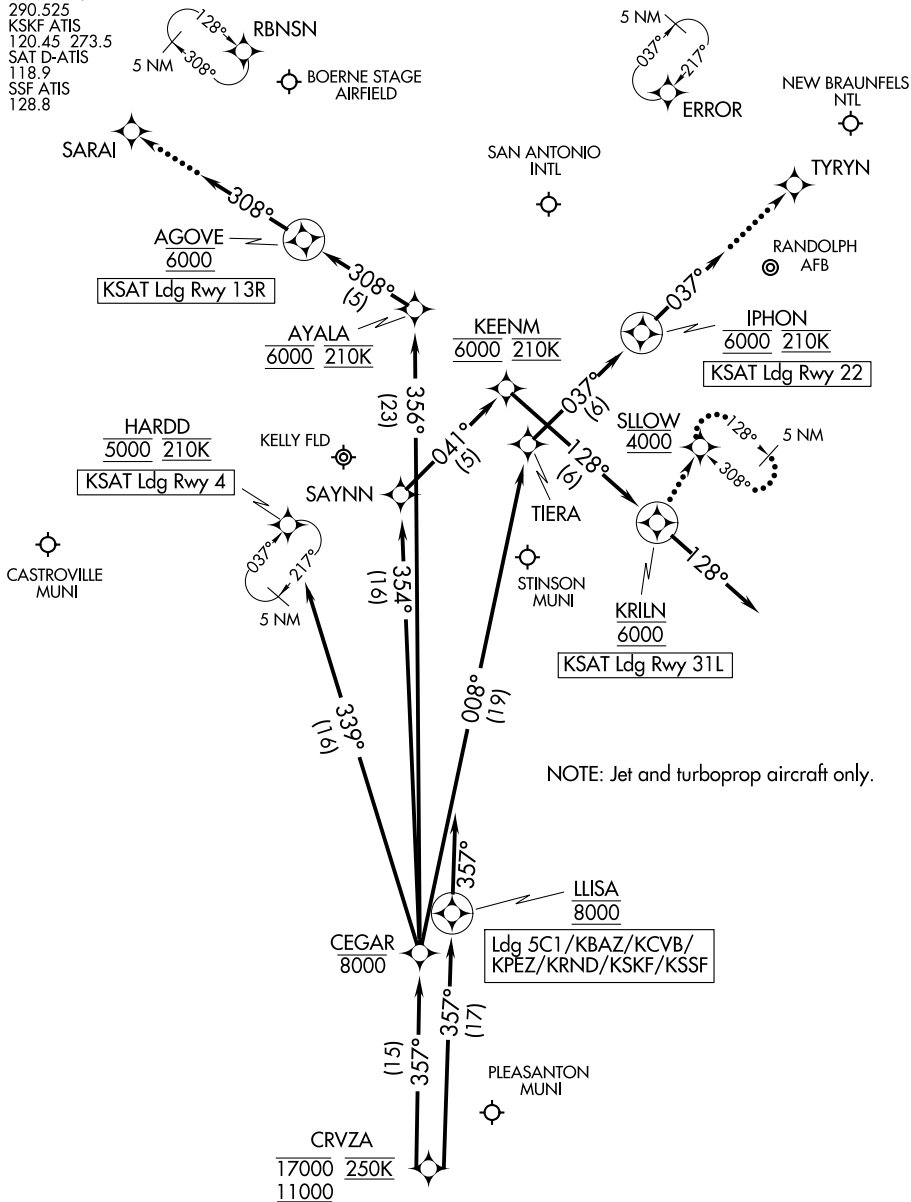
CRVZA ONE ARRIVAL (RNAV) Arrival Routes

SAN ANTONIO, TEXAS

SAN ANTONIO APP CON
 125.7 290.225
 BAZ ATIS
 119.325
 KRND ATIS ★
 290.525
 KSKF ATIS
 120.45 273.5
 SAT D-ATIS
 118.9
 SSF ATIS
 128.8

RNAV 1 - DME/DME/IRU or GPS.

RADAR required.



NOTE: Jet and turboprop aircraft only.

NOTE: Chart not to scale.

(CONTINUED ON FOLLOWING PAGE)

SC-3, 28 NOV 2024 to 26 DEC 2024

SC-3, 28 NOV 2024 to 26 DEC 2024

ARRIVAL ROUTE DESCRIPTION

SAN ANTONIO INTL (KSAT): From CRVZA on track 357° to cross CEGAR at or below 8000.

LANDING KSAT RUNWAY 4: From CEGAR on track 339° to cross HARDD at 5000 and at 210K. Expect ILS or LOC RWY 4 approach.

LANDING KSAT RUNWAY 13R: From CEGAR on track 356° to cross AYALA at 6000 and at 210K, then on track 308° to cross AGOVE at 6000, then on track 308°. Expect RADAR vectors to final approach course.

LANDING KSAT RUNWAY 22: From CEGAR on track 008° to TIERA, then on track 037° to cross IPHON at 6000 and at 210K, then on track 037°. Expect RADAR vectors to final approach course.

LANDING KSAT RUNWAY 31L: From CEGAR on track 354° to SAYNN, then on track 041° to cross KEENM at 6000 and at 210K, then on track 128° to cross KRILN at 6000, then on track 128°. Expect RADAR vectors to final approach course.

LANDING KSKF/KBAZ/KCVB/KSSF/KPEZ/5C1/KRND: From CRVZA on track 357° to cross LLISA at 8000, then on track 357°. Expect RADAR vectors to final approach course.

LOST COMMUNICATIONS

KSAT RUNWAY 13R: After AGOVE proceed to SARAI, then on ILS or LOC RWY 13R or RNAV (GPS) Y RWY 13R approach.

KSAT RUNWAY 22: After IPHON proceed to TYRYN, then on RNAV (GPS) Y RWY 22 approach.

KSAT RUNWAY 31L: After KRILN proceed to SLOW at 4000 and hold.

SC-3, 28 NOV 2024 to 26 DEC 2024

SC-3, 28 NOV 2024 to 26 DEC 2024