

LOC/DME I-ANT 110.9 Chan 46	APP CRS 128°	Rwy 13R Idg 8502 TDZE 809 Apt Elev 809
---	------------------------	---

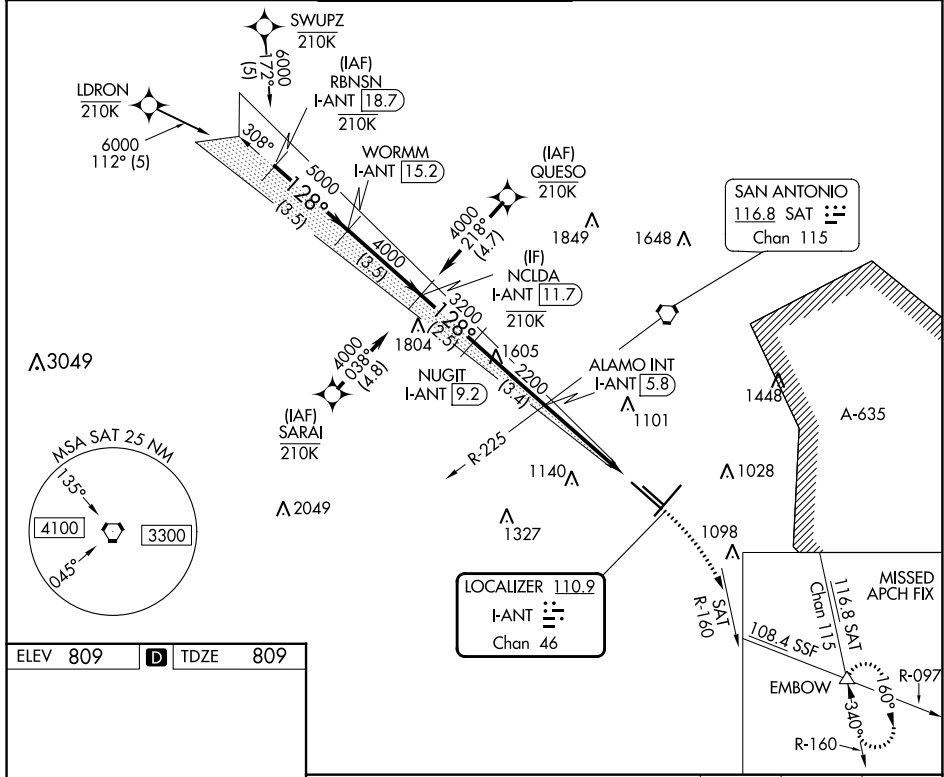
ILS RWY 13R (CAT II)

SAN ANTONIO INTL (SAT)

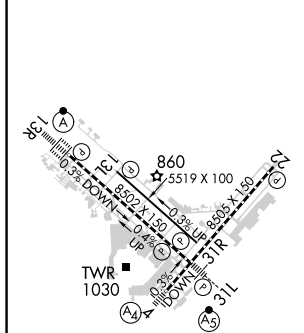
RNP APCH-GPS. From LDRON, SWUPZ, SARAI, QUESO.		
RNAV 1-GPS or RADAR required for procedure entry. DME required.		

ALSF-2 A	MISSED APPROACH: Climb to 3100 on heading 128° and SAT VORTAC R-160 to EMBOW INT and hold.
-------------	--

D-ATIS 118.9	SAN ANTONIO APP CON 125.1 307.0	SAN ANTONIO TOWER 119.8 257.8	GND CON 121.9 348.6	CLNC DEL 126.7	CPDLC
------------------------	---	---	-------------------------------	--------------------------	-------



ELEV 809	D	TDZE 809
-----------------	----------	-----------------



TDZ/CL Rwy 13R
REIL Rws 13L, 22 and 31R
HIRL Rws 4-22 and 13R-31L
MIRL Rwy 13L-31R

VGSI and ILS glidepath not coincident (VGSI Angle 3.00/TCH 75).		3100 hdg 128°	EMBOW △
NCLDA I-ANT [11.7] 4000	NUGIT I-ANT [9.2] 3200	ALAMO INT I-ANT [5.8] 2200	
GS 3.00° TCH 58			
← 2.5 NM		← 3.4 NM	← 4.2 NM
CATEGORY	A	B	C
S-ILS 13R	RA 104/12 100 DA 909		

CATEGORY II ILS - SPECIAL AIRCREW & AIRCRAFT CERTIFICATION REQUIRED

SC-3, 28 NOV 2024 to 26 DEC 2024

SC-3, 28 NOV 2024 to 26 DEC 2024