

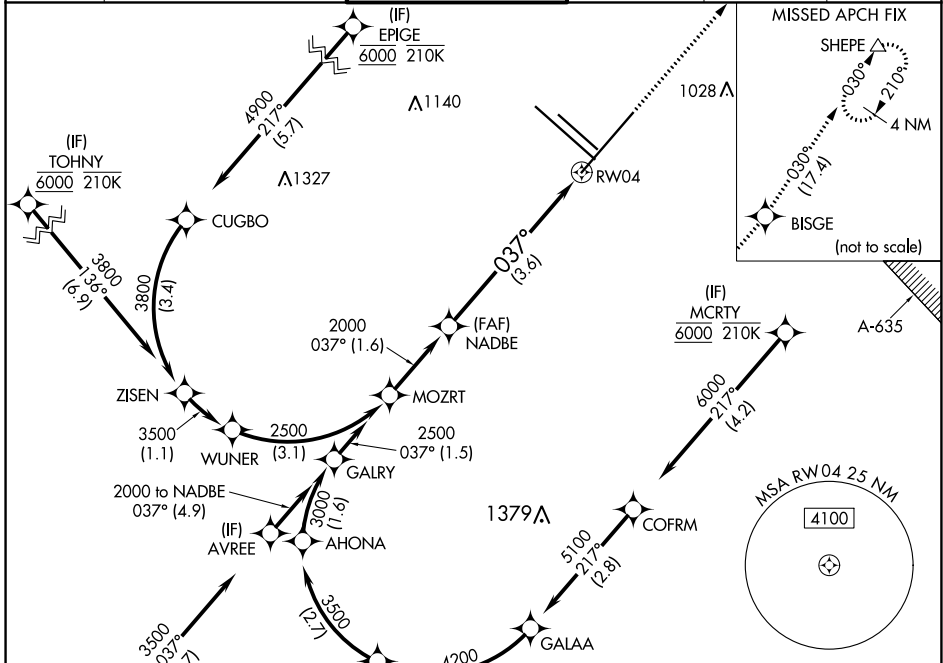
APP CRS <b>037°</b>	Rwy Idg <b>8505</b>
	TDZE <b>786</b>
	Apt Elev <b>809</b>

# RNAV (RNP) Z RWY 4

SAN ANTONIO INTL (SAT)

RNP AR APCH - GPS.	MALS 	MISSED APPROACH: Climb to 3500 direct BISGE and track 030° to SHEPE and hold.
For uncompensated Baro-VNAV systems, procedure NA below -5°C or above 54°C.		

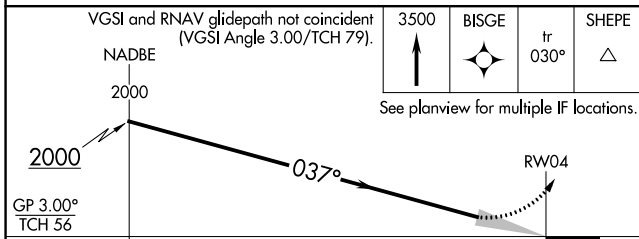
D-ATIS <b>118.9</b>	SAN ANTONIO APP CON <b>125.1 307.0</b>	SAN ANTONIO TOWER <b>119.8 257.8</b>	GND CON <b>121.9 348.6</b>	CLNC DEL <b>126.7</b>	CPDLC
------------------------	---	---	-------------------------------	--------------------------	-------



SC-3, 28 NOV 2024 to 26 DEC 2024

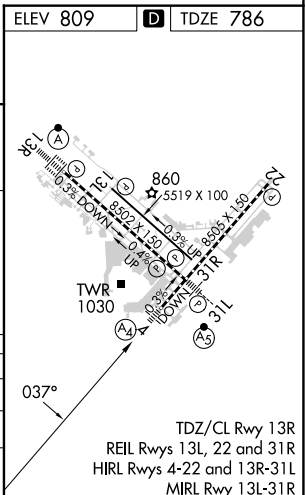
SC-3, 28 NOV 2024 to 26 DEC 2024

ELEV 809	TDZE 786
----------	----------



CATEGORY	A	B	C	D
RNP 0.15 DA		1167/45	381 (400-¾)	
RNP 0.30 DA		1286/60	500 (500-1¼)	

**AUTHORIZATION REQUIRED**



TDZ/CL Rwy 13R  
REIL Rwys 13L, 22 and 31R  
HIRL Rwys 4-22 and 13R-31L  
MIRL Rwy 13L-31R