

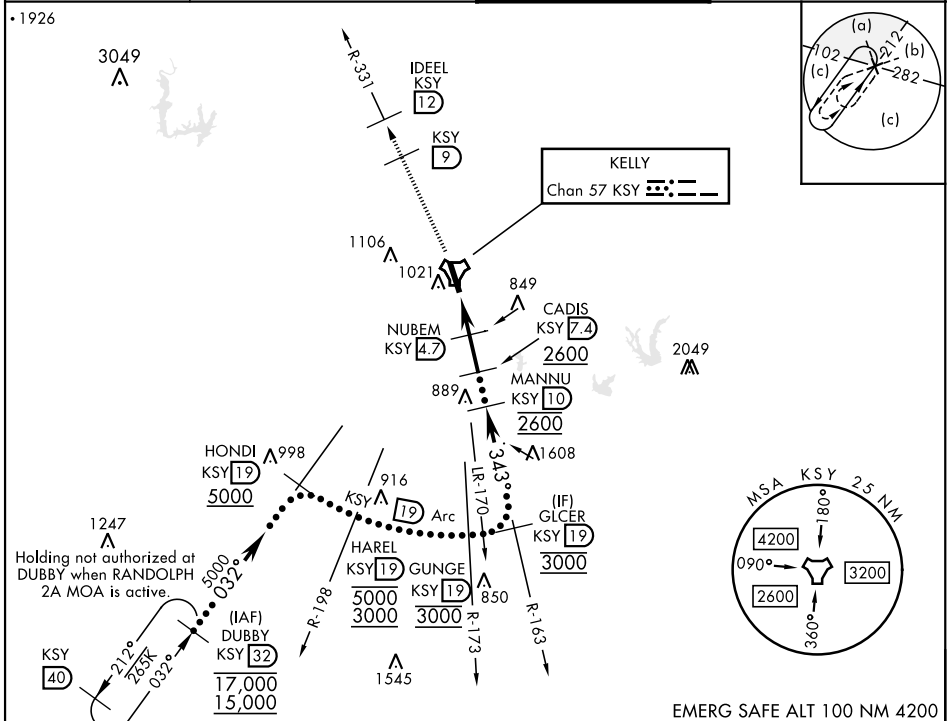
# HI-TACAN Z RWY 34

TACAN KSY Chan 57	APCH CRS 343°	Rwy Idg 11,550 TDZE 660 Arprt Elev 690	[USA F]	KELLY FLD (KSKF)
----------------------	------------------	--	---------	------------------

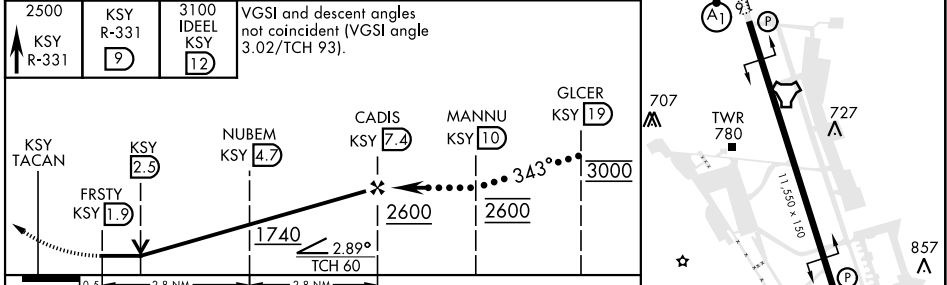
**⚠** \* When ALS inop, increase vis to 1¼ miles.  
 \*\* Circling not authorized E of Rwy 16-34.

ALS-F-1 MISSED APPROACH: Climb to 2500 via KSY TACAN R-331 until 9 DME, cross 9 DME at 2500, then continue climb to 3100 to IDEEL/12 DME. Expect ATC instructions.

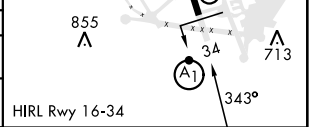
ATIS <b>120.45 273.5</b>	SAN ANTONIO APP CON <b>118.05 353.5</b>	TOWER <b>124.3 322.35</b>	GND CON <b>121.8 289.4</b>
-----------------------------	--	------------------------------	-------------------------------



2500 KSY R-331	KSY R-331 9	3100 IDEEL KSY 12	VGSI and descent angles not coincident (VGSI angle 3.02/TCH 93).
----------------	-------------	-------------------	--



CATEGORY	C	D	E
S-34 *	1100/40	440	(500-¾)
CIRCLING **	1340-1¾ 650 (700-1¾)	1400-2¼ 710 (800-2¼)	1900-3 1210 (1300-3)



# HI-TACAN Z RWY 34

SC-3, 28 NOV 2024 to 26 DEC 2024

SC-3, 28 NOV 2024 to 26 DEC 2024