

SAN ANTONIO, TEXAS

RNAV (GPS) RWY 16

WAAS CH 52296 W16A	APCH CRS 158°	Rwy ldg TDZE Arprt Elev	11,550 690 690
--------------------------	------------------	----------------------------	----------------------

AL-371 (USAF)

KELLY FLD (KSKF)

RNP APCH	ALS-1	MISSED APPROACH: Climb to 1500 then climbing right turn to 3000 direct FITER and hold.
<p>▼ * When ALS inop, increase RVR to 40, vis to 3/4 miles. ** When ALS inop, increase RVR to 60, vis to 1 1/8 miles.</p>		

ATIS 120.45 273.5	SAN ANTONIO APP CON 118.05 353.5	KELLY TOWER 124.3 322.35	GND CON 121.8 289.4
----------------------	-------------------------------------	-----------------------------	------------------------

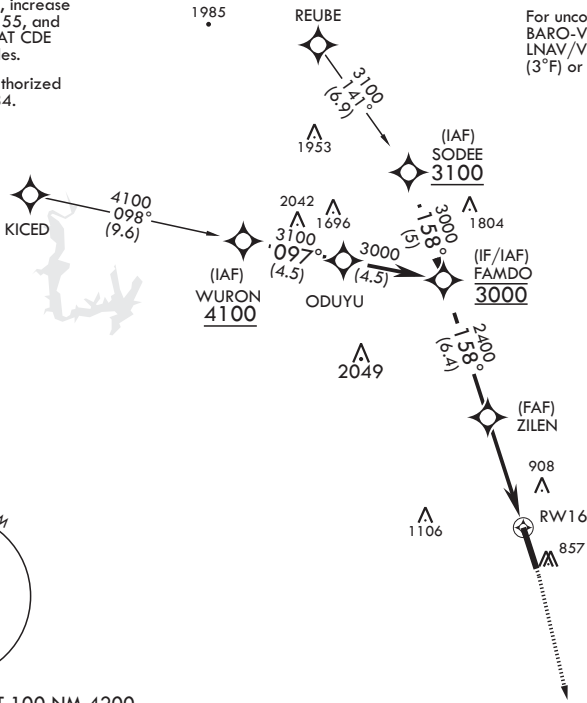
*** When ALS inop, increase CAT AB RVR to 55, and vis to 1 mile; CAT CDE vis to 1 7/8 miles.

**** Circling not authorized E of Rwy 16-34.

1985

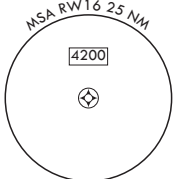
REUBE

For uncompensated BARO-VNAV systems, LNAV/VNAV NA below -16°C (3°F) or above 54°C (129°F).



SC-3, 28 NOV 2024 to 26 DEC 2024

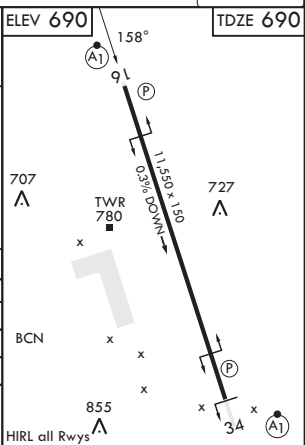
SC-3, 28 NOV 2024 to 26 DEC 2024



EMERG SAFE ALT 100 NM 4200



FAMDO	VGSi and descent angles not coincident (VGSi Angle 3.01/TCH 89).				1500	3000	FITER	ELEV 690	158°	TDZE 690
3000	ZILEN				1.8 NM to RWY 16	RWY 16		707	727	
GP 3.00°	2400				5.1 NM			TWR 780		
TCH 57								BCN		
CATEGORY	A	B	C	D	E					
LPV DA*	890/24		200	(200-½)						
LNAV/VNAV DA**	1080/35		390	(400-¾)						
LNAV MDA***	1360/24 670 (700-½)		1360-1½	670	(700-1½)					
CIRCLING****	1360-1 670 (700-1)		1360-1½ (700-1½)	1400-2¼ (800-2¼)	1900-3 (1300-3)					



SAN ANTONIO, TEXAS
Amdt 2 23FEB23

29°23'N - 98°35'W

KELLY FLD (KSKF)

RNAV (GPS) RWY 16