

TACAN Y RWY 34

TACAN KSY Chan 57	APCH CRS 343°	Rwy Ldg 11,550 TDZE 660 Arprt Elev 690
----------------------	------------------	--

[USAF]

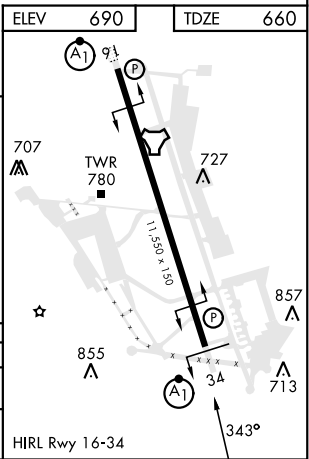
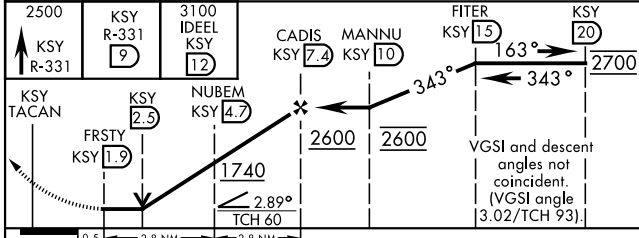
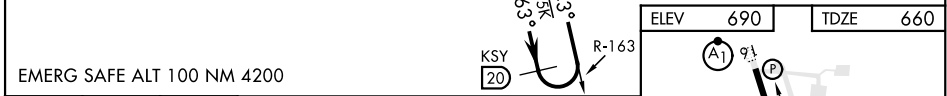
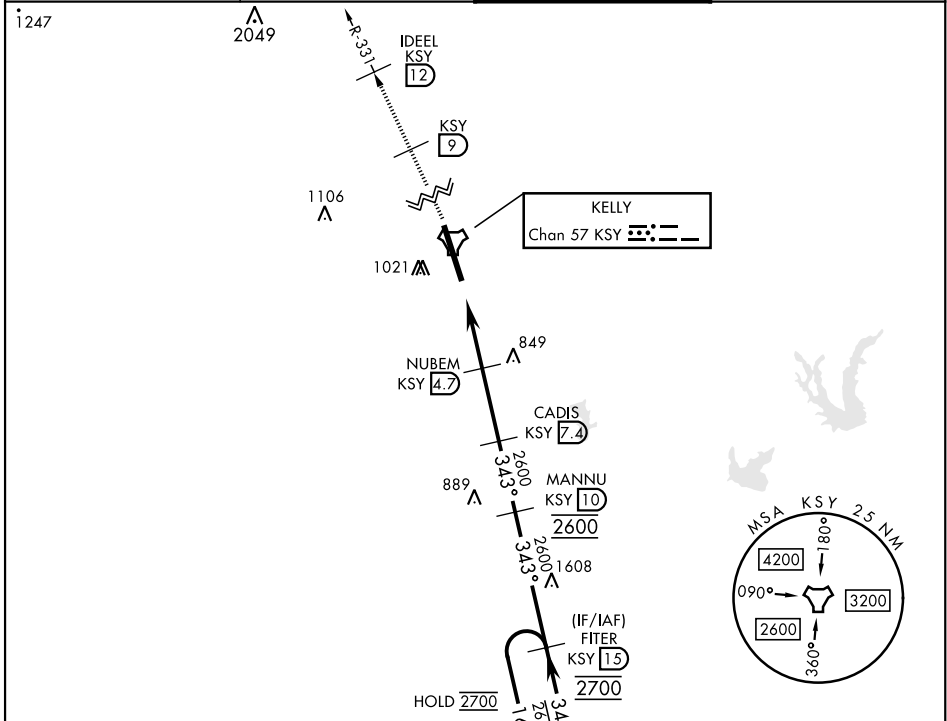
KELLY FLD (KSKF)

▼ * When ALS inop, increase CAT AB RVR to 55 vis to 1 mile, CAT CDE vis to 1¼ miles.
 ** Circling not authorized E of Rwy 16-34.



MISSED APPROACH: Climb to 2500 via KSY TACAN R-331 until 9 DME, cross 9 DME at 2500, then continue climb to 3100 to IDEEL/12 DME. Expect ATC instructions.

ATIS 120.45 273.5	SAN ANTONIO APP CON 118.05 353.5	TOWER 124.3 322.35	GND CON 121.8 289.4
-----------------------------	--	------------------------------	-------------------------------



EMERG SAFE ALT 100 NM 4200

2500 KSY R-331 9	3100 IDEEL KSY 12	CADIS KSY 7.4	MANNU KSY 10	FITER KSY 15	KSY 20
KSY TACAN		FRSTY KSY 1.9	NUBEM KSY 4.7	2600	2600
KSY R-331		2.89°	TCH 60	VGSI and descent angles not coincident. (VGSI angle 3.02/TCH 93)	

CATEGORY	A	B	C	D	E
S-34 *	1100/24	440 (500-½)	1100/40	440	(500-¾)
CIRCLING **	1200-1 510 (600-1)	1280-1 590 (600-1)	1340-1¼ 650 (700-1¾)	1400-2¼ 710 (800-2¼)	1900-3 1210 (1300-3)

TACAN Y RWY 34

SC-3, 28 NOV 2024 to 26 DEC 2024

SC-3, 28 NOV 2024 to 26 DEC 2024