

BARET FIVE ARRIVAL
(BARET, BARET5) 08LAN15

SOCAL APP CON
124.35 279.625
KNZY ATIS*
317.8
SAN D-ATIS
134.8



NOTE: Turbojet aircraft only.
NOTE: RADAR required.
NOTE: When SAN arrivals are using Rwy 9, aircraft can expect to depart and re-enter the TCA southwest of PGY VORTAC.

TURBOJET VERTICAL NAVIGATION

PLANNING INFORMATION

TNP, EED and PKE transitions
expect FL240 at SALTN
expect 12000 at CARUL

OCEANSIDE
115.3 OCN
Chan 100

LOCALIZER
I-SAN
111.55
Chan 52 (Y)

MISSION BAY
117.8 MZB
Chan 125

LOCALIZER
I-UBR
110.9
Chan 46

JULIAN
114.0 JUL
Chan 87

TWENTYNINE PALMS
114.2 TNP
Chan 89

NEEDLES
115.2 EED
Chan 99

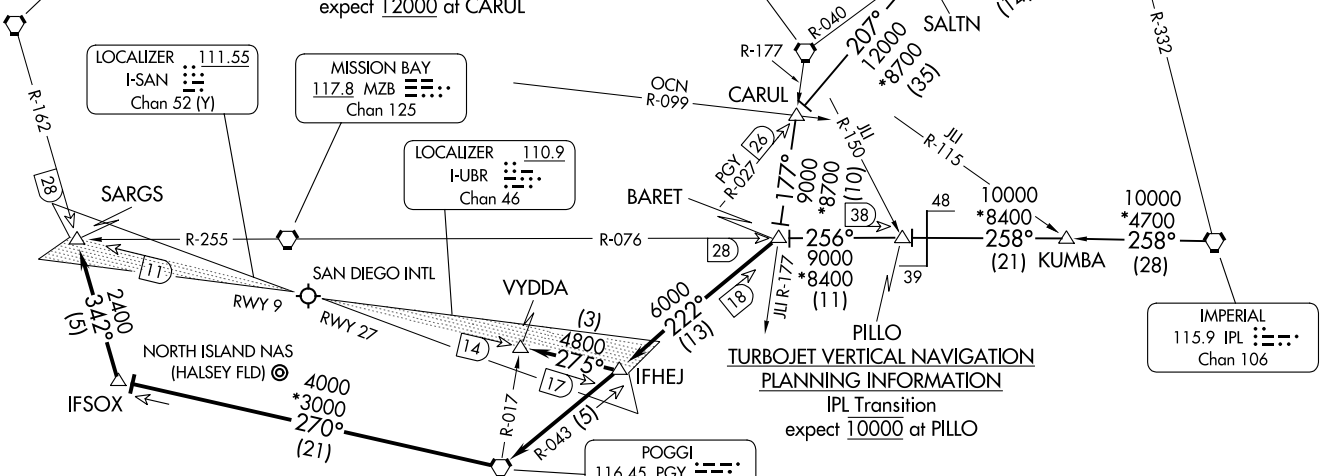
THERMAL
116.2 TRM
Chan 109

PARKER
117.9 PKE
Chan 126

IMPERIAL
115.9 IPL
Chan 106

POGGI
116.45 PGY
Chan 111 (Y)

SAN DIEGO, CALIFORNIA



(CONTINUED ON FOLLOWING PAGE)

NOTE: Chart not to scale.

(BARET, BARET5) 23334
AL-373 (FAA)

AL-373 (FAA)

SAN DIEGO, CALIFORNIA

ARRIVAL ROUTE DESCRIPTION

IMPERIAL TRANSITION (IPL.BARET5): From over IPL VORTAC on IPL R-258 and MZB R-076 to BARET INT. Thence

NEEDLES TRANSITION (EED.BARET5): From over EED VORTAC on EED R-208 to SHADI INT, then on JLI R-040 to SALTN INT, then on PGY R-027 to CARUL INT, then on JLI R-177 to BARET INT. Thence

PARKER TRANSITION (PKE.BARET5): From over PKE VORTAC on PKE R-227 to SHADI INT, then on JLI R-040 to SALTN INT, then on PGY R-027 to CARUL INT, then on JLI R-177 to BARET INT. Thence

TWENTYNINE PALMS TRANSITION (TNP.BARET5): From over TNP VORTAC on TNP R-179 to MOMAR INT, then on JLI R-040 to SALTN INT, then on PGY R-027 to CARUL INT, then on JLI R-177 to BARET INT. Thence

. . . .LANDING SAN RWY 9: From BARET INT on PGY R-043 to PGY VORTAC, then on PGY R-270 to IFSOX, then on OCN R-162 to SARGS INT.

Expect ILS Rwy 9 approach to SAN or LOC/DME-B to NZY.

. . . .LANDING SAN RWY 27 and NZY: From BARET INT on PGY R-043 to IFHEJ, then on I-UBR localizer to VYDDA INT. Expect LOC Rwy 27 approach to SAN or LOC/DME-A to NZY.

LOST COMMUNICATIONS: In the event of lost communications, North Island arrivals shall execute the TACAN Rwy 29 or TACAN Rwy 36.

SW-3, 28 NOV 2024 to 26 DEC 2024

SW-3, 28 NOV 2024 to 26 DEC 2024