

CLSSY ONE DEPARTURE (RNAV)

AL-373 (FAA)

SAN DIEGO INTL (SAN)
SAN DIEGO, CALIFORNIA

SW-3, 28 NOV 2024 to 26 DEC 2024

DEPARTURE ROUTE DESCRIPTION

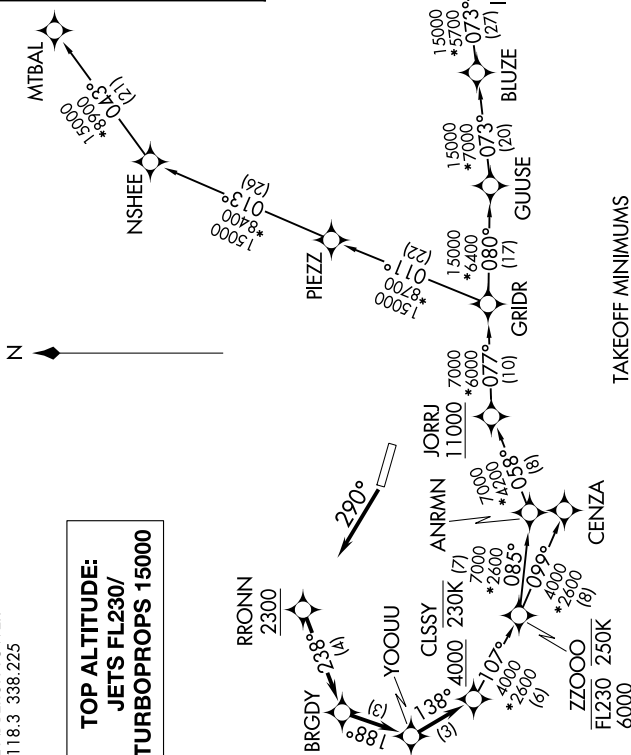
TAKEOFF RUNWAY 27: Climb on heading 290° or as assigned by ATC, for RADAR vectors to cross RRONN at or above 2300, then on depicted route to cross CLSSY at or above 4000 and at or below 230K, then on transition. Jets maintain FL230, turbo-props maintain 15000, expect filed altitude 10 minutes after departure.

CENZA TRANSITION (CLSSY1 .CENZA)
GILA BEND TRANSITION (CLSSY1 .GBN)
HOGGZ TRANSITION (CLSSY1 .HOGGZ)
MTBAL TRANSITION (CLSSY1 .MTBAL)
TGOLD TRANSITION (CLSSY1 .TGOLD)

RNAV 1 - DME/DME/IRU or GPS.
 RADAR required.
 For non-GPS equipped aircraft using TGOLD or GBN transitions, BLH DME must be operational.

SOCAL DEP CON
119.6 363.1
D-ATIS
134.8
CLINX DEL
125.9
GND CON
123.9
LINDBERGH TOWER
118.3 338.225

**TOP ALTITUDE:
 JETS FL230/
 TURBOPROPS 15000**



TAKEOFF MINIMUMS
 Rwy 27: Standard with minimum climb of 370'/NM to 4600.

NOTE: Jets/turbo-props only.
 NOTE: HOGGZ Transition for PHX terminal area arrivals only.

NOTE: Chart not to scale.

CLSSY ONE DEPARTURE (RNAV)

(CLSSY1 .CLSSY) 31OCT24

SAN DIEGO, CALIFORNIA
SAN DIEGO INTL (SAN)

SW-3, 28 NOV 2024 to 26 DEC 2024