


|   |                        |   |
|---|------------------------|---|
| LOC/DME I-SAN<br><b>111.55</b><br>Chan 52 (Y) | APP CRS<br><b>095°</b> | Rwy Idg <b>7280</b><br>TDZE <b>17</b><br>Apt Elev <b>17</b> |
|---|------------------------|---|

# ILS Z or LOC Z RWY 9

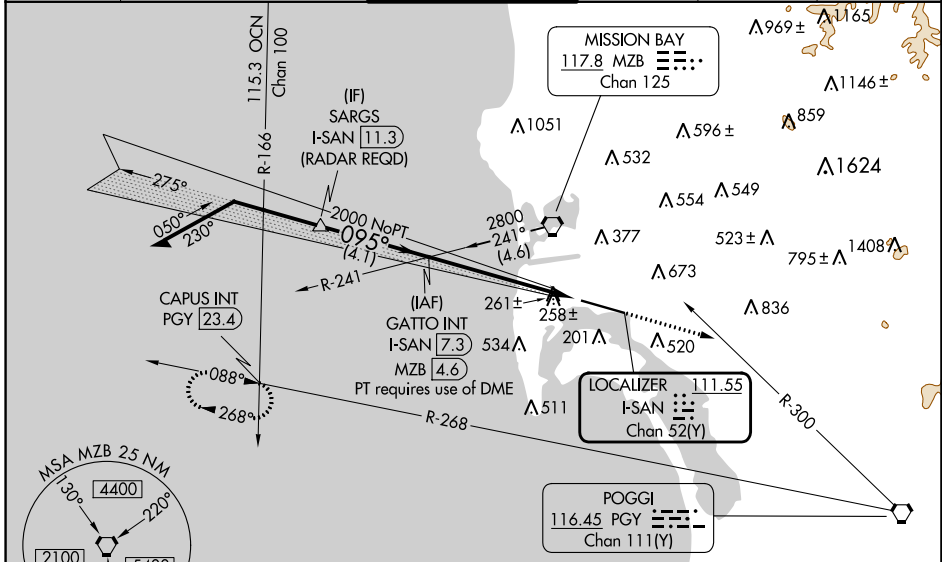
SAN DIEGO INTL (SAN)

**⚠** Circling NA north of Rwy 9-27. Autopilot coupled approach NA below 530. When Circling to Rwy 27 at night, operational VGSI required, remain on or above VGSI glidepath until threshold. For inop ALS, increase S-LOC Cat A/B visibility to RVR 5500, and Cat C/D to 1 ½ SM. LOC only: Rwy 9 helicopter visibility reduction below RVR 4000 NA.

**MALSR**  


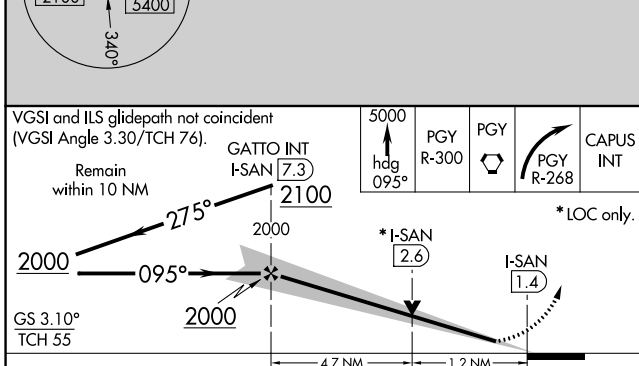
**MISSED APPROACH:** Climb to 5000 on heading 095° and on PGY VORTAC R-300 to PGY VORTAC, then right turn on PGY VORTAC R-268 to CAPUS INT/23.4 DME and hold.  
#Missed approach requires minimum climb of 280 feet per NM to 3800; if unable to meet climb gradient, see ILS Y or LOC Y RWY 9.

|                        |  |   |                         |                          |       |
|------------------------|--|---|-------------------------|--------------------------|-------|
| D-ATIS<br><b>134.8</b> | SOCAL APP CON<br><b>119.6 363.1 (WEST)</b><br><b>124.35 279.625 (EAST)</b> | LINDBERGH TOWER<br><b>118.3 338.225</b> | GND CON<br><b>123.9</b> | CLNC DEL<br><b>125.9</b> | CPDLC |
|------------------------|--|---|-------------------------|--------------------------|-------|



SW-3, 28 NOV 2024 to 26 DEC 2024

SW-3, 28 NOV 2024 to 26 DEC 2024



| ELEV 17                               | <b>D</b> TDZE 17   |       |      |      |      |     |     |         |      |      |      |      |      |
|---------------------------------------|--|-------|------|------|------|-----|-----|---------|------|------|------|------|------|
| TDZ/CL Rwys 9 and 27<br>HIRL Rwy 9-27 |  |       |      |      |      |     |     |         |      |      |      |      |      |
| FAF to MAP 5.9 NM                     |  |       |      |      |      |     |     |         |      |      |      |      |      |
| <b>C</b> CIRCLING                     | <table border="1"> <tr> <th>Knots</th> <td>60</td> <td>90</td> <td>120</td> <td>150</td> <td>180</td> </tr> <tr> <th>Min:Sec</th> <td>5:54</td> <td>3:56</td> <td>2:57</td> <td>2:22</td> <td>1:58</td> </tr> </table> | Knots | 60   | 90   | 120  | 150 | 180 | Min:Sec | 5:54 | 3:56 | 2:57 | 2:22 | 1:58 |
| Knots                                 | 60   | 90    | 120  | 150  | 180  |     |     |         |      |      |      |      |      |
| Min:Sec                               | 5:54   | 3:56  | 2:57 | 2:22 | 1:58 |     |     |         |      |      |      |      |      |